

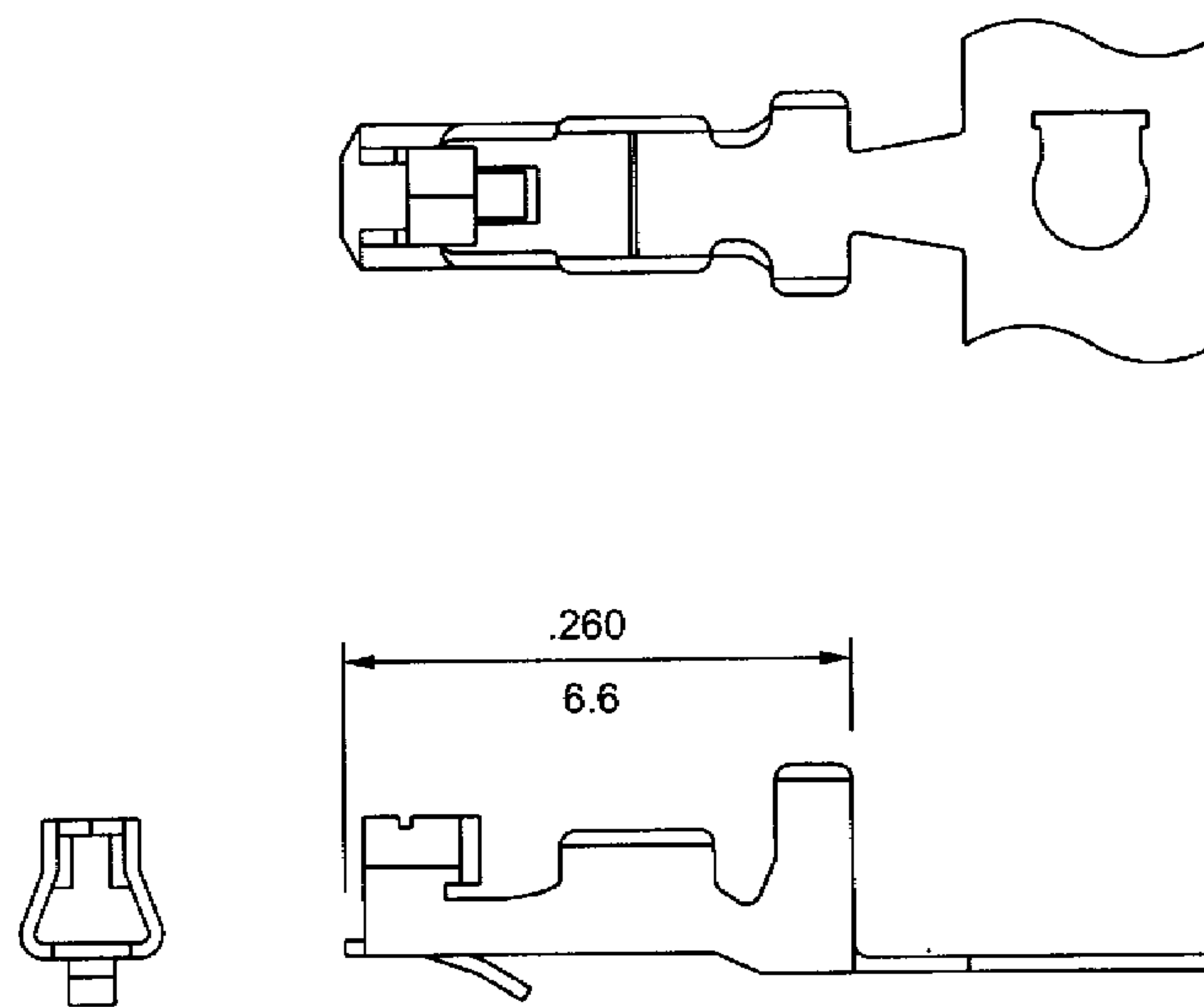
# .098" (2.5mm) Center Wire-to-Board System

## Specifications:

- Current rating: 2.5A AC, DC
- Voltage rating: 250V AC, DC
- Dielectric withstanding voltage: 800V AC/minute
- Recommended P.C.B. thickness: .063" (1.6mm)
- Insulation resistance: 1000M $\Omega$  min.
- Contact resistance: 20m $\Omega$  max.
- Ambient temperature range: -25 °C ~ 85 °C (including temperature rise)

## 25005T Series Crimp Terminal

- Material: Phosphor bronze
- Finished: Tin-plated
- Used in 25005H-N series housing
- Wire range: AWG #22 ~ #28
- Thickness: 0.2mm

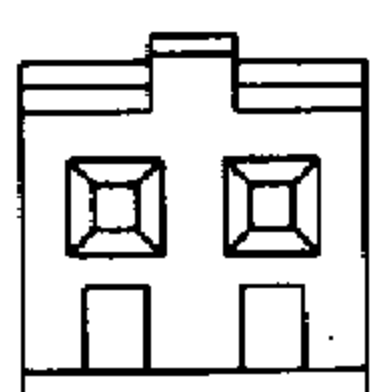


inches  
mm

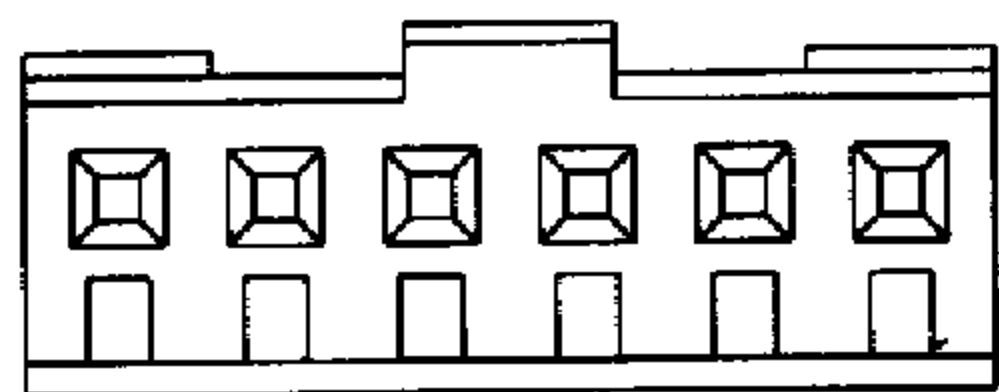
## 25005H-N Series Receptacle Housing

- 2 ~ 15 circuits available
- Material: UL 94V-0 nylon 66
- Standard color: Orange
- Accepts 25005T terminal

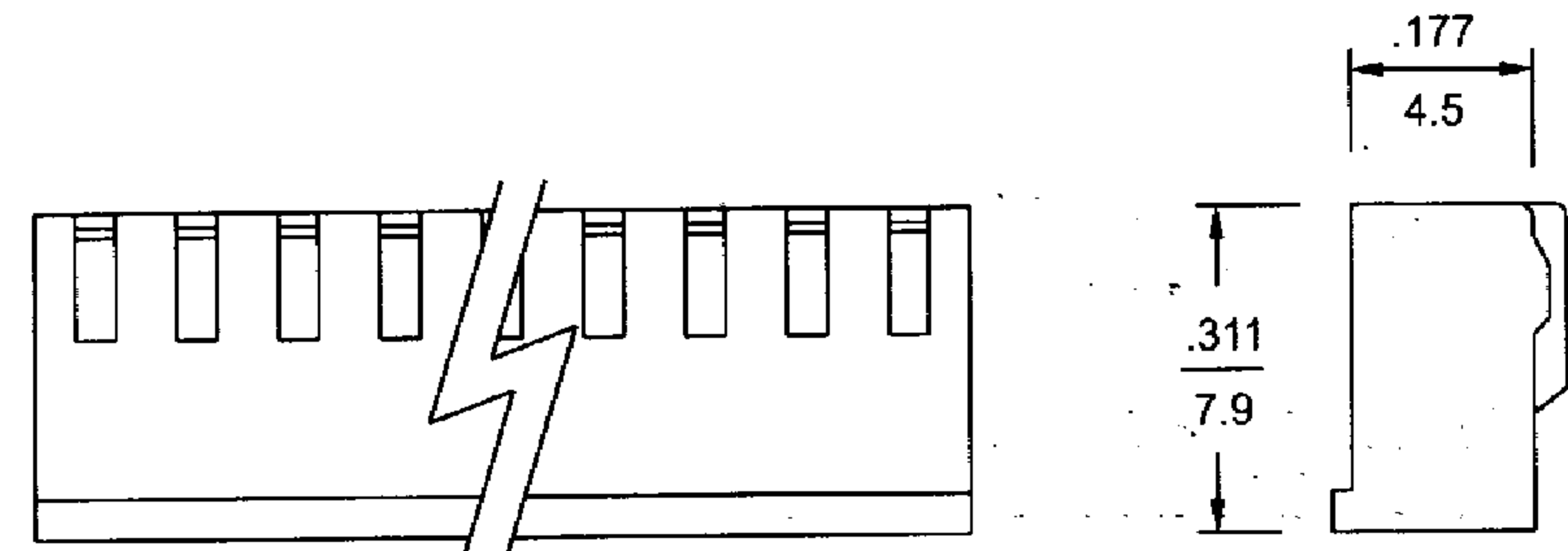
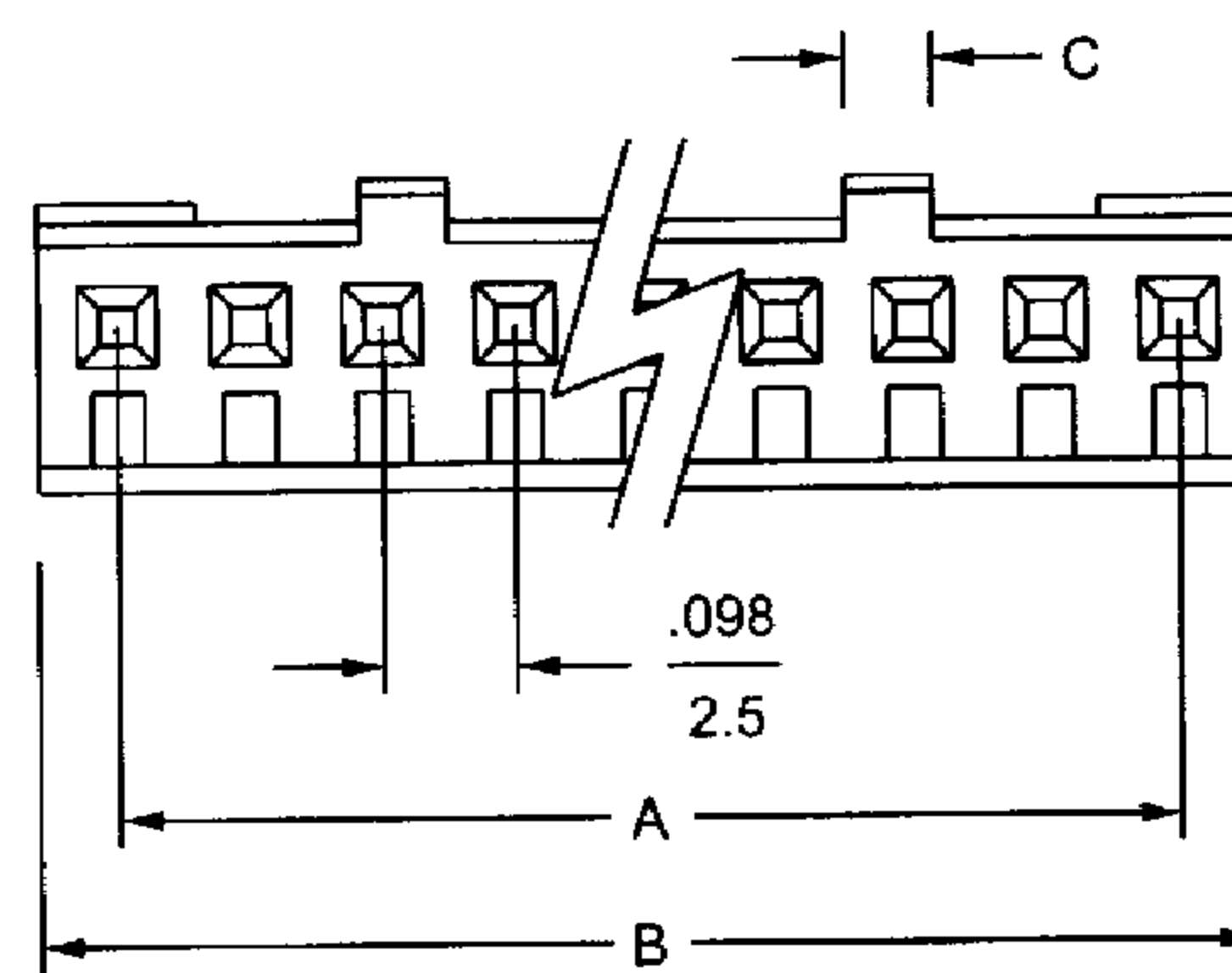
2, 3



4 ~ 6



7 ~ 15



inches  
mm

### Dimensional Information - in ( mm )

Circuits	Dim. A	Dim. B	Dim. C	Circuits	Dim. A	Dim. B	Dim. C	Circuits	Dim. A	Dim. B	Dim. C
2	0.098 ( 2.5)	0.217 ( 5.5)	0.053 (1.35)	7	0.591 (15.0)	0.709 (18.0)	0.065 (1.65)	12	1.083 (27.5)	1.201 (30.5)	0.065 (1.65)
3	0.197 ( 5.0)	0.315 ( 8.0)	0.075 (1.90)	8	0.689 (17.5)	0.807 (20.5)	0.065 (1.65)	13	1.181 (30.0)	1.300 (33.0)	0.065 (1.65)
4	0.295 ( 7.5)	0.413 (10.5)	0.093 (2.35)	9	0.787 (20.0)	0.906 (23.0)	0.065 (1.65)	14	1.280 (32.5)	1.398 (35.5)	0.065 (1.65)
5	0.394 (10.0)	0.512 (13.0)	0.114 (2.90)	10	0.886 (22.5)	1.004 (25.5)	0.065 (1.65)	15	1.378 (35.0)	1.496 (38.0)	0.065 (1.65)
6	0.492 (12.5)	0.610 (15.5)	0.132 (3.35)	11	0.984 (25.0)	1.102 (28.0)	0.065 (1.65)				