

# 387 & 388

## D-SUB Dual Port Connector

### Technical data :

INSULATOR : PBT &30% GLASS FIBER THERMOPLASTIC,UL 94V-0

CONTACTS : BRASS OR PHOSPHOR BRONZE

SHELL : STEEL,TIN PLATED,DIMPLES ON PLUG ONLY

GROUNDING BRACKET : BRASS, TIN PLATED

RIVETED INSERT : BRASS,NICKEL PLATED

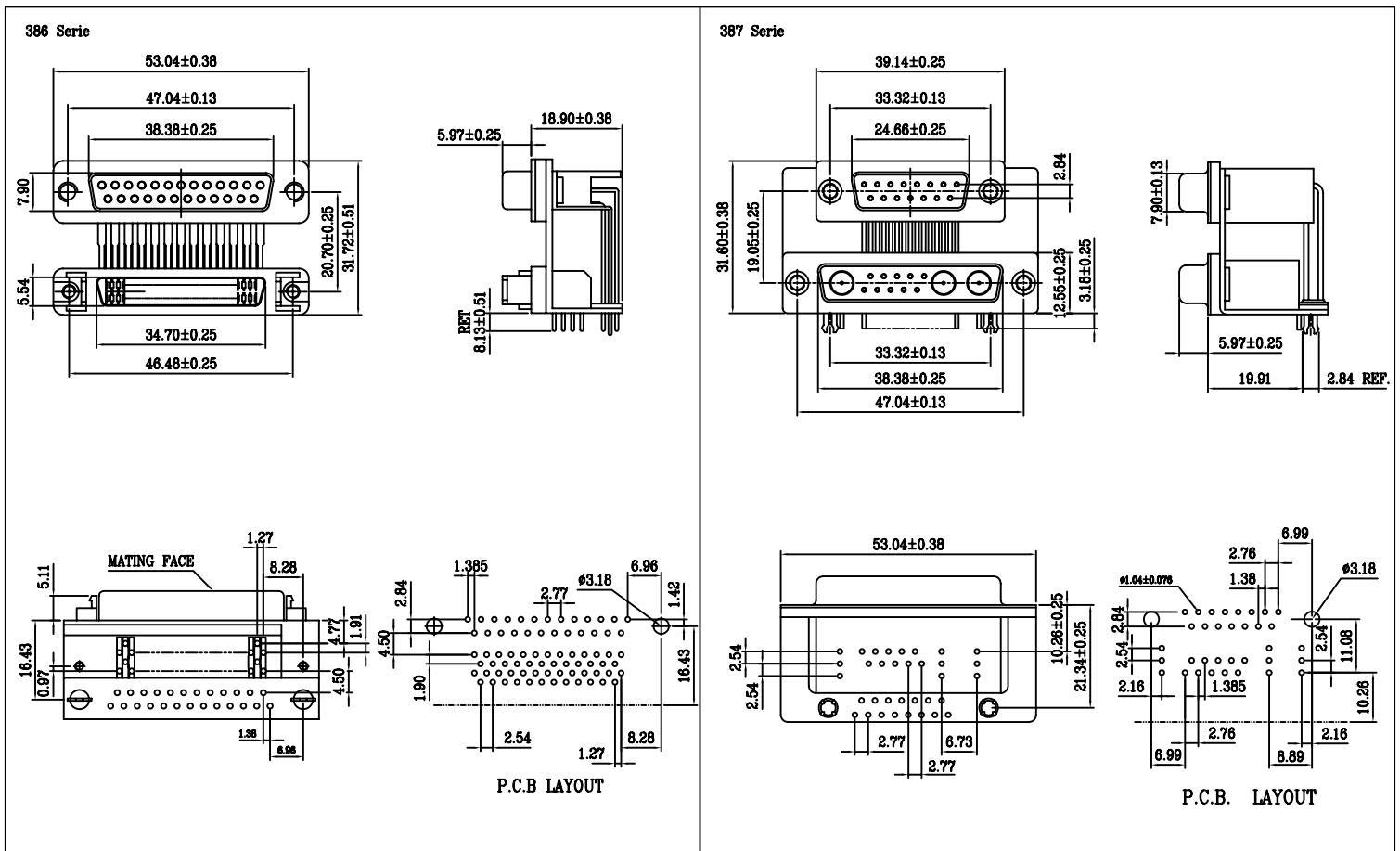
CONTACT CURRENT RATING : 5.0 AMPS

CONTACT RESISTANCE : 30 mOHM MAX.

DIELECTRIC WITHSTANDING VOLTAGE : 500 V AC MIN.

INSULATION RESISTANCE : 1000 MOHM MIN.

TEMPERATURE RATING : -55°C~+105°C



### How to order Serie 387 & 388

3 8 7 -    
Serie-Nr. Connector Type

3 8 8 -    
Serie-Nr. Connector Type

Connector Type	Code
25M-50F	10
25F-50F	20

Connector Type	Code
15M-13W3F	10
15F-13W3F	20

W.E.