

High-Density Edge Card Edge Connector 1.27mm 3 Slot

Technical data :

Body : High temperature thermoplastic, UL 94v-0

Contacts : Copper alloy

Contact Plating : Gold plating over nickel on contact area
Tin/Lead plating on terminal

Contact Normal Force : 75 Grams min.

Insertion Force : 7oz. max. per mated pair

Contact Retention : 1 oz. min. per mated pair

Mating Durability : 100 cycles

Operation Voltage : 125 VAC max.

Current Rating : 1 Ampere per contact

Contact Resistance : 30 Milliohms max. initial ,

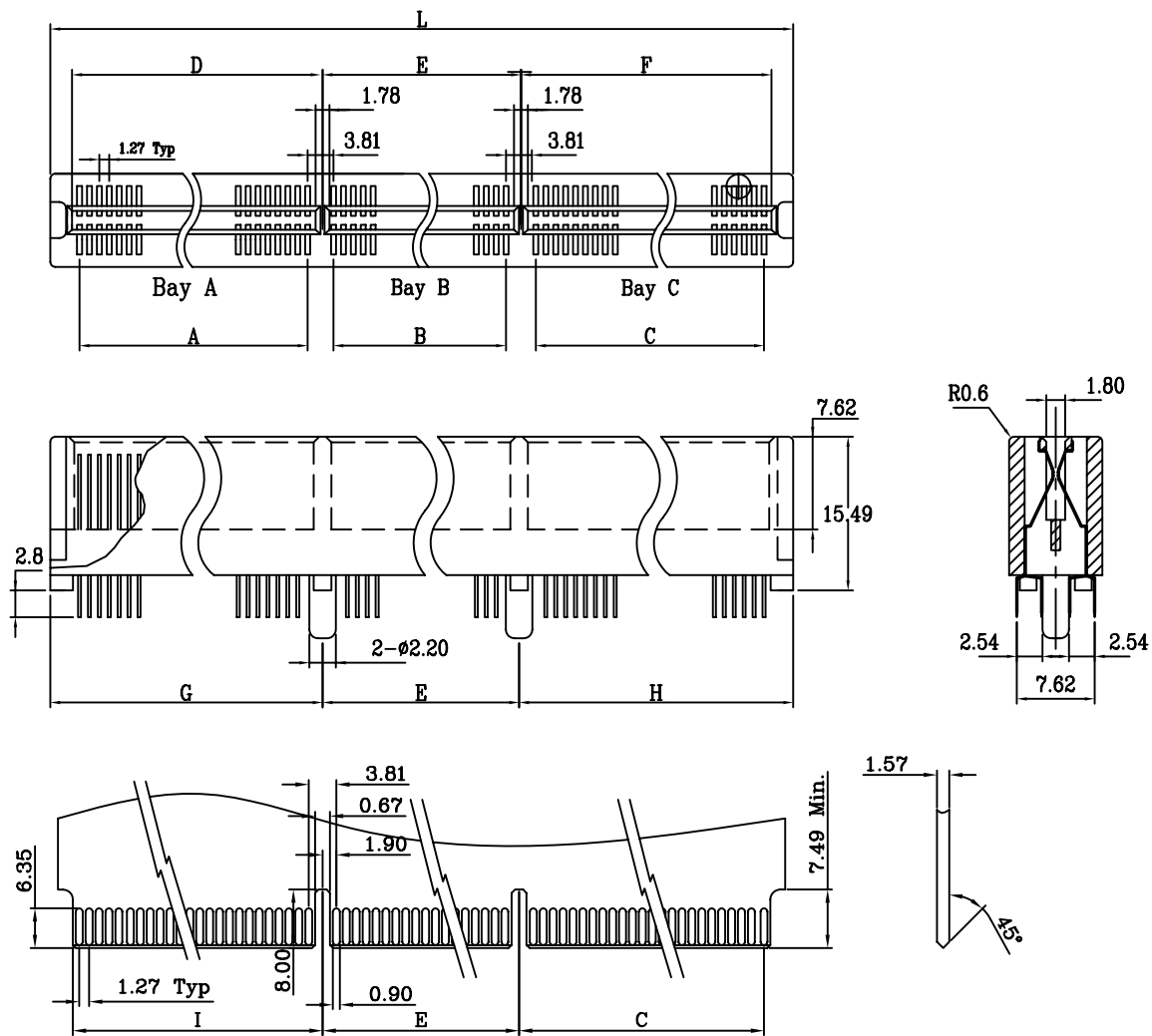
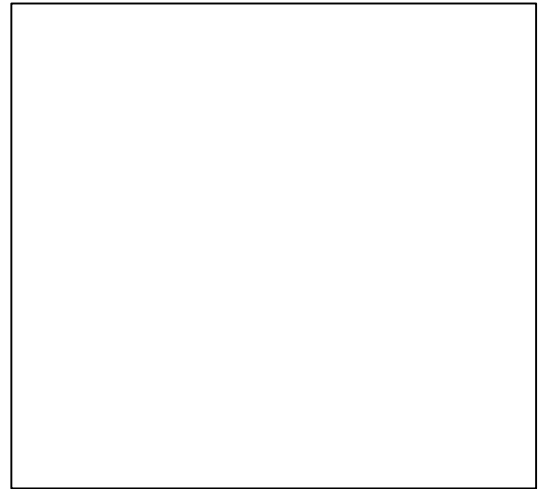
10 Milliohms max. increase through testing

Insulation Resistance : 1000 Megohms min.

Dielectric Withstanding Voltage : 500 VAC

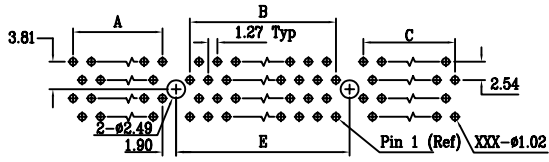
Capacitance : 2 pf max.

Capacitance : 2 pf max.

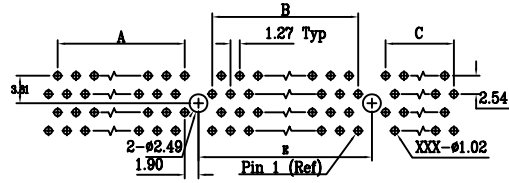


Daughter Card Requirements

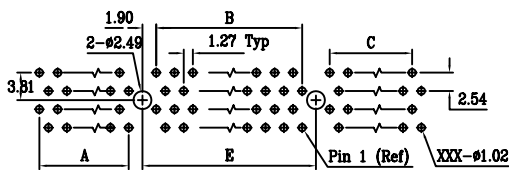
High-Density Edge Card Edge Connector 1.27mm 3 Slot



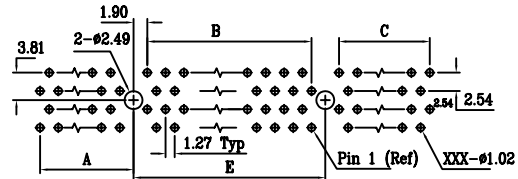
P.C.B. Layout 132,140,184a Pins
184B,212,240B Pins



P.C.B. Layout 194,202 Pins

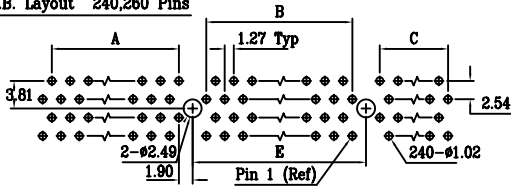


P.C.B. Layout 184B,212,220B Pins



P.C.B. Layout 116 Pins

P.C.B. Layout 240,260 Pins



How to order 3 1 2 - -

Serie-Nr.

Nr.of Contact

Plating

Nr.of contact	Contact Per Row	Bay A	Bay B	Bay C	Dimensions(mm)													Code
					A	B	C	D	E	F	G	H	I	L	Rem			
116	58/116	11/22	32/64	15/30	12.70	39.37	17.78	15.875	43.18	20.955	18.29	23.37	15.49	84.84		116		
132	66/132	11/22	45/90	10/20	12.70	55.88	11.43	15.875	59.89	14.605	18.29	17.20	15.49	95.00	MAC	132		
140	70/140	11/22	45/90	14/28	12.70	55.88	16.51	15.875	59.89	19.685	18.29	22.10	15.49	100.08		140		
184	92/184	11/22	49/98	32/64	12.70	60.96	39.37	15.875	64.77	42.545	18.29	44.96	15.49	128.02	PCI 3.3V	184A		
184	92/184	49/98	11/22	32/64	60.96	12.70	39.37	64.135	16.51	42.545	66.55	44.96	63.75	128.02	PCI 5.0V	184B		
184	92/184	42/84	40/80	10/20	52.07	49.53	11.43	52.84	53.34	14.605	57.66	17.02	54.86	128.02		184C		
194	97/194	42/84	45/90	10/20	52.07	55.88	11.43	52.84	59.89	14.605	57.66	17.02	54.86	134.37	MAC	194		
202	101/202	42/84	49/98	10/20	52.07	60.96	11.43	52.84	64.77	14.605	57.66	17.02	54.86	139.45		202		
212	106/212	11/22	45/90	50/100	12.70	55.88	62.23	52.84	59.89	65.405	18.29	67.82	15.49	145.80		212-1		
212	106/212	40/80	40/80	26/52	49.53	49.53	31.75	52.84	53.34	34.925	55.12	88.90	52.32	145.80		212-2		
220	110/220	42/84	40/80	28/56	52.07	49.53	34.29	52.84	53.34	37.485	57.66	39.88	54.86	150.88		220		
240	120/240	42/84	45/90	33/66	52.07	55.88	40.64	52.84	59.89	43.815	57.66	46.23	54.86	163.58		240A		
240	120/240	11/22	45/90	64/128	12.70	55.88	80.01	52.84	59.89	83.185	18.29	85.60	15.49	163.58		240B		
260	130/260	42/84	45/90	43/86	52.07	55.88	53.34	52.84	59.89	58.515	57.66	58.93	54.86	176.28		260		
300	130/260	49/98	42/84	59/118	60.96	52.07	73.66	52.84	59.89	78.835	66.55	79.25	63.75	205.49		300		

Plating option	Code
Selective gold flash	60