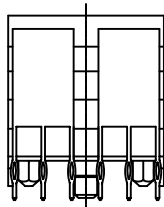
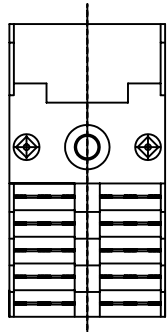
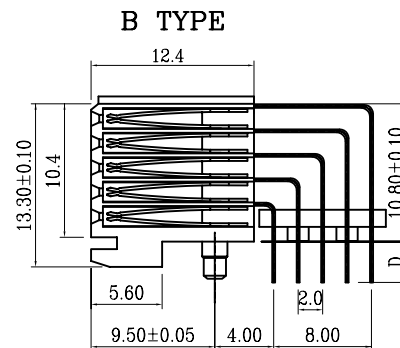
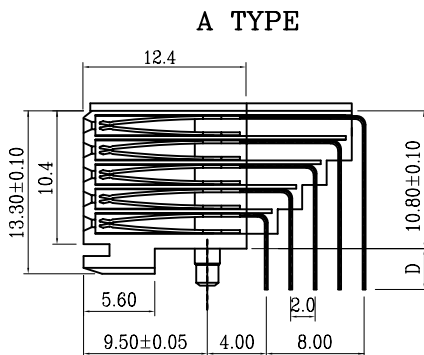
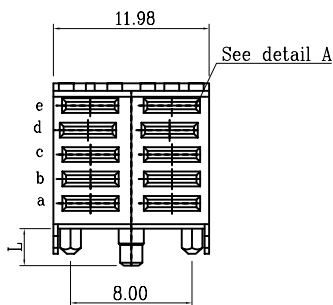


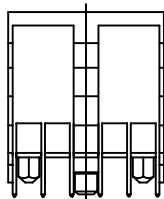
Female power right angle press-fit, wide body - 5 ROWS

Features

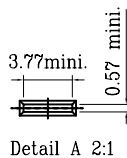
- Module of 12mm width interchangeable with signal 24 pins connector on the same footprint
- Stackable end to end without contact loss with other signal or power modules
- Modular flexible system
- Tails fit into  $\phi 0.7$  mm nominal PTH size
- Fixation pegs can be either hot riveting pegs or forced fit pegs
- Polarization by design
- Material: LCP(SMT compatible)
- Standard plating: gold over nickel
- Current rating: 3A
- Please refer to page 1 for complete parts number coding



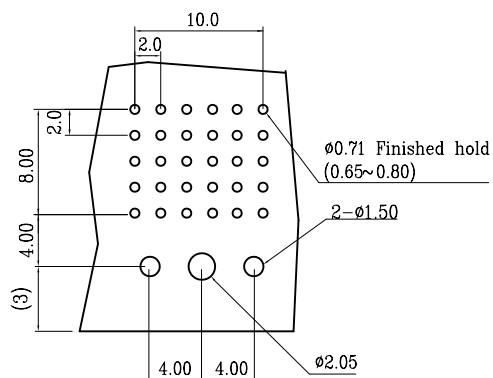
Press fit



Solder



Detail A 2:1



P.C.B LAYOUT

PCB thickness	Dim.D	Dim.L	
1.6	2.90±0.3	5.20	Hot riveting peg
2.4	3.60±0.3	6.00	
1.6	2.90±0.3	3.00	Forced fit peg
2.4	3.60±0.3	3.00	

Ordering Information

No. of contact(90° power)			10-pins		
Termination			A Type		B Type
			Press fit	Solder	Solder
Termination Length	Forced Fit Peg	Plating	Parts Number	Parts Number	Parts Number
2.9mm	3.0mm	30u"	1688-P-10F30R01AP1A	1688-S-10F30R01AP1A	1688-S-10F30R01AP1B
3.6mm	3.0mm	30u"	1688-P-10F30R01BP1A	1688-S-10F30R01BP1A	1688-S-10F30R01BP1B