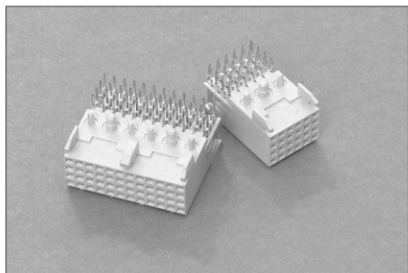
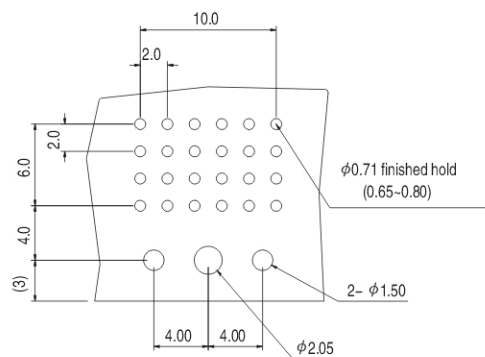
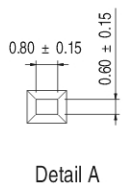
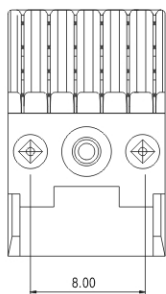
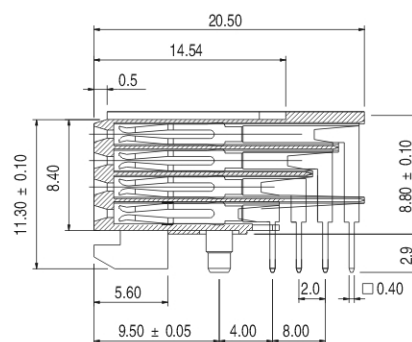
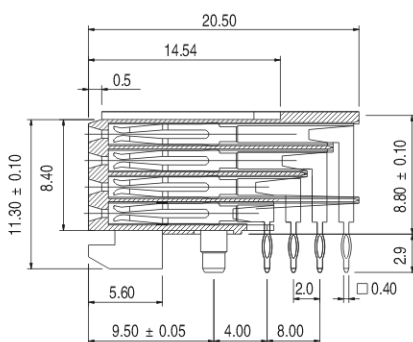
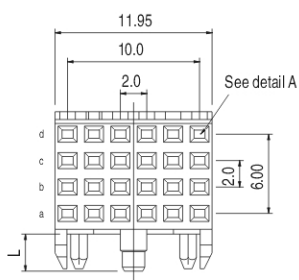


## Female signal right angle Solder & press-fit, wide body – 4 ROWS



### Features

- Grid at 2 mm spacing(0.079inch)
- Tails fit into  $\phi 0.7\text{mm}$  nominal hole size
- Stackable end to end without contact loss together with other moduies
- Modular flexible system
- Fixation pegs in each 12 mm module
- Recommended fixing principle s provided with forced fit pegs  
3.2 mm PCB thickness cannot be accomodated
- Polarzation by design
- Material: LCP(SMT compatible)
- Standard plating:gold over nickel
- Please refer to page 1 for complete parts number coding



### Ordering Information

No. of contact			24		48		96		192	
Termination Type			Solder	Press Fit	Solder	Press Fit	Solder	Press Fit	Solder	Press Fit
Forced Fit Peg	Termination Length	Plating	Parts Number							
3.0mm	2.9mm	10u"	1688-S-24 F10R01AP1	1688-P-24 F10R01AP1	1688-S-48 F10R01AP1	1688-P-48 F10R01AP1	1688-S-96 F10R01AP1	1688-P-96 F10R01AP1	1688-S-192 F10R01AP1	1688-P-192 F10R01AP1
Hot Riveting			24		48		96		192	
5.2mm	2.9mm	10u"	1688-S-24 F10R01AR1		1688-S-48 F10R01AR1		1688-S-96 F10R01AR1		1688-S-192 F10R01AR1	