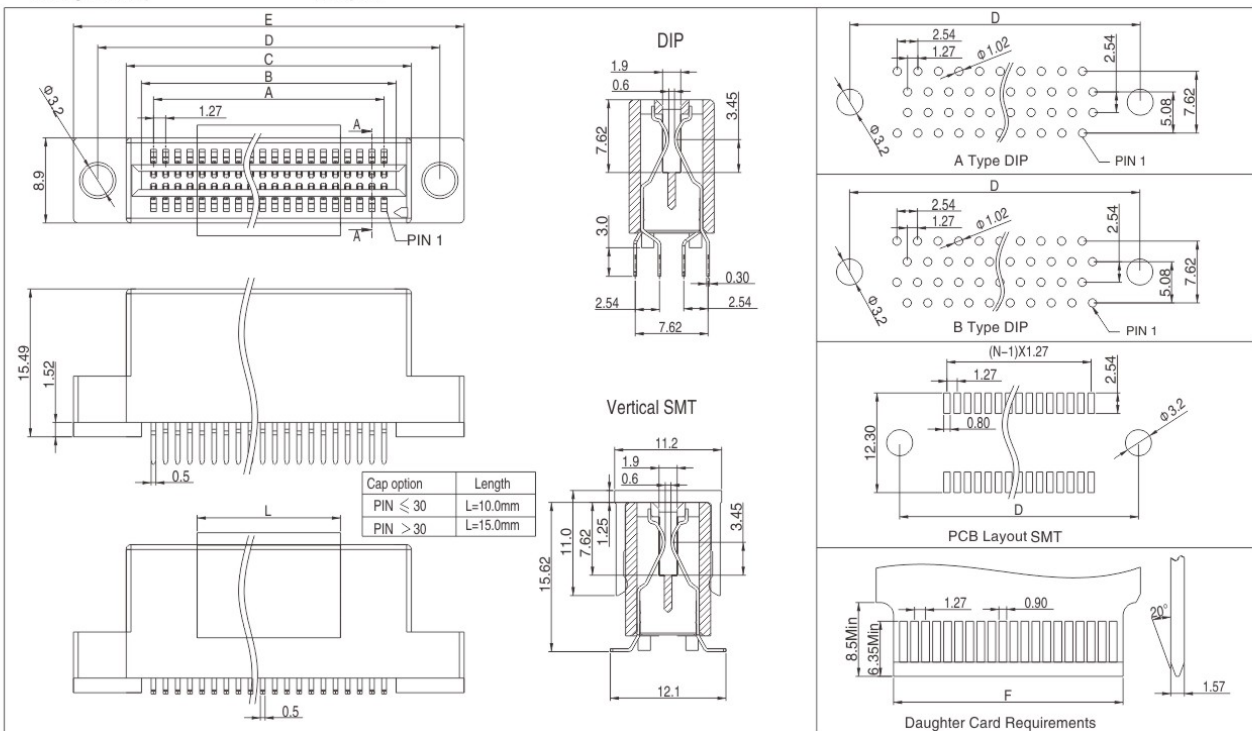
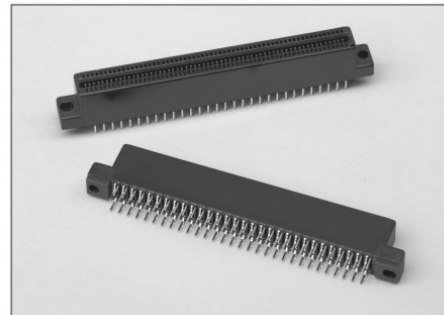


121-1

High Density Edge Connectors with Mounting Ears

Technical data :

Insulator	High temperature thermoplastic, UL 94V-0,Black
Contact	Copper alloy
Plating	Mating area gold over nickel Solder area tin over nickel
Operating temperature	-55° C to+105° C
Current rating	1 A
Operation Voltage	125VAC max
Contact Resistance	30 Milliohms max initial, 10 Milliohms max increase through testing,
Insulation resistance	min. 1000 MOhm
Dielectric Withstanding Voltage	500VAC
Capacitance	2 pF max
Contact Normal Force	75 Grams min
Insertion Force	7 oz max per mated pair
Withdrawal Force	1 oz min per mated pair
Contact Retention	1 lb min
Mating Durability	100 cycles



How to order

Serie-Nr. Nr. of contact PCB Pattern Plating Cap option Packing option

Nr. of contact	Dimensions(mm)						Code
	A	B	C	D	E	F	
10	5.08	7.62	10.08	16.76	21.84	7.37	010
12	6.35	8.89	12.07	18.03	23.11	8.64	012
20	11.43	13.97	17.15	23.11	28.19	13.72	020
26	15.24	17.78	20.96	26.92	32.00	17.53	026
30	17.78	20.32	23.50	29.46	34.54	20.07	030
40	24.13	26.67	29.85	35.81	40.89	26.42	040
50	30.48	33.02	36.20	42.16	47.24	32.77	050
60	36.83	39.37	42.55	48.51	53.59	39.12	060
80	49.53	52.07	55.25	61.21	66.29	51.82	080
100	62.23	64.77	67.95	73.91	78.99	64.52	100
120	74.93	77.47	80.65	86.61	91.69	77.22	120

PCB pattern	Code
A Type DIP	10
B Type DIP	20
Vertical SMT	30

Plating	Code
Selective gold flash plated	60

Cap option	Code
W/Cap	1
W/O Cap	2

Packing option	Code
Tube	1
Tape & Reel	2

W.E.