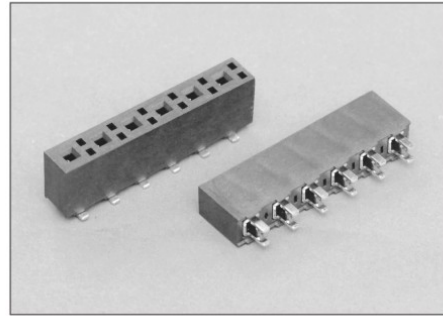


538C

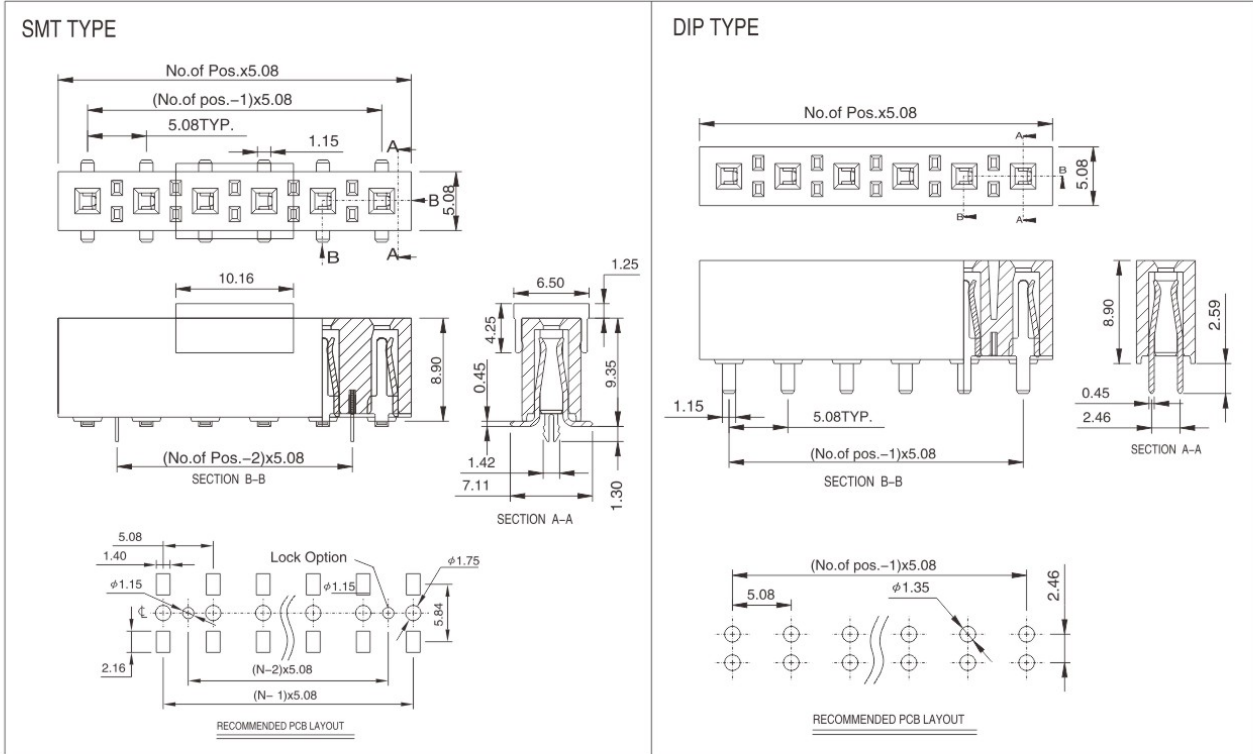
5.08PH Power Female Headers DIP/SMT Type

Technical Data:

| | |
|--------------------------|---|
| Insulator Material: | High Temperature Thermoplastic, UL 94V-0 |
| Contact: | stamped and formed, Phosphor Bronze/BeCu |
| Plating: | Au/Sn over Nickel |
| Current Rating: | 8.2Amp 30 °C Temperature Rise |
| Contact resistance: | 10 milliohms Max. |
| Insulator resistance: | 500 Megohms min. |
| Dielectric withstanding: | AC 500V mated with 538A |
| Operating Temperature: | -40 °C to +105 °C . |
| Max. processing Temp: | 230 °C for 30-60 seconds. 260 °C for 10 seconds. |
| Mates with: | 538A |



RoHS Compliant



How to order



| Nr. of Contact | Code |
|--------------------------|-------|
| Single Row 2 to 20 poles | 02-20 |

| Connector type | Code |
|----------------|------|
| DIP Type | 10 |
| SMT Type | 20 |

| Location peg option | Code |
|---------------------|------|
| W / Lock | 10 |
| W / O Lock | 00 |

| Pick & Place Pad | Code |
|------------------|------|
| W/ Cap | 1 |
| W/O Cap | 2 |

| Plating option | Code |
|-----------------------------|------|
| Full Gold Flash plated | 10 |
| Tin plated | 50 |
| Selective gold flash plated | 60 |
| 10u" Selective gold plated | 610 |
| 15u" Selective gold plated | 615 |

| Contact Material | Code |
|------------------|------|
| Phosphor Bronze | 2 |
| BeCu | 3 |

| Packing Option | Code |
|----------------|------|
| Tube | 1 |
| Tape & Reel | 2 |

W.E.