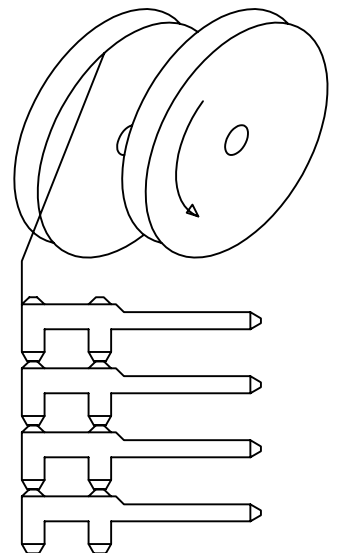
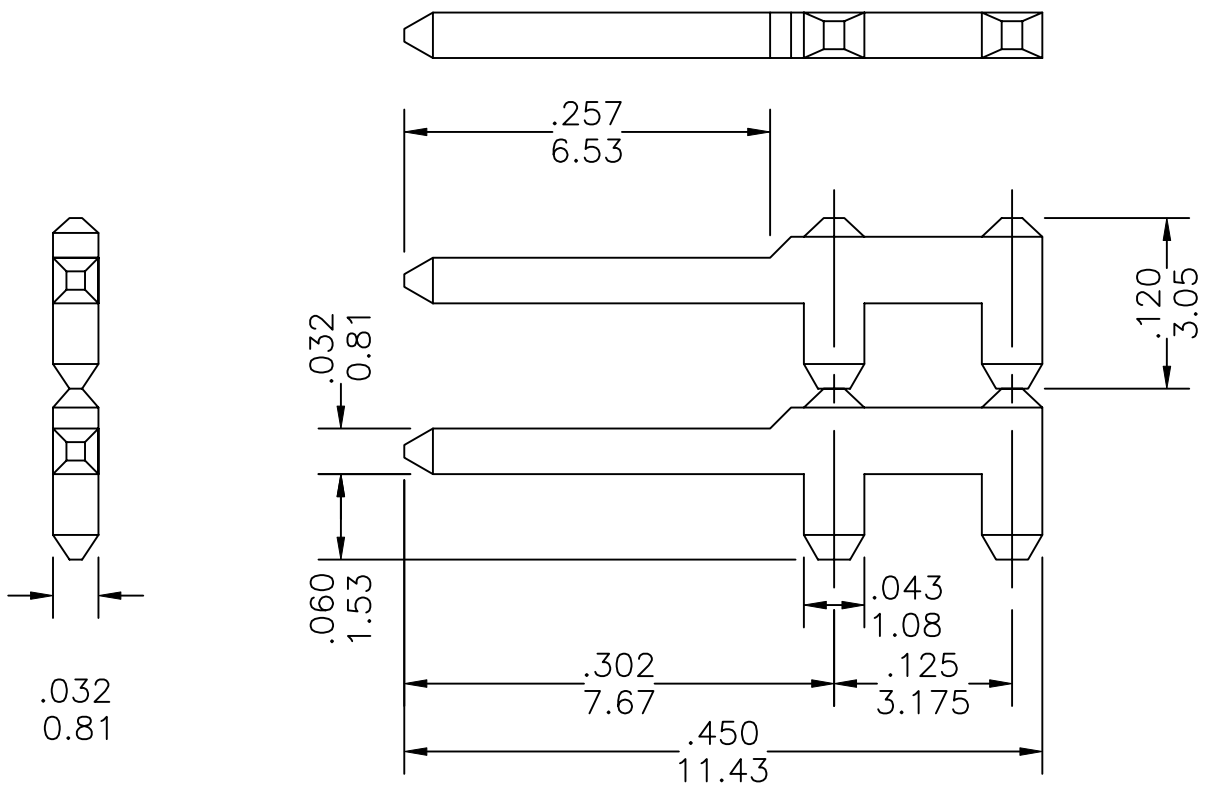


F-TER-AUTO-TRC-T-PB Series

FEATURES:

- . Material is Red Copper
- . Qty/Reel: 20K PCS
- . thickness:.032"[0.8mm]

UNIT: INCH
MM



Ordering Information

Series No.	Material	Contact	Plating	
F-TER-AUTO	- TRC	- T	- PB	
F-TER-AUTO Series	TRC: Red Copper	T: Tin		ROHS