

## .079" (2.00mm) Center P.C Board Connector

### 6801 Series

#### FEATURES:

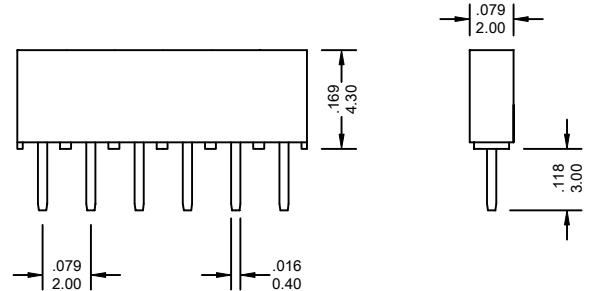
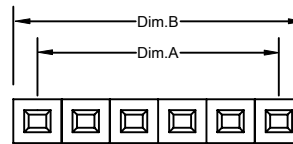
- . 2-40 Circuits
- . PBT + 30% Glass Fiber [UL 94V-0]
- . Designed for parallel and perpendicular board stacking, also for PCB-to-harness and PCB-to-chassis connection
- . Stackable side-to-side on .079" [2.00mm] grid
- . Mates with .0197" [0.50mm] square pins
- . Mounted on a board right angle headers, and straight headers

#### SPECIFICATIONS:

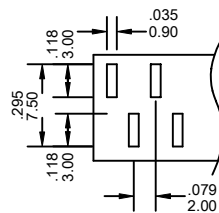
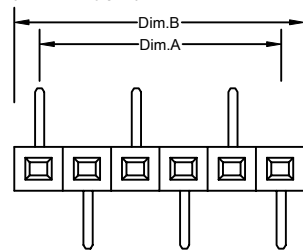
- . Current rating: 2A AC, DC
- . Voltage rating: 250V AC, Maximum
- . Temperature range: -40°C ~+ 105°C
- . Contact resistance: Initial Value/10mΩ max.  
After environmental testing /20mΩ max.
- . Insulation resistance: 5000 MΩ min
- . Withstand Voltage: 1500V AC/minute
- . Applicable PC Board thickness: .063" [1.6mm]

UNIT: INCH  
MM

(Straight)

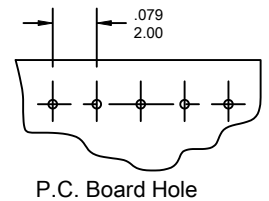
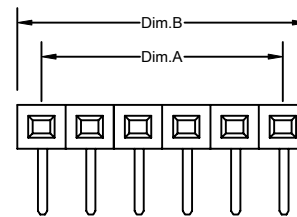


(SMT Type)

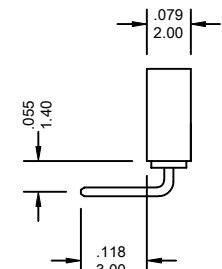
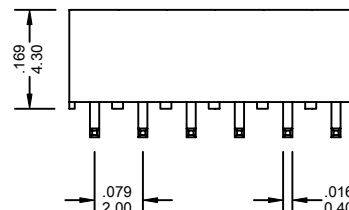
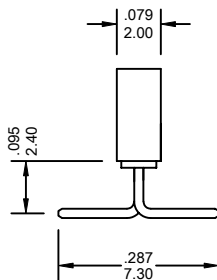
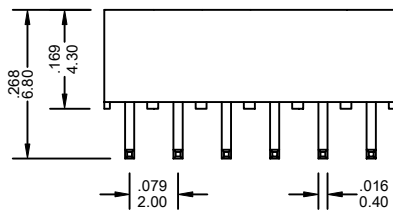


P.C Board layout

(Right Angle)



P.C. Board Hole



#### Ordering Information 6801 Series

Series No.	No. of Contacts	Contact Type	P.C.B Mount	Contact Plating		
6801	- 06P	S	A	T	- PB	
6801 Series	02P ~ 40P	S: Straight R: Right Angle	A: Standard Type B: SMT Type	T: Tin G1: Gold Flash G5: 5u" Gold G10: 10u" Gold G15: 15u" Gold G30: 30u" Gold [G: Full Gold]	S1: Gold Flash S5: 5u" Gold S10: 10u" Gold S15: 15u" Gold S30: 30u" Gold [S: Selective Gold]	RoHs
* PIN LENGTH CAN BE CHANGED TO CUSTOM'S SPECIFICATION						

#### Dimensional Information

Circuits	Dim.A± .008 0.20	Dim.B± .008 0.20	Circuits	Dim.A± .008 0.20	Dim.B± .008 0.20	Circuits	Dim.A± .008 0.20	Dim.B± .008 0.20
2	.079 2.00	.157 4.00	3	.157 4.00	.236 6.00	4	.236 6.00	.315 8.00

6801 Series

\* FOR CIRCUIT SIZES 5 THROUGH 40 ADD .079" OR 2.00 MM FOR EACH ADDITIONAL PIN.