

.079" (2.00mm) Center Crimp Terminal Housing

6000 Series

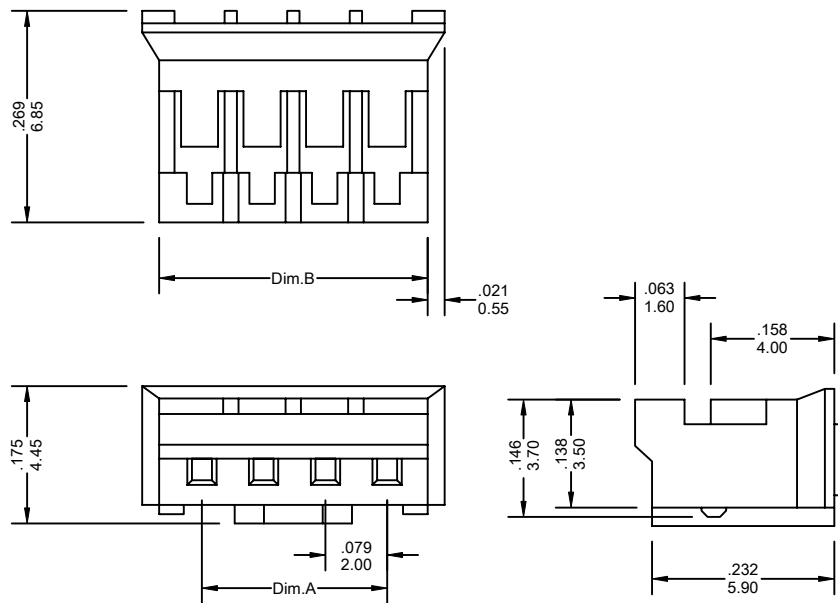
FEATURES:

- . 2-20 Circuits
- . .0197"[0.50mm] square wire pins
- . Nylon, [UL 94V-0]
- . Accepts double cantilever crimp terminal [6000-T]
- . Mates with 6600 series wafers polarized

SPECIFICATIONS:

- . Current rating: 2A AC. DC
- . Voltage rating: 250V AC. Maximum
- . Temperature range: -40°C ~+105°C
- . Contact resistance: Initial Value/10mΩ max.
After environmental testing
/20mΩ max.
- . Insulation resistance: 1000 MΩ min
- . Withstand Voltage: 1500V AC/minute
- . Applicable wires: AWG #30 ~ #22

UNIT: INCH
MM



Ordering Information 6000 Series

Series No.	No. of Contacts	
6000	- 04P	- A
6000 Series	02P ~ 20P	RoHs

Dimensional Information

Circuits	Dim.A± .008 0.20	Dim.B± .008 0.20	Circuits	Dim.A± .008 0.20	Dim.B± .008 0.20	Circuits	Dim.A± .008 0.20	Dim.B± .008 0.20
2	.079 2.00	.228 5.80	3	.157 4.00	.307 7.80	4	.236 6.00	.386 9.80

6000 Series

* FOR CIRCUIT SIZES 5 THROUGH 20 ADD .079" OR 2.00MM FOR EACH ADDITIONAL PIN.