

# Centronic Connector Solder Cup Metal Shell Male Type



## 57E Series (Plug) Top Cable Entry

### FEATURES:

- . Contact positions: 14,24,36,50
- . Available in plug styles
- . Designed for cable-to-cable and cable-to-panel applications with spring latches
- . Metal shell provides grounding and shielding capability
- . Terminal option with various types
- . One touch click system
- . Connector and hood sold as complete assembly
- . Mates with industry compatible connectors

### MATERIALS:

- . Contacts: Phosphor Bronze
- . Housing: PBT (UL 94V-0)
- . Shell: Cold Roller Steel

UNIT: INCH  
MM

### ELECTRICAL CHARACTERISTICS:

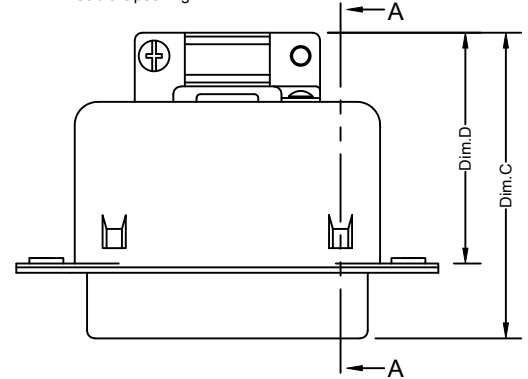
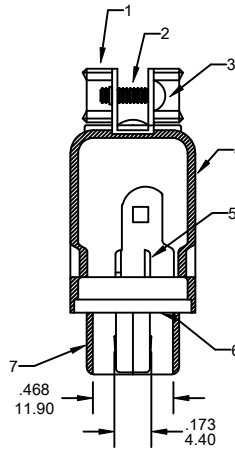
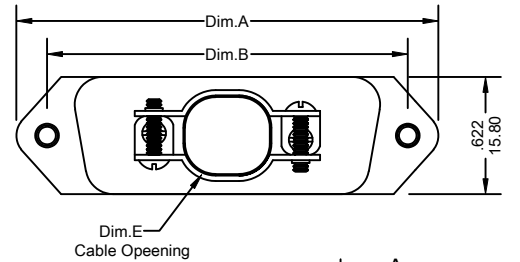
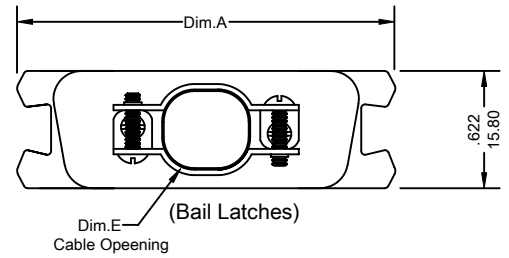
- . Current rating: 5 Amperes
- . Withstanding Voltage: AC 1200V r.m.s
- . Insulation Resistance: 1000 Megohms Minimum at DC 500V
- . Contact Resistance: 30 Milliohms Maximum
- . Operation Temperature: -55C° ~ +105C°

### MECHANICAL CHARACTERISTICS:

- . Contact Resistance Force: 322 g. Maximum
- . Contact Separation Force: 70 g. Minimum

### FINISHES:

- . Contact: Gold Flash ,10,15,30,50u"
- . Shell: Nickel



## Ordering Information 57E Series

Series No.	Contact Type	No. of Contacts	Contacts Plating	Insulation Color	
57E	- 10	36	0	0	- PB
57E Series	10: Through Hole 30: Bail Latches (Plug)	14 36 24 50	0: Gold Flash 1: 5u" Gold 2: 10u" Gold 3: 15u" Gold 4: 30u" Gold 5: Selective Gold Flash 6: Selective 5u" Gold 7: Selective 10u" Gold 8: Selective 15u" Gold 9: Selective 30u" Gold	0: Black 1: Blue 2: White 3: Grey	RoHs

## Dimensional Information (Bail Latches)

Dim. \ Circuits	Circuits				
	14	24	36	50	
Dim.A±	.005 0.13	1.500 38.10	1.921 48.80	2.433 61.80	3.032 77.00
Dim.C±	.004 0.10	1.563 39.70	1.583 40.20	1.598 40.60	1.717 43.60
Dim.D±	.004 0.10	.843 21.41	.825 20.96	.905 22.99	.995 25.27

NO.	PART NAME	NO.	PART NAME
1	CABLE CLAMP	5	TERMINAL
2	RIVET	6	INSULATOR
3	SCREW	7	FRONT SHELL
4	BACK SHELL		

## Dimensional Information (Through Hole)

Dim. \ Circuits	Circuits				
	14	24	36	50	
Dim.A±	.005 0.13	1.729 43.92	2.154 54.71	2.665 67.69	3.259 82.78
Dim.B±	.004 0.10	1.417 35.99	1.842 46.79	2.352 59.74	2.947 74.85
Dim.C±	.004 0.10	1.008 25.60	1.436 36.47	1.943 49.35	2.538 64.47

Dim. \ Circuits	Circuits				
	14	24	36	50	
Dim.D±	.004 0.10	.510 12.96	.935 23.76	2.538 64.72	2.041 51.84
Dim.E±	.004	.422*	.473	.473*	.473*
	0.10	10.72*	12.01	12.01*	12.01*
		7.77	16.23	19.46	