

.100"X.300" (2.54mmX7.62mm) Dip Plug Connector

3200 Series

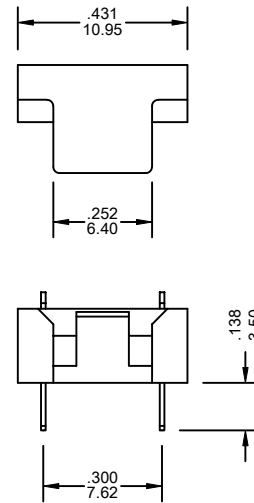
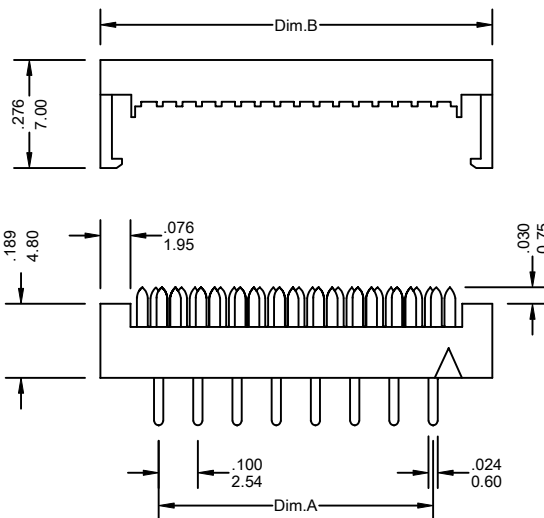
FEATURES:

- . 8-40 Circuits
- . PBT + 30% Glass Fiber [UL 94V-0]
- . Color of plastic Gray
- . Material of pin Phosphor Bronze
- . Ideal for board-to-board application
- . Compatible with standard dip socket on .100"X.300" [2.54mmX7.62mm]
- . Heavy duty contacts with extra strength
- . Choice of plating options
- . Ribbed base aids cable positioning
- . Quick termination

SPECIFICATIONS:

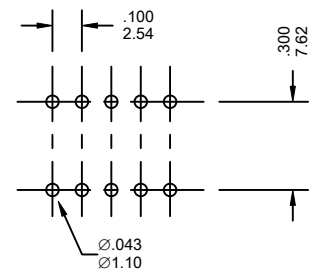
- . Current rating: 3A AC, DC
- . Voltage rating: 250V AC, Maximum
- . Temperature range: -40°C ~ +105°C
- . Contact resistance: Initial Value/10mΩ max.
After environmental testing /20mΩ max.
- . Insulation resistance: 5000 MΩ min
- . Withstand voltage: 1500V AC/minute
- . Applicable wires: AWG 18, 7 strands
.050" [1.27mm] pitch flat cable
- . Applicable PC Board thickness: .063" [1.6mm]
[Unloaded Version Shown]

UNIT: INCH
MM



Ordering Information 3200 Series

Series No.	No. of Contacts	Contact Plating	
3200	- 20P	T	- PB
3200 Series	08P 16P 24P 10P 18P 28P 14P 20P 40P	T: Tin G1: Gold Flash S5: 5u" Gold S10: 10u" Gold S15: 15u" Gold S30: 30u" Gold [G: Full Gold] [S: Selective Gold]	RoHs



Recommended P.C. Board Hole

Dimensional Information

Dimension	Circuits									
	08	10	14	16	18	20	24	28	40	
Dim.A±	.008 0.20	.300 7.62	.400 10.16	.600 15.24	.700 17.78	.800 20.32	.900 22.86	1.100 27.94	1.300 33.02	1.900 48.26
Dim.B±	.008 0.20	.599 15.22	.699 17.76	.899 22.84	.999 25.38	1.099 27.92	1.199 30.46	1.399 35.54	1.599 40.62	2.199 55.86