

# .156" (3.96mm) Center Wafer Assembly

## 2460 Series

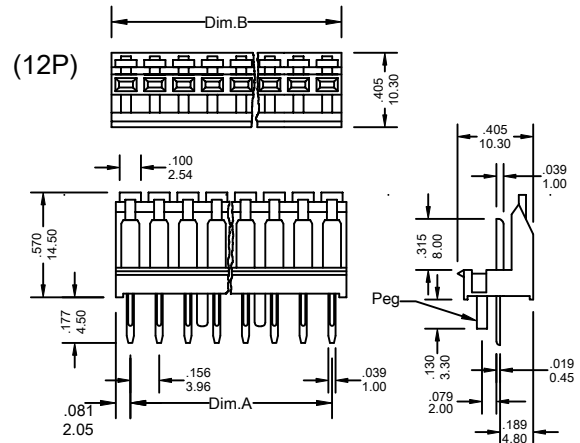
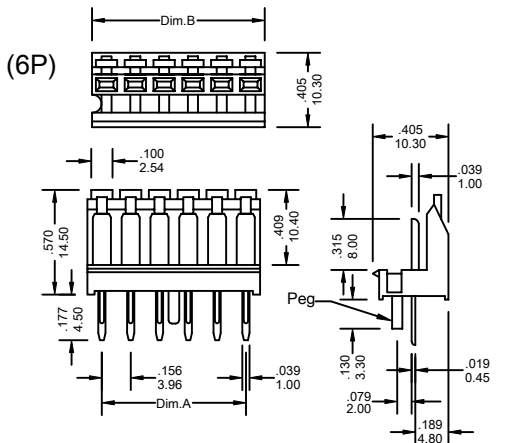
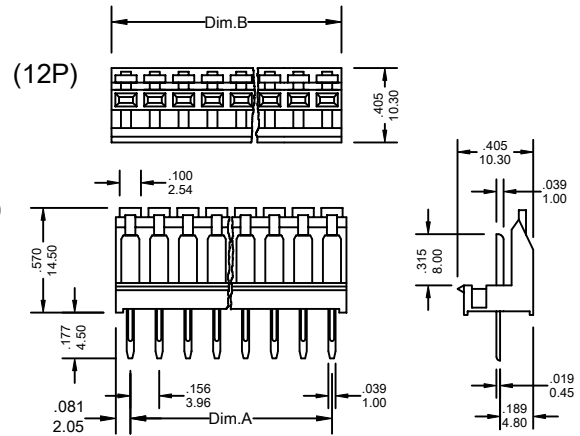
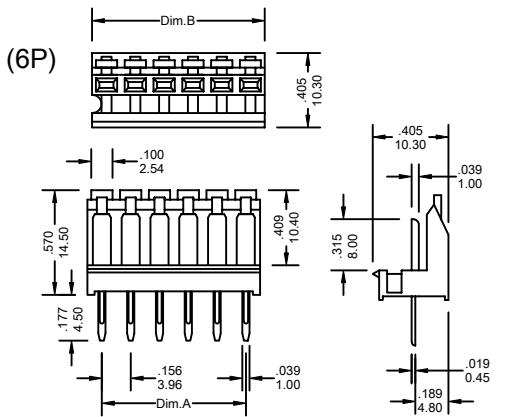
### FEATURES:

- . 6 and 12 Circuits
- . Friction lock
- . 94V-0 Nylon
- . .156"[3.96mm] Straight wafer
- . Mates with 2450 housing

### SPECIFICATIONS:

- . Current rating: 7A AC, DC
- . Voltage rating: 250V AC, Maximum
- . Temperature range: -40°C ~ +105°C
- . Contact resistance: Initial Value/10mΩ max.  
After environmental testing  
/20mΩ max.
- . Insulation resistance: 5000 MΩ min
- . Withstand voltage: 1500V AC/minute
- . Applicable PC board thickness: .063"[1.6mm]

UNIT: INCH  
MM

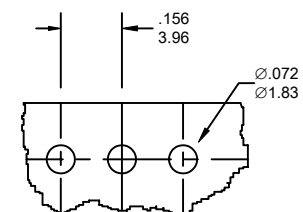


### Ordering Information 2460 Series

Series No.	No. of Contacts	Contact Type	Contact Plating	Other Options	
2460	- 06P	S	T	- P	- PB
2460 Series	06P & 12P	S: Straight	T: Tin S1: Gold Flash S5: 5u" Gold S10: 10u" Gold S15: 15u" Gold S30: 30u" Gold [S: Selective Gold]	P: With Pegs	RoHs

### Dimensional Information

Circuits	Dim.A± .008 0.20	Dim.B± .008 0.20	Circuits	Dim.A± .008 0.20	Dim.B± .008 0.20
6	.780 19.80	.941 23.90	12	1.716 43.56	1.877 47.66



Recommended P.C. Board  
Hole Dimensions