

## .084" (2.13mm) Power Connector (Plug)

### 2130-M Series

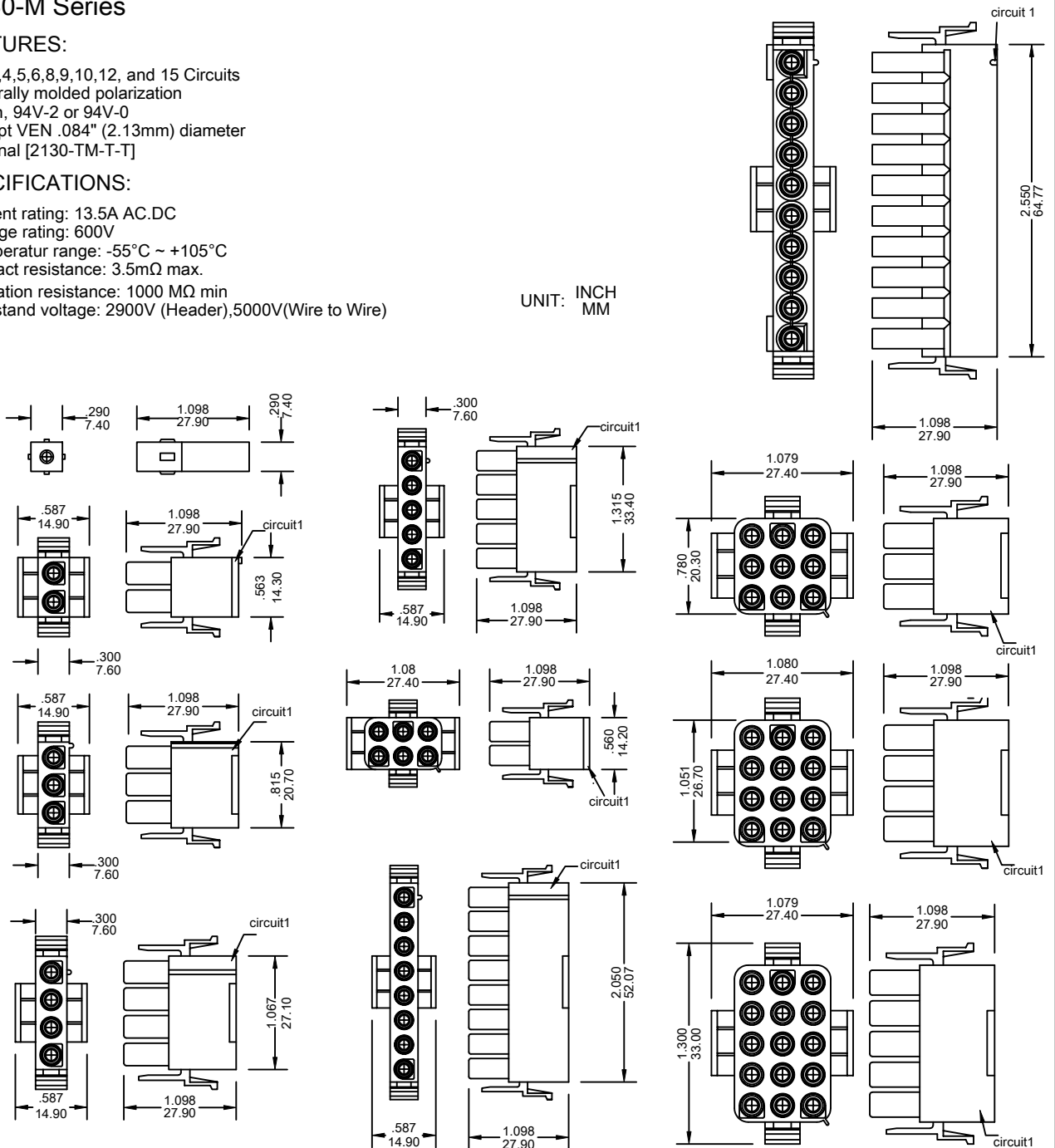
#### FEATURES:

- . 1,2,3,4,5,6,8,9,10,12, and 15 Circuits
- . Integrally molded polarization
- . Nylon, 94V-2 or 94V-0
- . Accept VEN .084" (2.13mm) diameter terminal [2130-TM-T-T]

#### SPECIFICATIONS:

- . Current rating: 13.5A AC/DC
- . Voltage rating: 600V
- . Temperature range: -55°C ~ +105°C
- . Contact resistance: 3.5mΩ max.
- . Insulation resistance: 1000 MΩ min
- . Withstand voltage: 2900V (Header), 5000V (Wire to Wire)

UNIT: INCH  
MM

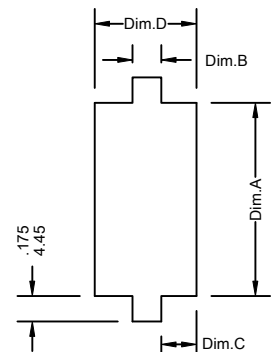


### Ordering Information 2130-M Series

Series No.	No. of Contacts	Housing Type	Material	
2130	04P	M	V2	A
2130 Series	02P 03P 04P 08P 12P 15P	M: Male	V0: UL 94V-0, Nature V2: UL 94V-2, Nature	RoHs

#### Panel Dimensional Information

Number of circuit	2	3	4	5	6	8	9	10	12	15
Dim.A ±.005 ±0.13	.585 14.35	.815 20.70	1.065 27.05	1.315 33.40	.565 14.35	2.065 52.45	0.815 20.70	2.567 65.20	1.065 27.05	1.315 33.40
Dim.B ±.005 ±0.13	.341 8.650	.341 8.650	.341 8.650	.341 8.650	.480 12.20	0.340 8.640	.480 12.20	0.154 3.910	.480 12.20	.480 12.20
Dim.C ±.005 ±0.13	.945 24.00	.945 24.00	.945 24.00	.945 24.00	.276 7.00	0.095 2.410	.276 7.00	0.189 4.800	.276 7.00	.276 7.00
Dim.D ±.005 ±0.13	.532 13.50	.532 13.50	.532 13.50	.532 13.50	1.030 26.15	0.530 13.46	1.030 26.15	0.530 13.46	1.030 26.15	1.030 26.15



panel thickness: 0.03" ~ .090"  
(0.762 ~ 2.286mm)