

.079"X.079" (2.00mmX2.00mm) Center Low Profile Header For Use With IDC Socket Connector



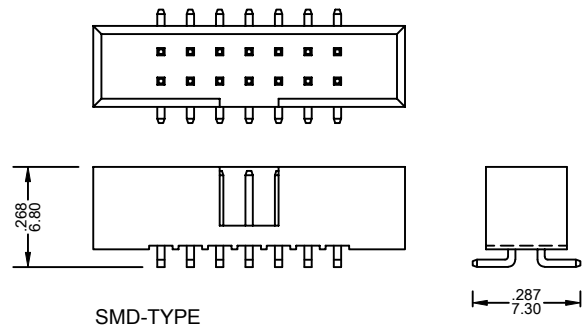
2002 Series

FEATURES:

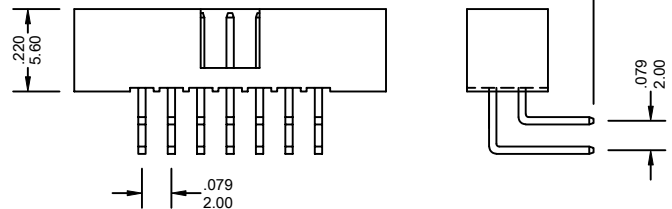
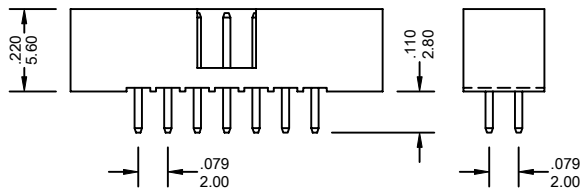
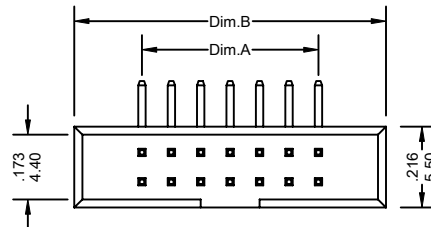
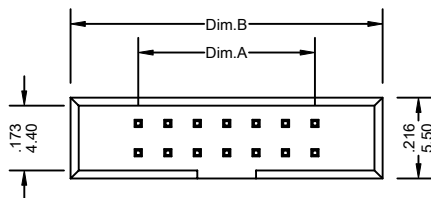
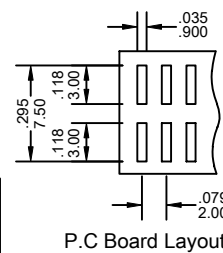
- . 10-64 Circuits
- . PBT or Nylon 6T, [UL 94V-0]
- . Low profile header body helps maximum packaging density
- . Available with warp post tail header
- . Fully-shrouded body provides maximum protection for header mating pins

SPECIFICATIONS:

- . Current rating: 2A AC, DC
- . Voltage rating: 250V AC, Maximum
- . Temperature range: -40°C ~ +105°C
- . Contact resistance: Initial Value/10mΩ max.
After environmental testing /20mΩ max.
- . Insulation resistance: 5000 MΩ min
- . Withstand Voltage: 1500V AC/minute
- . Applicable PC board thickness: .063"[1.6mm]



UNIT: INCH
MM

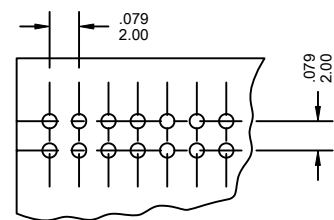


(S: Straight)

(R: Right Angle)

Ordering Information 2002 Series

Series No.	No. of Contacts	Contact Type	Contact Plating	Material	P.C.B TYPE	
2002	- 2X07P	S	T	- 6T	- SMT	- PB
2002 Series	2X05P ~ 2X32P	S: Straight R: Right Angle	T: Tin G1: Gold Flash G5: 5u" Gold G10: 10u" Gold G15: 15u" Gold G30: 30u" Gold [G: Full Gold]	Nylon 6T	SMT Type	RoHs



P.C Board Layout

Dimensional Information

Circuits	Dim.A± .008 0.20	Dim.B± .008 0.20	Circuits	Dim.A± .008 0.20	Dim.B± .008 0.20	Circuits	Dim.A± .008 0.20	Dim.B± .008 0.20
10	.315 8.00	.677 17.20	26	.944 24.00	1.307 33.20	50	1.889 48.00	2.251 57.20
14	.472 12.00	.834 21.20	30	1.102 28.00	1.464 37.20	60	2.283 58.00	2.645 67.20
16	.551 14.00	.913 23.20	34	1.260 32.00	1.622 41.20	64	2.440 62.00	2.803 71.20
20	.708 18.00	1.070 27.20	40	1.496 38.00	1.858 47.20			
24	.867 22.00	1.229 31.20	44	1.654 42.00	2.016 51.20			