

## .394" - .315" (10.00mm - 8.00mm) Center Header

### 1888 Series

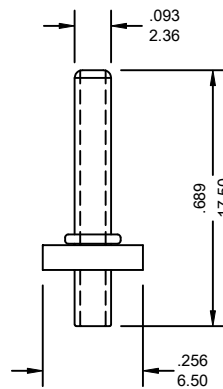
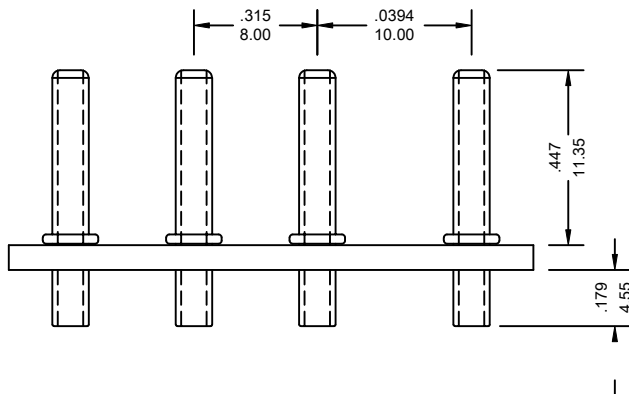
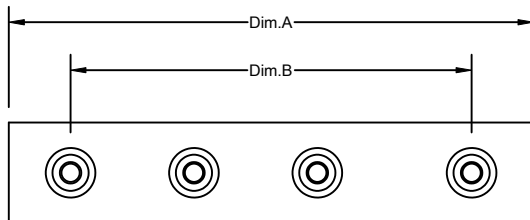
#### FEATURES:

- . 1-6 Circuits
- . Nylon, [UL 94V-0]
- . .093" [2.36mm] round wire pins
- . Mates with .394" - .315" [10.00mm-8.0mm] center crimp housing [1080]

#### SPECIFICATIONS:

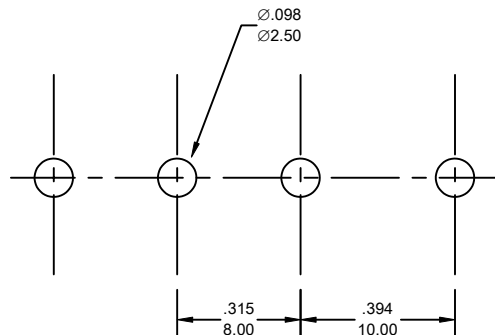
- . Current rating: 7A AC. DC
- . Voltage rating: 250V AC. Maximum
- . Temperature range: -40°C ~ +105°C
- . Contact resistance: Initial Value/10mΩ max.  
After environmental testing /20mΩ max.
- . Insulation resistance: 5000 MΩ min
- . Withstand Voltage: 1500V AC/minute
- . Applicable wire: AWG #22 ~ #16

UNIT: INCH  
MM



#### Ordering Information 1888 Series

Series No.	No. of Contacts	Contact Type	Contact Plating	
1888	- 04P	S	G1	- PB
1888 Series	01P ~ 06P	S: Straight	T: Tin G1: Gold Flash G5: 5u" Gold G10: 10u" Gold G15: 15u" Gold G30: 30u" Gold [G: Full Gold]	RoHs



P.C.Board Hole Layout

#### Dimensional Information

Circuits	Dim.A± .008 0.20	Dim.B± .008 0.20	Circuits	Dim.A± .008 0.20	Dim.B± .008 0.20	Circuits	Dim.A± .008 0.20	Dim.B± .008 0.20
1	.079 6.00	—	2	.709 18.00	.394 10.00	3	1.024 26.00	.709 18.00

1888 Series

\* FOR CIRCUIT SIZES 4 THROUGH 6 ADD .315" OR 8.00MM FOR EACH ADDITIONAL PIN.