

.059" (1.50mm) Center P.C.Board Connectors

1500 Series

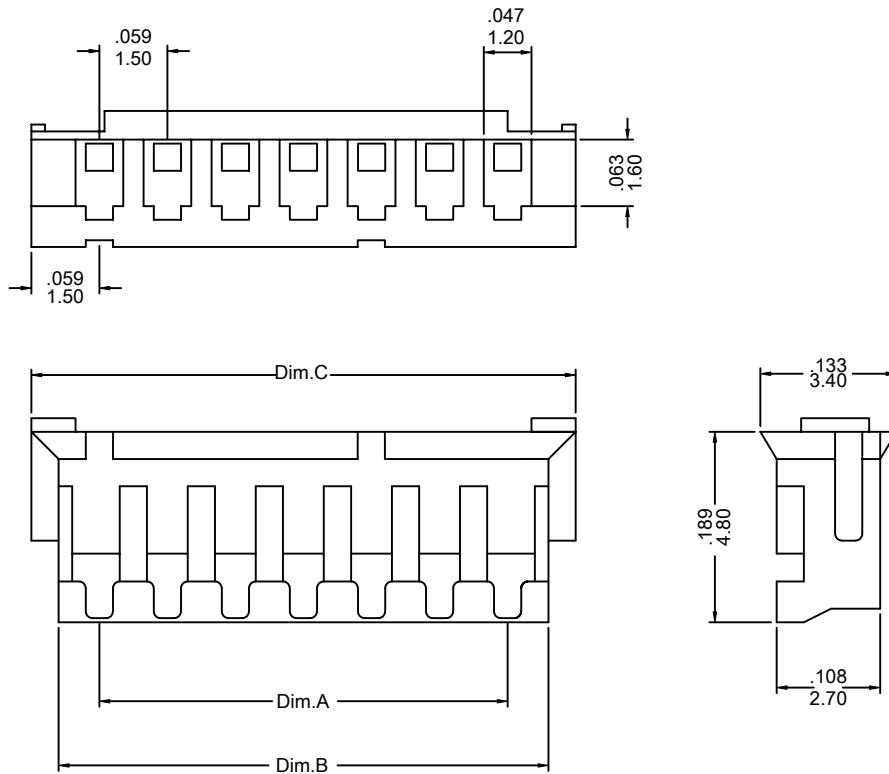
FEATURES:

- . 2-13 Circuits
- . Mates with .020" [0.50mm] Terminals wire pins
- . Nylon 66, [UL 94V-0]
- . Accepts double cantilever crimp terminal [1500-T]
- . Mates with 1560 series wafers polarized

SPECIFICATIONS:

- . Current rating: 1A AC, DC
- . Voltage rating: 50V AC, Maximum
- . Temperatur range: -20°C ~ +85°C
- . Insulation resistance: 1000 MΩ min
- . Withstand Voltange: 800V AC/minute
- . Applicable wires: AWG #26 ~ #30

UNIT: INCH
MM



Ordering Information 1500 Series

| | | |
|-------------|-----------------|------|
| Series No. | No. of Contacts | |
| 1500 | - 07P | - A |
| 1500 Series | 02P ~ 13P | RoHs |

Dimensional Information

| Circuits | Dim.A± .008 0.20 | Dim.B± .008 0.20 | Dim.C± .012 0.30 | Circuits | Dim.A± .008 0.20 | Dim.B± .008 0.20 | Dim.C± .012 0.30 |
|----------|---------------------|---------------------|---------------------|----------|---------------------|---------------------|---------------------|
| 2 | .059 1.50 | .134 3.40 | .177 4.50 | 3 | .118 3.00 | .193 4.90 | .236 6.00 |

1500 Series

* FOR CIRCUIT SIZES 4 THROUGH 13 ADD .059" OR 1.50MM FOR EACH ADDITIONAL PIN.