

# Chip Carrier Sockets

## 101 Series

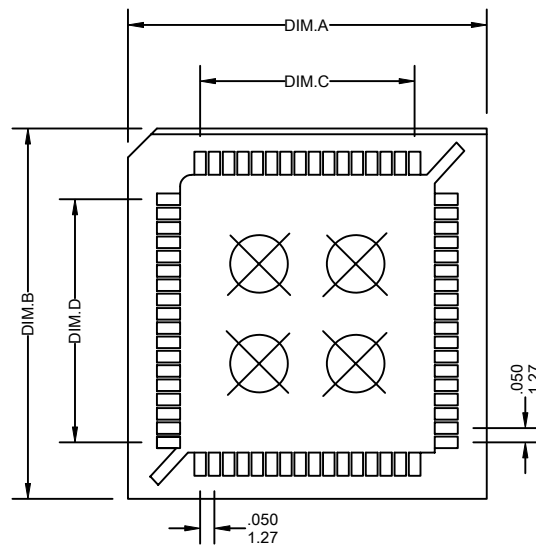
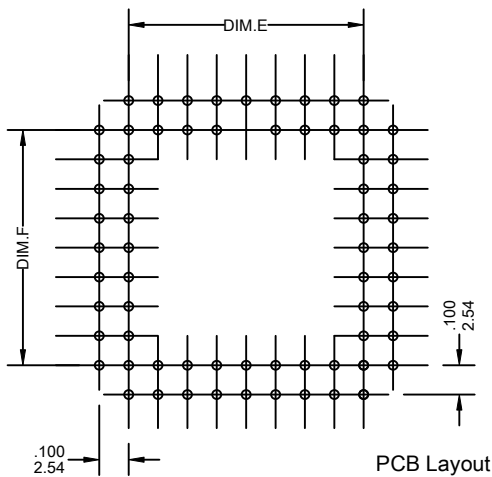
### Features:

- . Contact material: Phosphor Bronze
- . Insulation: PBT +30% Glass-Fiber (UL94V-0)
- . Current rating: Current: DC 1A  
Duration: 30 min

### SPECIFICATIONS:

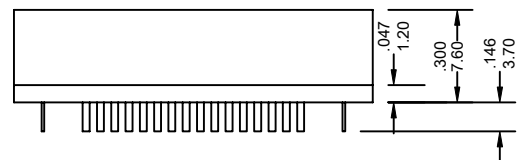
- . Withstanding voltage: Voltage: 600V AC  
Duration: 1 min
- . Contact resistance: Voltage: 200 MV  
Current: 1A  
Requirement: 20 milliohm max
- . Insulation resistance: Voltage: 500V DC  
Duration: 1 min  
Requirement: 1000 megohms min
- . Temperature range: -50°C ~ +105°C
- . Contact plating: Tin or Gold over nickel

UNIT: INCH  
MM



### Ordering Information 101 Series

Series No.	No. of Contacts	Contact Plating	
101	44P	T	PB
101 Series	20P 52P 28P 68P 32P 84P 44P	T: Tin S1: Gold Flash S5: 5u" Gold S10: 10u" Gold S15: 15u" Gold S30: 30u" Gold [S: Selective Gold]	RoHs



### Dimensional Information

Circuits	20	28	32	44	52	68	84
Dim.A±	.008 0.20	.610 15.50	.710 18.04	.809 20.54	.924 23.48	1.019 25.88	1.247 31.66
Dim.B±	.008 0.20	.610 15.50	.710 18.04	.809 20.54	.924 23.48	1.019 25.88	1.247 31.66
Dim.C±	.008 0.20	.200 5.08	.300 7.62	.300 7.62	.500 12.70	.600 15.24	.800 20.32
Dim.D±	.008 0.20	.200 5.08	.300 7.62	.400 10.16	.500 12.70	.600 15.24	.800 20.32
Dim.E±	.008 0.20	.200 5.08	.300 7.62	.300 7.62	.500 12.70	.600 15.24	.800 20.32
Dim.F±	.008 0.20	.200 5.08	.300 7.62	.400 10.16	.500 12.70	.600 15.24	.800 20.32