

.079" (2.00mm) Center Single Row Housing
.079"X.079" (2.00mmX2.00mm) Center Double Row PCB Housing



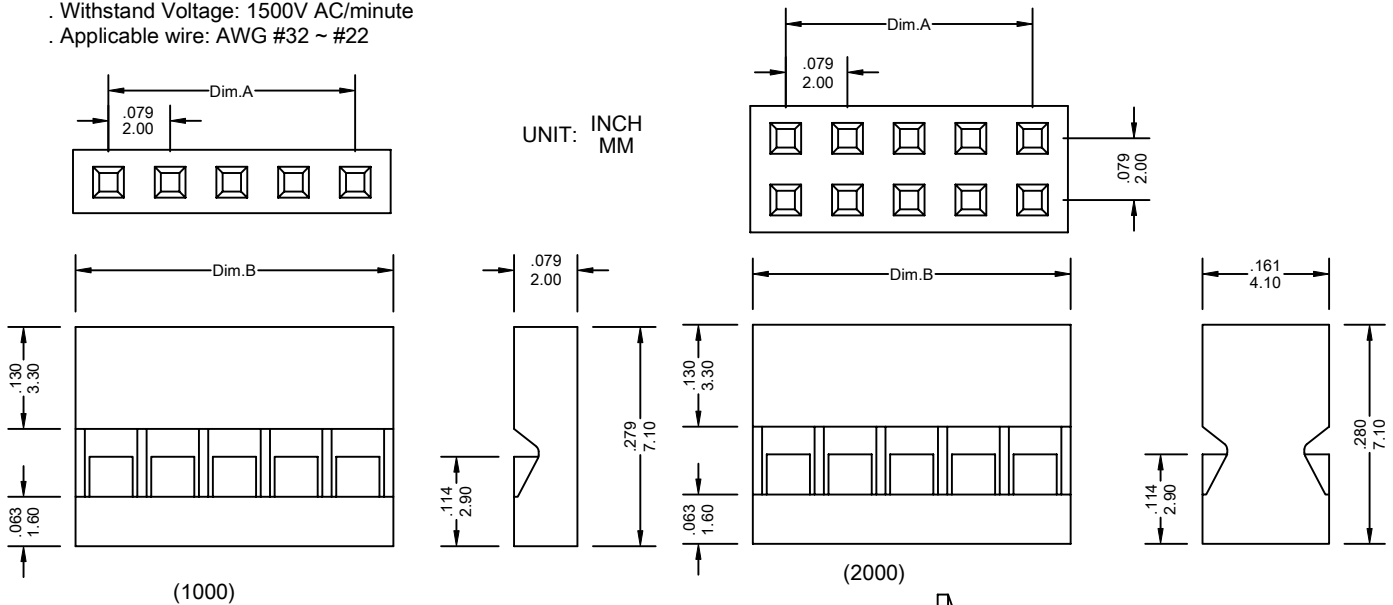
1000 Series
2000 Series

FEATURES:

- . 1000 Series 1-40 Circuits, 2000 Series 4-80 Circuits
- . Nylon, [UL 94V-0] Black
- . Mates with .0197" [0.50mm] square pins
- . Single Row, .079"[2.00mm]
- . Double Row, .079"X.079" [2.00mmX2.00mm]
- . Accept double cantilever crimp terminal [1000-T]
- . Polarizing Keys [1000-K]

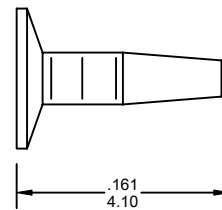
SPECIFICATIONS:

- . Current rating: 2A AC. DC
- . Voltage rating: 250V AC. Maximum
- . Temperature range: -40°C ~ +105°C
- . Contact resistance: Initial Value/10mΩ max.
After environmental testing /20mΩ max.
- . Insulation resistance: 5000 MΩ min
- . Withstand Voltage: 1500V AC/minute
- . Applicable wire: AWG #32 ~ #22



Ordering Information 1000,2000 Series

Series No.	No. of Contacts		Series No.	No. of Contacts	
1000	05P	- A	2000	2X05P	- A
1000 Series	01P ~ 40P	RoHs	2000 Series	2X02P ~ 2X40P	RoHs



Polarizing Plug-1000-K
 For Mini and Maxi Latch Housing
 Material: White Nylon, UL 94V-0
 Temperature Range: -40°C to + 105°C

Dimensional Information

Circuits	Dim.A± .008/0.20	Dim.B± .008/0.20	Circuits	Dim.A± .008/0.20	Dim.B± .008/0.20	Circuits	Dim.A± .008/0.20	Dim.B± .008/0.20
1	—	.079/2.00	2	.079/2.00	.157/4.00	3	.157/4.00	.236/6.00

1000 Series
 * FOR CIRCUIT SIZES 4 THROUGH 40 ADD .079" OR 2.00MM FOR EACH ADDITIONAL PIN.

Circuits	Dim.A± .008/0.20	Dim.B± .008/0.20	Circuits	Dim.A± .008/0.20	Dim.B± .008/0.20	Circuits	Dim.A± .008/0.20	Dim.B± .008/0.20
2	—	.079/2.00	4	.079/2.00	.157/4.00	6	.157/4.00	.236/6.00

2000 Series
 * FOR CIRCUIT SIZES 8 THROUGH 80 ADD .079" OR 2.00MM FOR EACH ADDITIONAL PIN.