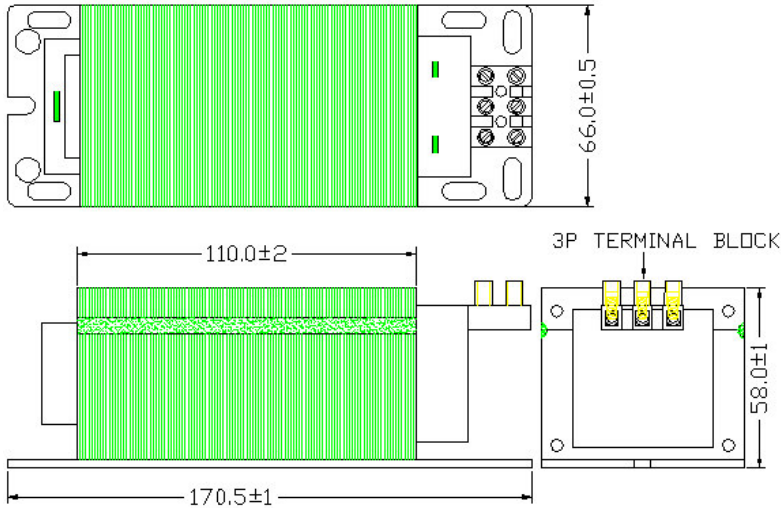


TDC Power Products Co.,Ltd  
Cheng Yen Electronic Co.,Ltd

## HPM-66E-2502

FOR Mercury & Metal Halide  
LAMP 250W QE 250 or ME 250

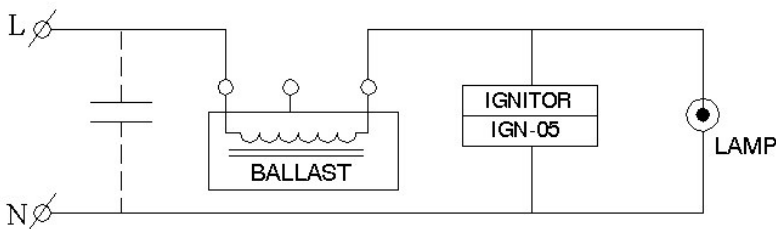
### ELECTRICAL & MECHANICAL SPECIFICATION



#### ELECTRONICAL SPECIFICATION

Input Voltage	<b>240</b>	<b>Vac</b>
Frequency	<b>50</b>	Hz
Power Factor(With Capacitor)	<b>0.9</b>	COS $\theta$
Line Regulation	<b>6</b>	$\pm\%$
Input Watts(Operating)	<b>280</b>	W (Max)
Lamp Watts	<b>250</b>	W $\pm 5\%$
Lamp Voltage	<b>125</b>	VAC
Operating Current(W/ Capacitor)	<b>1.35</b>	A
Lamp Current(Operating)	<b>2.1</b>	A
Hi-Pot	<b>3750</b>	VAC/Min
Watts Range(Output)	<b>235~265</b>	W
Efficiency Of Lamp	<b>0.83</b>	$\eta$
Voltage Range At Rated(Output)	<b>115~135</b>	VAC
Current Range At Rated(Output)	<b>1.90~2.30</b>	A
Current Range At Short Test(Output)	<b>2.50</b>	A
Time For Starting	<b>15</b>	Min
For Use Lamp	<b>QE-250 / ME-250</b>	
Max Distance Ignitor To Lamp	<b>2.0</b>	Ft

#### ELECTRICAL CIRCUIT

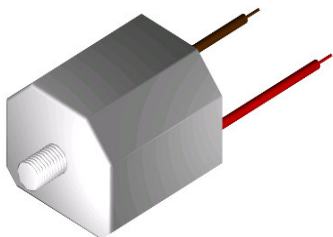


#### MECHANICAL SPECIFICATION

Dimensions (L*W*H)	<b>170.5*66.0*58.0mm</b>
Weight	<b>2430</b> g
Environment:	
Operating Temperature	<b>-10 To 40</b> °C
Storage Temperature	<b>-20 To 70</b> °C
Relative Temperature 40°C $\pm$ 2°C	
RELATIVE HUMIDITY	<b>90% RH</b>

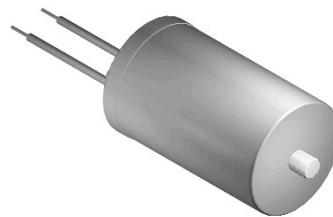
#### IGNITOR

#### CAPACITOR



40003364

Model: IGN-05



20uF/280V  
Min. 85°C