

.118"(3.0mm) Wire-to-Wire Crimp Terminal Housing

Specifications:

- Voltage rating: 250V AC(RMS) or DC
- Dielectric Strength: 1500V AC/minute
- Current rating:

- Insulation resistance: 1000MΩ min.
- Contact resistance: 10mΩ max.
- Temperature rise: 30°C max.
(carry rated current load)

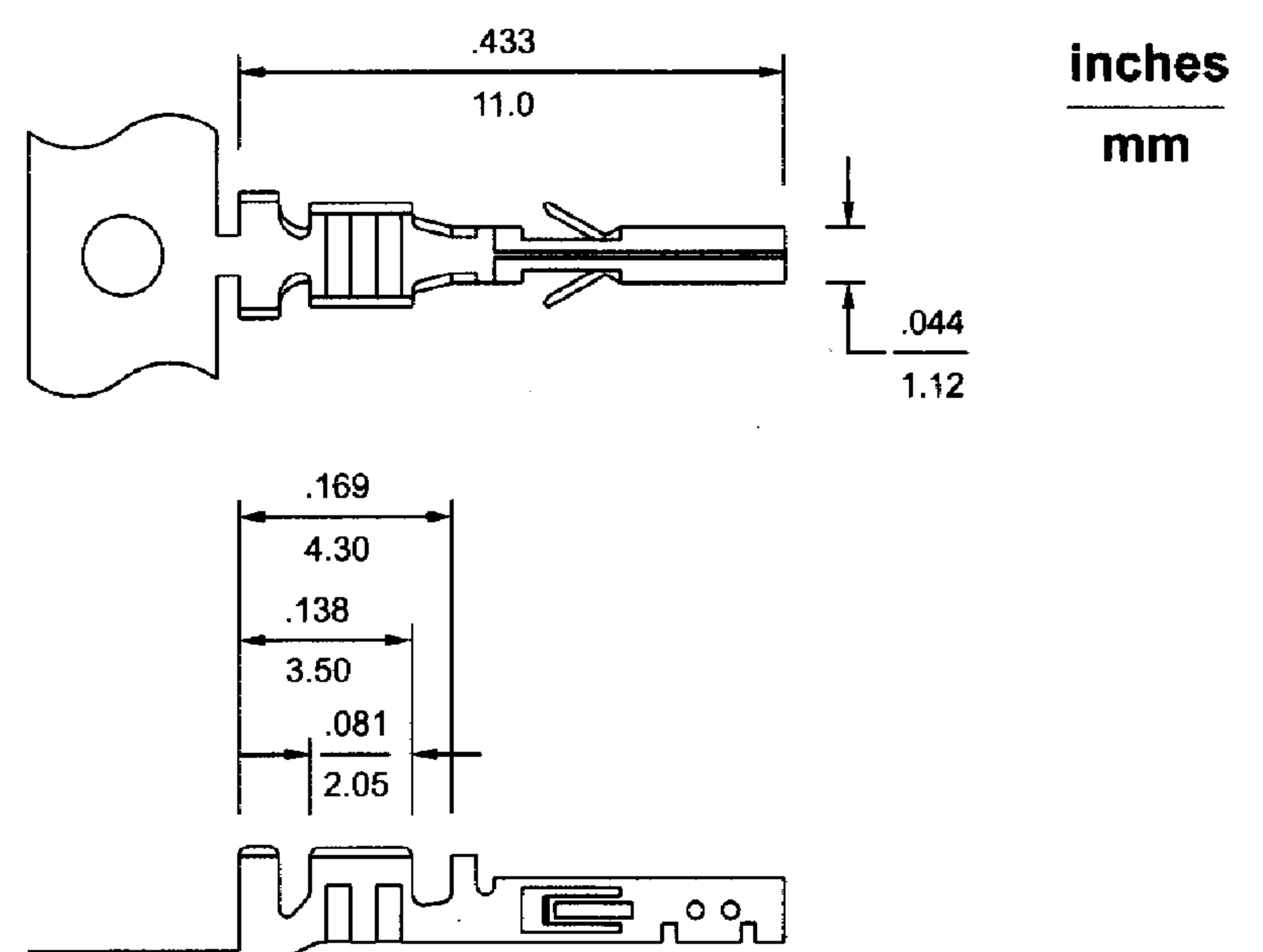
Wire size	#20	#22	#24	#26	#28	#30
Ampere	5 A	5 A	4 A	3 A	2 A	1 A

30001TF Female Crimp Terminal

- Material: Phosphor bronze
- Finished: Tin-plated or Gold flash
- Used in 30001HM-N series housings
- Wire range: AWG #20 ~ #30
- Thickness: 0.2mm

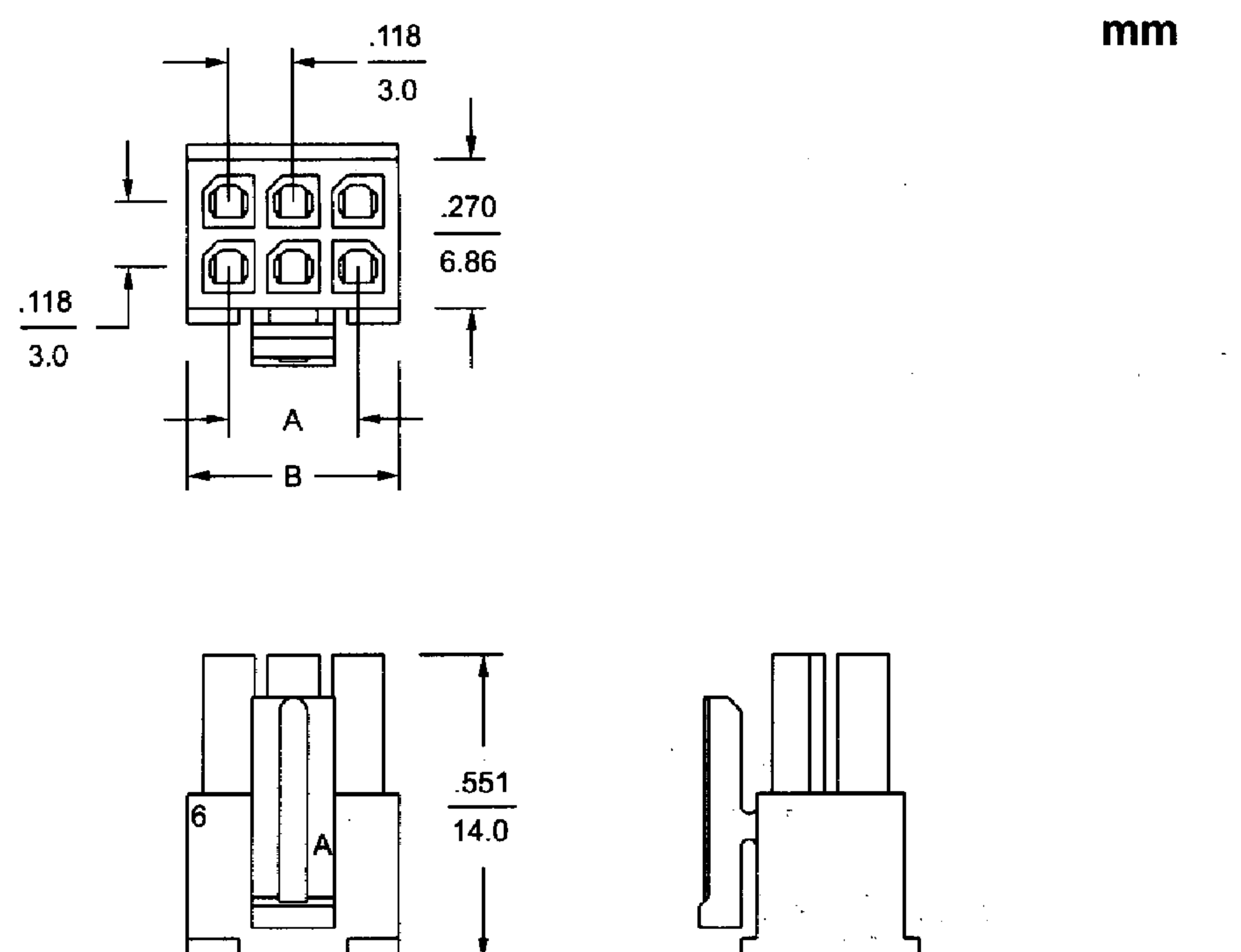
Ordering Information

Part No.	Finished	Wire size
30001TF-1	Tin-plated	#26 ~ #30 AWG
30001TF-2		#20 ~ #24 AWG
30001TFG-1	Gold flash	#26 ~ #30 AWG
30001TFG-2		#20 ~ #24 AWG



30001HM-N Dual Row Receptacle Housing

- Available in 2 thru 24 circuits
- Material: Polyester, UL 94V-0
- Standard color: Black
- Accepts 30001TF series terminals
- Mates with 30001HF-N series housing
- Mates with 30001W headers



Dimensional Information - in (mm)

Circuits	Dim. A	Dim. B	Circuits	Dim. A	Dim. B	Circuits	Dim. A	Dim. B
2		0.157 (4.0)	10	0.472 (12.0)	0.630 (16.0)	18	0.945 (24.0)	1.102 (28.0)
4	0.118 (3.0)	0.276 (7.0)	12	0.591 (15.0)	0.748 (19.0)	20	1.063 (27.0)	1.220 (31.0)
6	0.236 (6.0)	0.394 (10.0)	14	0.709 (18.0)	0.866 (22.0)	22	1.181 (30.0)	1.339 (34.0)
8	0.354 (9.0)	0.512 (13.0)	16	0.827 (21.0)	0.984 (25.0)	24	1.299 (33.0)	1.457 (37.0)