

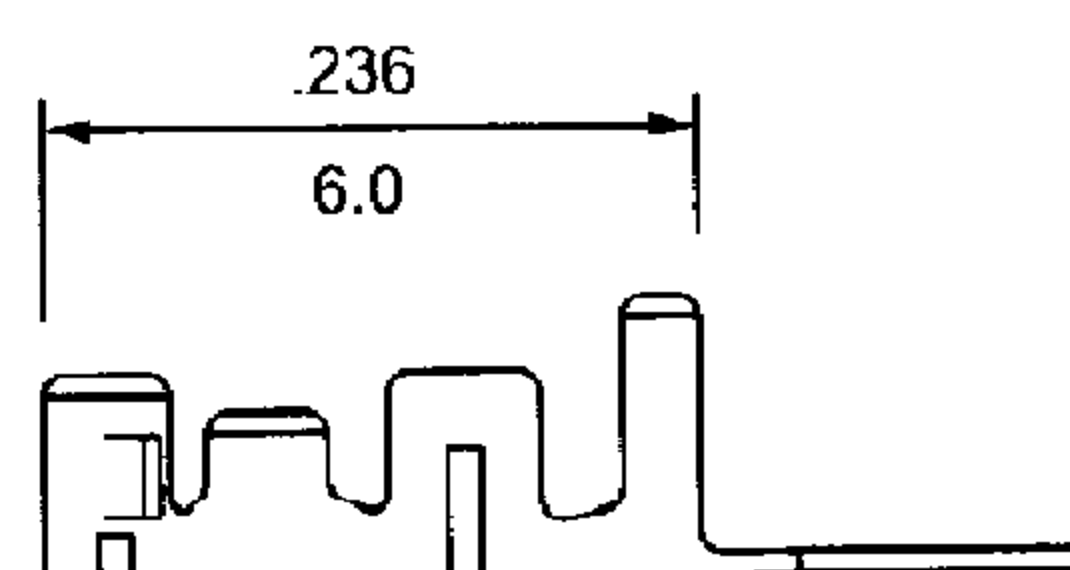
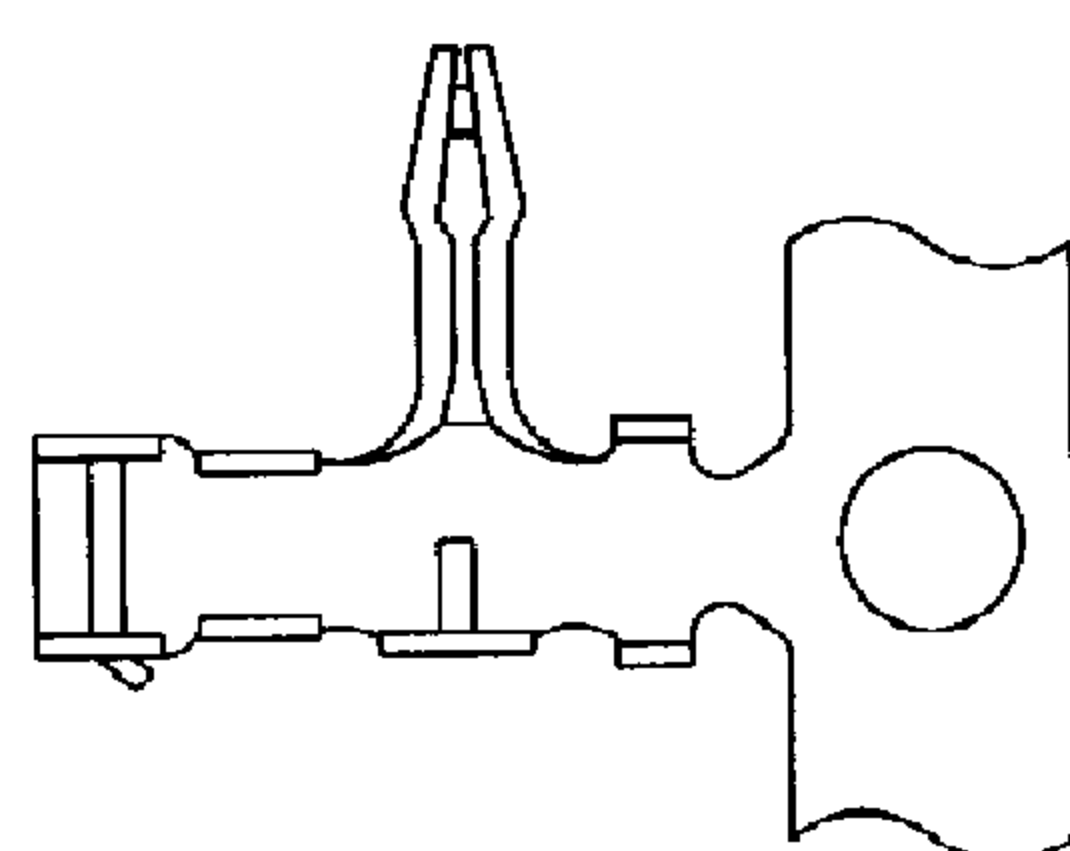
.098" (2.5mm) Board-In Type Connectors

Specifications:

- Current rating: 2A AC, DC
- Voltage rating: 250V AC, DC
- Withstanding voltage: 800V AC/minute
- Insulation resistance: 1000MΩ min.
- Temperature rise: -25 °C – 85 °C max. (including temperature rise)
- Applicable P.C. board thickness: .063" (1.6mm)

25010TR Series Crimp Terminal

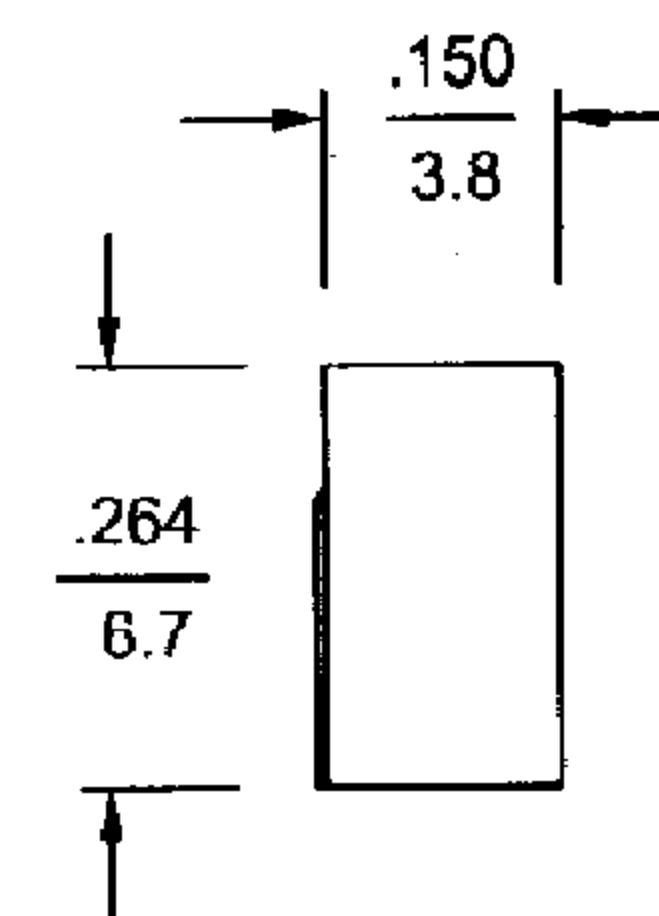
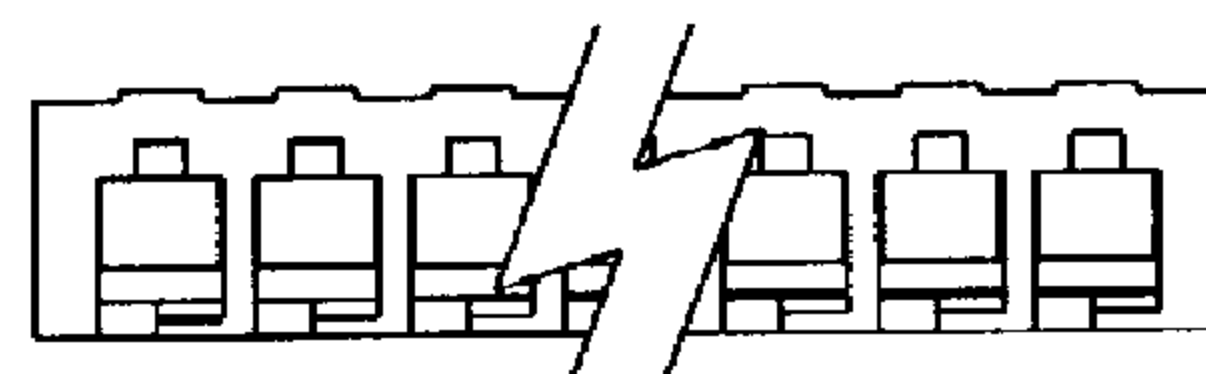
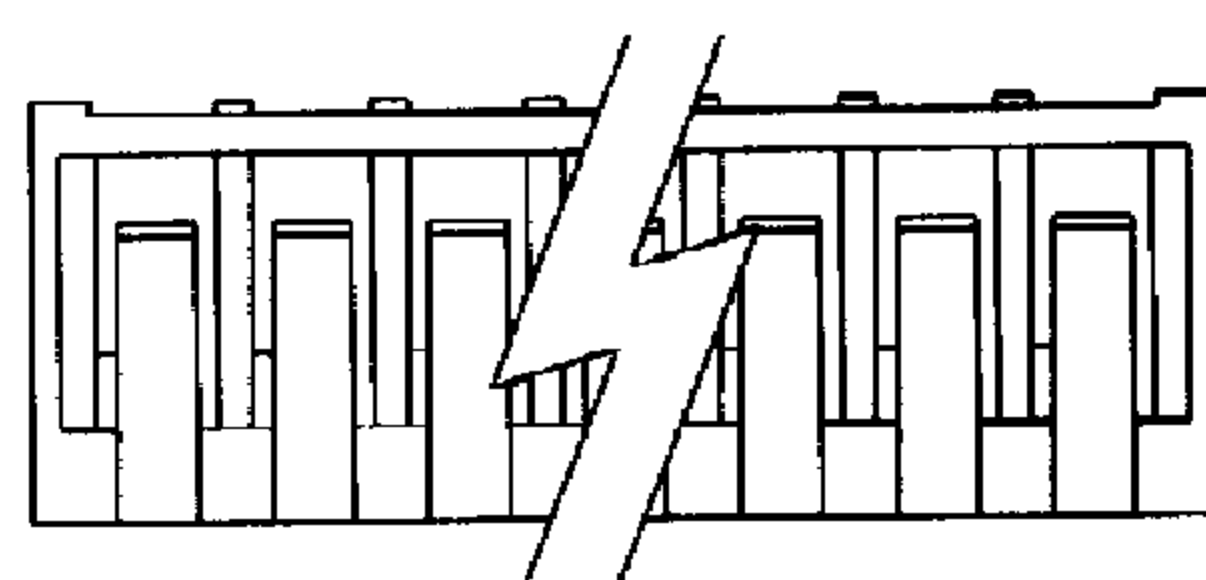
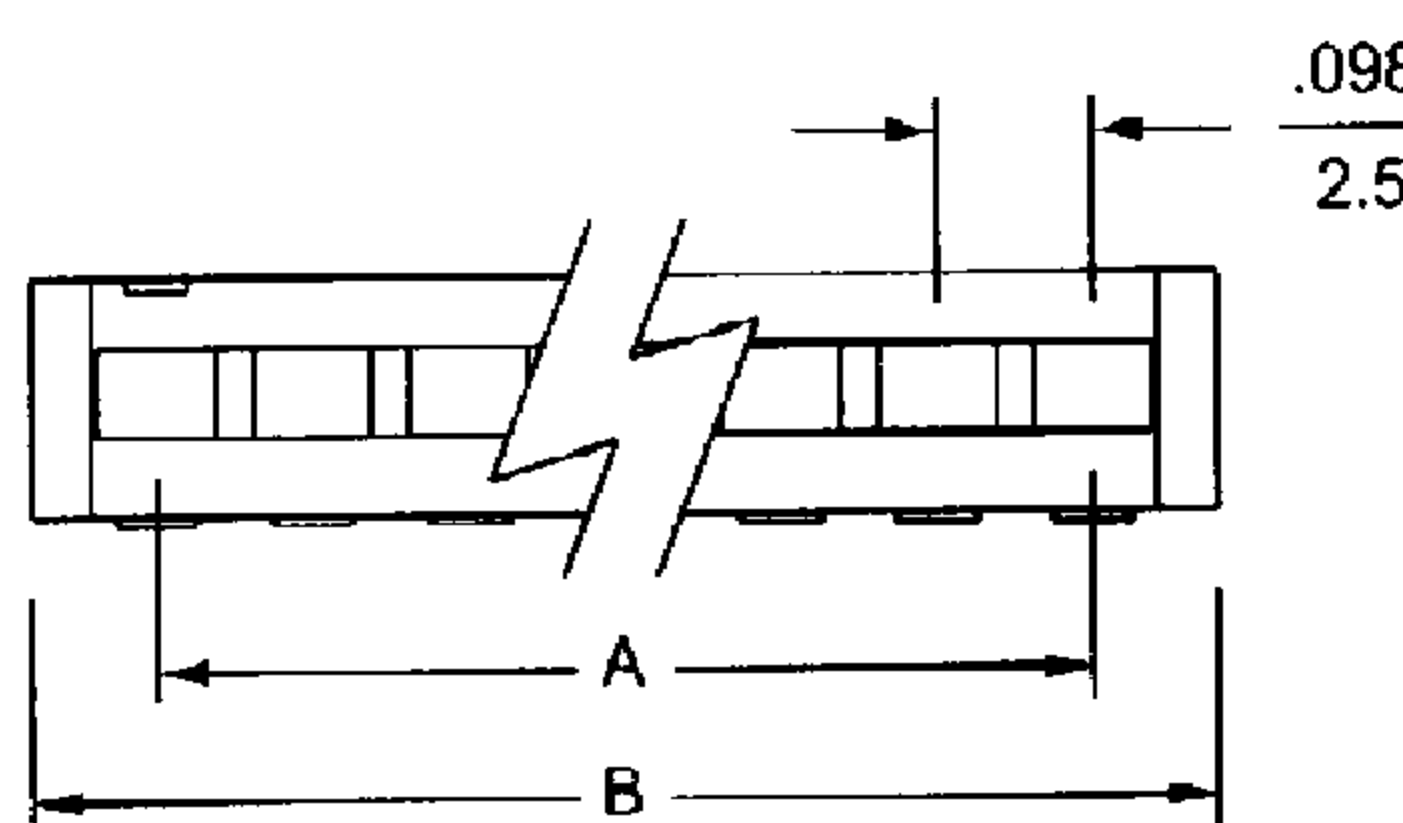
- Material: Brass
- Finished: Tin-plated
- Used in 25010HR-N series housing
- Wire range: AWG #24 ~ #28
- Thickness: 0.2mm



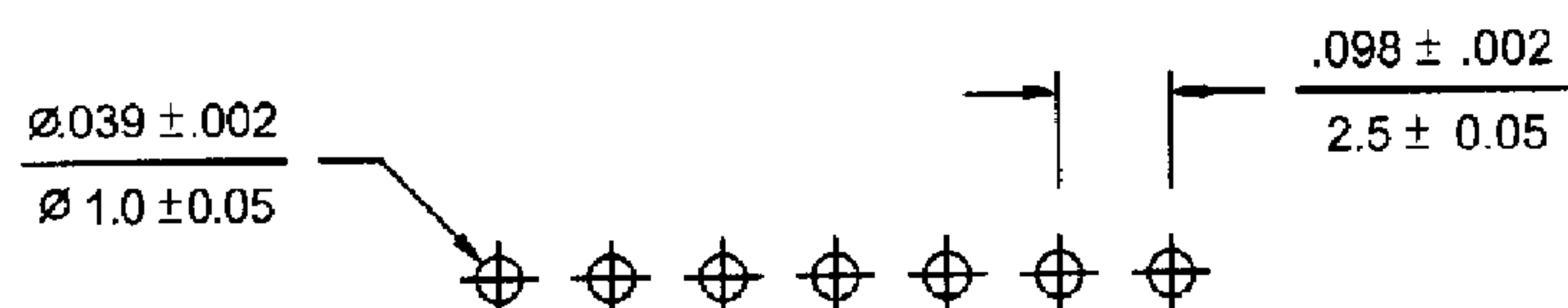
inches
mm

25010HR-N Series Crimp Terminal Housing

- 2 ~ 15 circuits available
- Material: UL 94V-0 nylon 66
- Accepts 25010TR terminal



inches
mm



P.C.B. hole dimensions

Dimensional Information - in (mm)

Circuits	Dim. A	Dim. B	Circuits	Dim. A	Dim. B	Circuits	Dim. A	Dim. B
2	0.098 (2.5)	0.256 (6.5)	7	0.591 (15.0)	0.748 (19.0)	12	1.083 (27.5)	1.240 (31.5)
3	0.197 (5.0)	0.354 (9.0)	8	0.689 (17.5)	0.846 (21.5)	13	1.181 (30.0)	1.339 (34.0)
4	0.295 (7.5)	0.453 (11.5)	9	0.787 (20.0)	0.945 (24.0)	14	1.260 (32.5)	1.437 (36.5)
5	0.394 (10.0)	0.551 (14.0)	10	0.886 (22.5)	1.043 (26.5)	15	1.378 (35.0)	1.535 (39.0)
6	0.492 (12.5)	0.650 (16.5)	11	0.984 (25.0)	1.142 (29.0)			