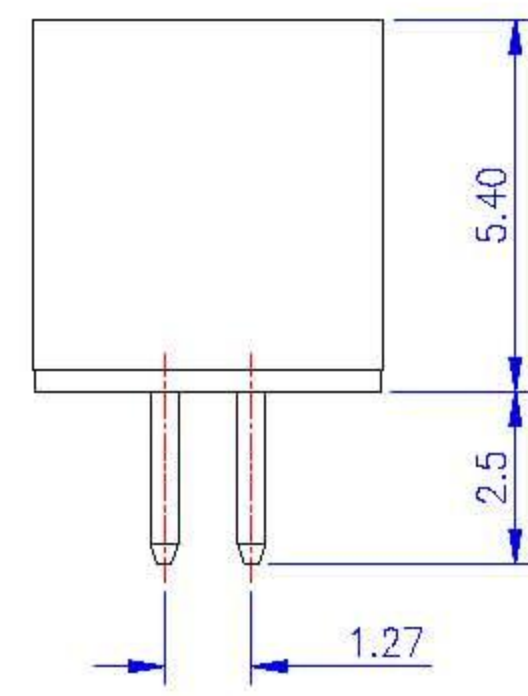
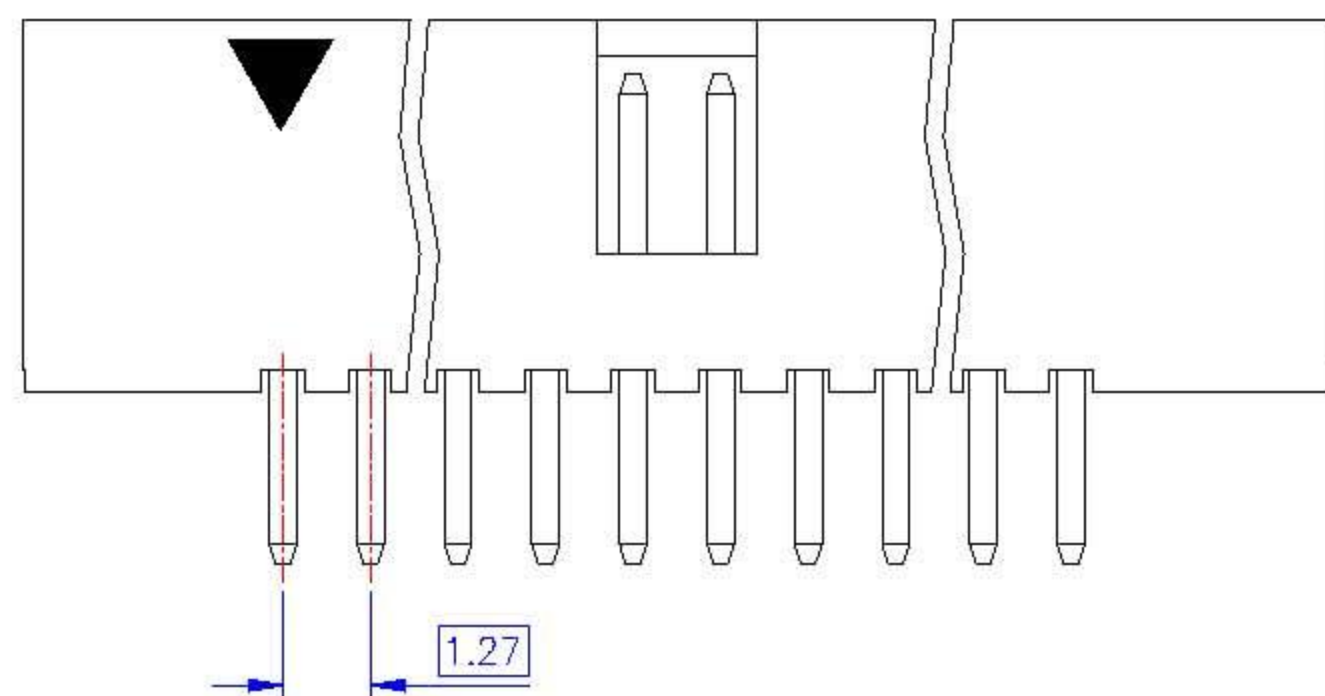
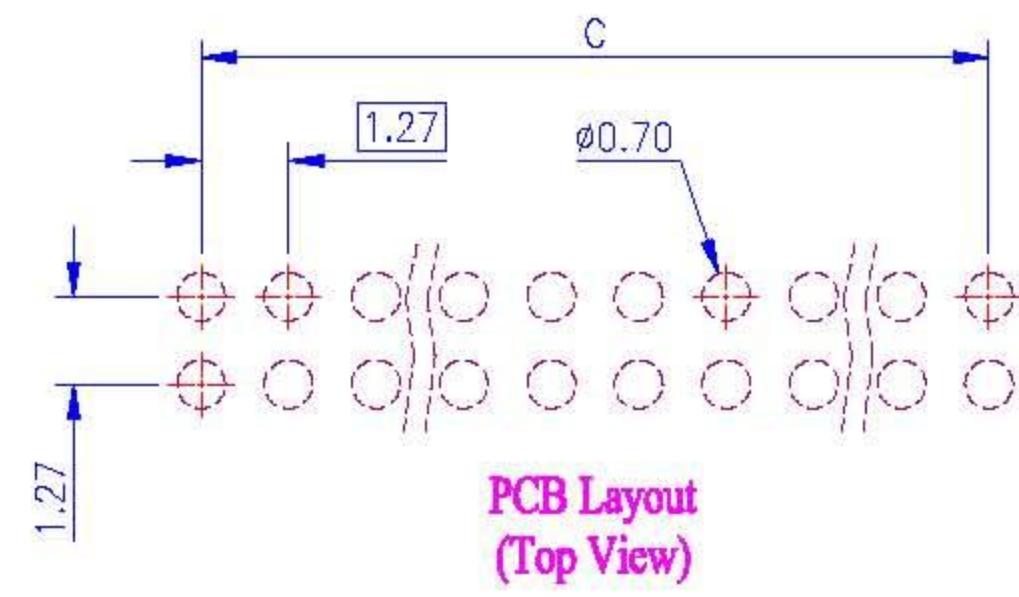
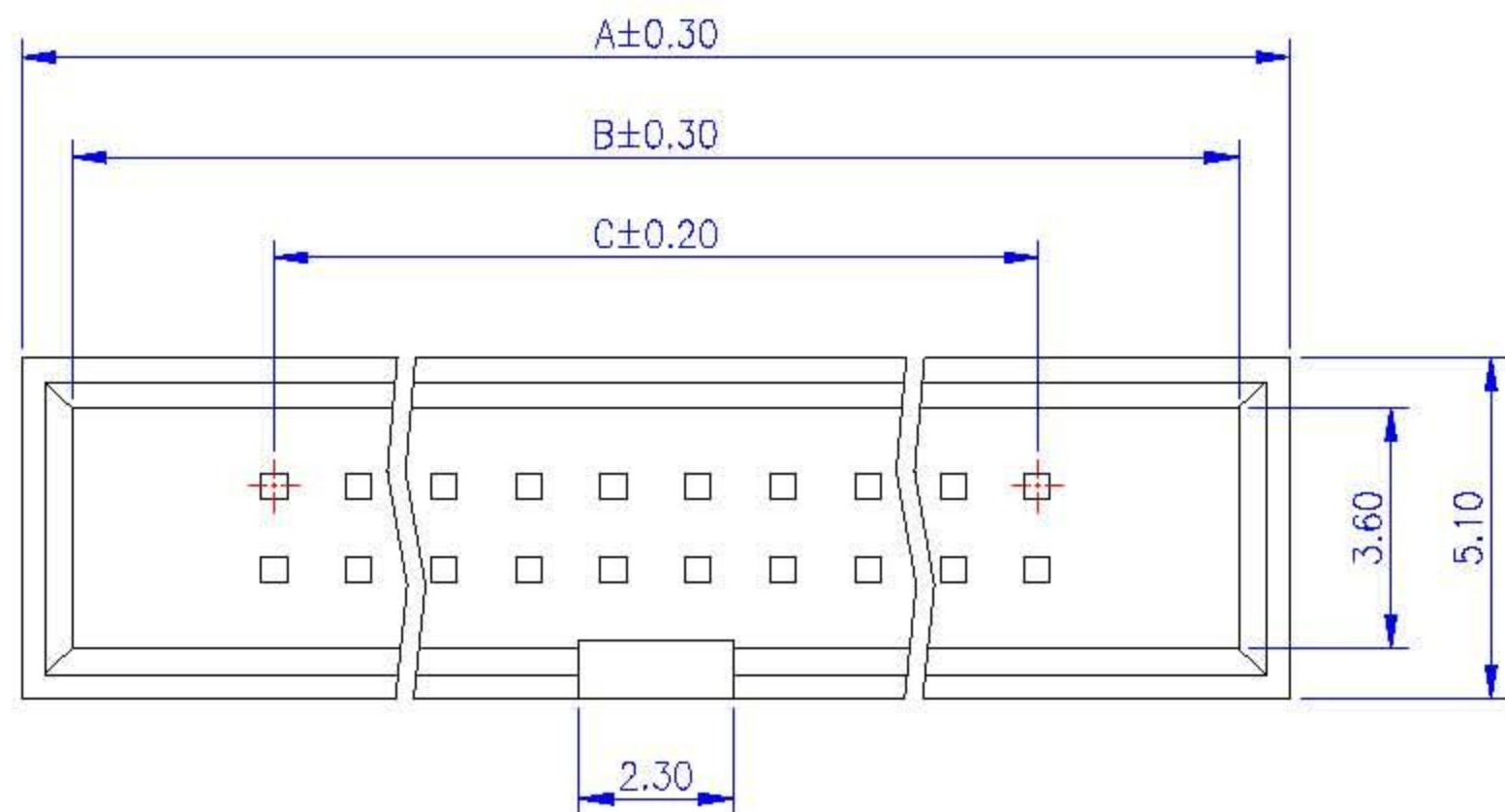


Rev.	Date	Description
A	2007/11/15	New Drawing



Order Information	Pos.	Dimensions		
		A	B	C
222604-00203	6	10.11	8.56	2.54
222604-00205	10	12.65	11.10	5.08
222604-00206	12	13.92	12.37	6.35
222604-00207	14	15.19	13.64	7.62
222604-00208	16	16.46	14.91	8.89
222604-00210	20	19.00	17.45	11.43
222604-00212	24	21.54	19.99	13.97
222604-00213	26	22.81	21.26	15.24
222604-00214	28	24.08	22.53	16.51
222604-00215	30	25.35	23.80	17.78
222604-00217	34	27.89	26.34	20.32
222604-00220	40	31.70	30.15	24.13
222604-00222	44	34.24	32.69	26.67
222604-00225	50	38.05	36.50	30.48
222604-00230	60	44.40	42.85	36.83
222604-00232	64	46.94	45.39	39.37
222604-00234	68	49.48	47.93	41.91
222604-00240	80	57.10	55.55	49.53
222604-00250	100	69.80	68.25	62.23

Material and Finish	Electrical Characteristics	Mechanical Characteristics	Reference	Scale	Drawn By	Checked By	Approved By
1. Housing: LCP (UL94V-0), Black. 2. Terminal: Sq. 0.40mm Copper Alloy, Gold Plating.	1. Current Rating: 1.0 Amp. Max.. 2. Dielectric Withstand Voltage: 600V AC RMS for 60Seconds. 3. Insulation Resistance: 1000M Ohms Min. at 500V DC.	1. Operating Temperature: -55°C~+105°C	0.0 ±0.30 0.00 ±0.20 0.000 ±0.10	1:1	Bob	Jim	Alex
			Drawing No. HD222604-2				
			Title: 1.27*1.27mm Box Header PCB Mount Vertical, Dual Rows (for IDC)				