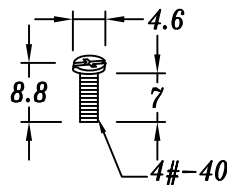
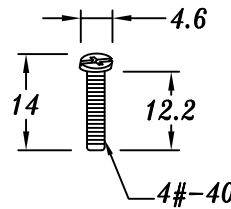


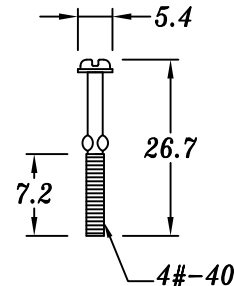
(SN-4\*5)X2



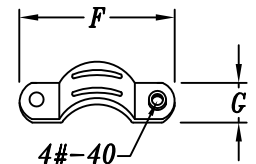
(STF-4\*7)X2



(STF-4\*12.5)X2



(STC-4\*25)X2



(SG-D09~50)X2

	A±0.2	B±0.2	C±0.2	D±0.1	E±0.1	F	G
PH05-09S	33.0	20.0	20.4	25.0	7.0	14.0	5.7
PH05-15S	41.3	20.0	21.2	33.3	10.0	19.0	5.5
PH05-25S	55.0	21.0	21.0	47.0	10.0	26.5	6.5
PH05-37S	72.0	20.0	20.0	63.5	14.0	30.0	7.0
PH05-50S	69.6	20.3	20.0	61.0	14.0	30.0	7.0

**ENN** Chang Enn Co., Ltd.

NO.410, FU-TEH 1ST ROAD,  
SHIJR, TAIPEI COUNTY  
221, TAIWAN, R.O.C.

TEL: 886-2-26945824

FAX: 886-2-26946971

TITLE

PARTS NO.

DWG, NO.

D-SUB Hood  
(AGP Type)  
For Short Screw

PH05-09~50S

GENERAL  
TOLERANCE

DIM:  
X. ±0.30  
X.X ±0.20  
X.XX±0.10

DRAWN

CHECK

APPROVE

SCALE

DATE

DATE

DATE

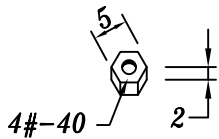
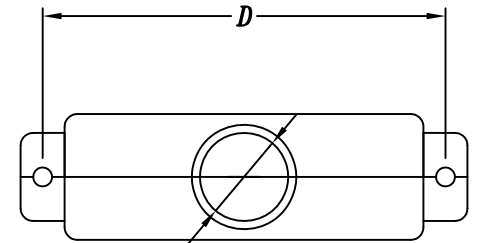
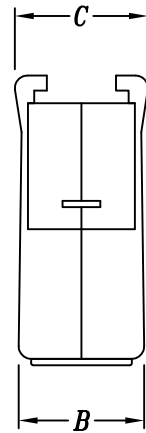
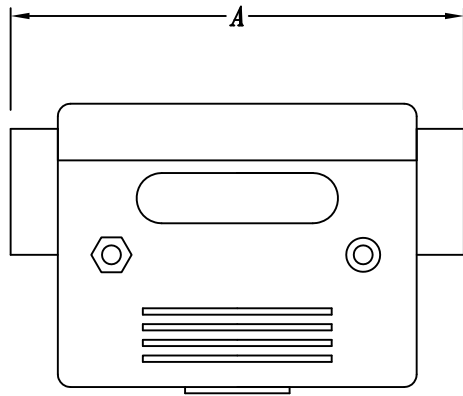
FREE

UNIT

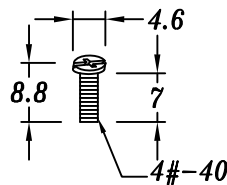
MM REV. B

93/12/01

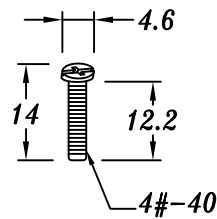
102/11/14



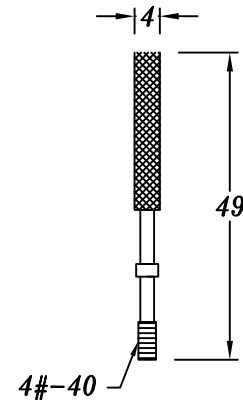
(SN-4\*5)X2



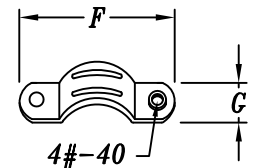
(STF-4\*7)X2



(STF-4\*12.5)X2



(STL-4\*49)X2



(SG-D09~50)X2

	A±0.2	B±0.2	C±0.2	D±0.1	E±0.1	F	G
PH05-09L	33.0	20.0	20.4	25.0	7.0	14.0	5.7
PH05-15L	41.3	20.0	21.2	33.3	10.0	19.0	5.5
PH05-25L	55.0	21.0	21.0	47.0	10.0	26.5	6.5
PH05-37L	72.0	20.0	20.0	63.5	14.0	30.0	7.0
PH05-50L	69.6	20.3	20.0	61.0	14.0	30.0	7.0

**ENN** Chang Enn Co., Ltd.

NO.410, FU-TEH 1ST ROAD,  
SHIJR, TAIPEI COUNTY  
221, TAIWAN, R.O.C.

TEL: 886-2-26945824

FAX: 886-2-26946971

TITLE

PARTS NO.

DWG, NO.

D-SUB Hood  
(AGP Type)  
For Long Screw

PH05-09~50L

GENERAL  
TOLERANCE

DIM:  
X. ±0.30  
X.X ±0.20  
X.XX±0.10

DRAWN

CHECK

APPROVE

SCALE

DATE

DATE

DATE

FREE

UNIT

MM

REV.

B

93/12/01

102/11/14