

3.96mm(.156") HOUSING

MATERIAL

Insulator: Nylon 66 UL 94V-0

Color: White

SPECIFICATIONS

Temperature range: -25°C ~ +85°C

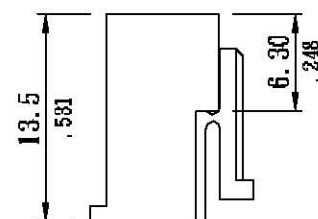
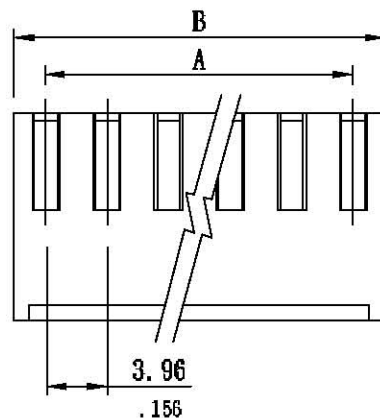
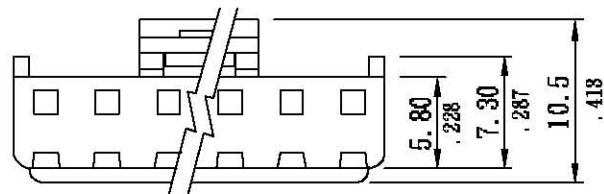
Current rating: 7.0A

Voltage rating: 250V AC

Dielectric withstand voltage: 1500V AC

Insulation resistance: 1000 MΩ min.

Contact resistance: 0.02Ω max.



Dimensional Information

Circuits	Dim. A	Dim. B	Circuits	Dim. A	Dim. B
2	3.96(0.156)	8.04(0.317)	9	31.68(1.247)	35.88(1.413)
3	7.92(0.312)	12.10(0.476)	10	35.84(1.403)	39.84(1.569)
4	11.88(0.468)	15.96(0.628)	11	39.60(1.559)	43.74(1.722)
5	15.84(0.624)	20.00(0.787)	12	43.56(1.715)	47.74(1.880)
6	19.80(0.780)	23.90(0.941)	13	47.52(1.871)	51.70(2.035)
7	23.76(0.935)	27.90(1.098)	14	51.48(2.027)	55.66(2.191)
8	27.72(1.091)	31.92(1.257)			

長榮有限公司 Chang Enn Co., Ltd.

Site URL: <http://www.pc-connector.com>

CHECKED

APPROVED

SCALE: 1:2

REV NO

DATE

DESCRIPTION

BY

CHECKED

TOLERANCE UNLESS NOTED

UNIT: mm(in.)

DRAWN NAME

DATE

CAD NO

LINEAR±

.0 ±0.20(.012)

.00 ±0.20(.008)

.000±0.10(.004)

DWG NAME

PNIH4-H

89.05.10

3920

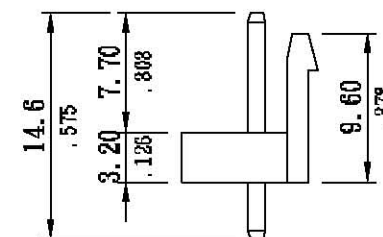
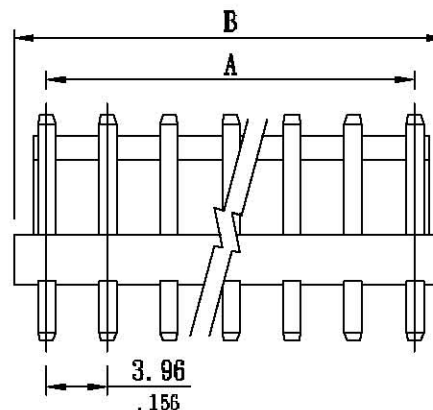
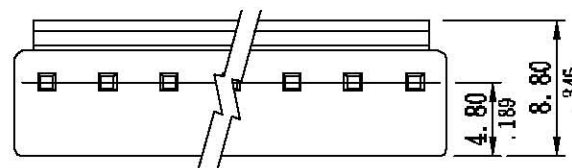
3.96mm(.156") WAFER 180°

MATERIAL

Insulator: Nylon 66 UL 94V-0
 Color: White
 Contact: Brass 1.14mm(.045") square wire pins
 Plating: Tin plated

SPECIFICATIONS

Temperature range: -25°C ~ +85°C
 Current rating: 7.0A
 Voltage rating: 250V AC
 Dielectric withstand voltage: 1500V AC
 Insulation resistance: 1000 MΩ min.
 Contact resistance: 0.02Ω max.



Dimensional Information

Circuits	Dim. A	Dim. B	Circuits	Dim. A	Dim. B
2	3.96(0.156)	7.92(0.312)	9	31.68(1.247)	35.88(1.412)
3	7.92(0.312)	11.92(0.469)	10	35.64(1.403)	39.90(1.571)
4	11.88(0.468)	15.84(0.624)	11	39.60(1.559)	43.84(1.726)
5	15.84(0.624)	19.84(0.781)	12	43.56(1.715)	47.92(1.887)
6	19.80(0.780)	23.80(0.937)	13	47.52(1.871)	51.72(2.036)
7	23.76(0.935)	27.88(1.098)	14	51.48(2.027)	55.92(2.202)
8	27.72(1.091)	31.74(1.250)			

長榮有限公司 Chang Enn Co., Ltd.
 Site URL: <http://www.pc-connector.com>

CHECKED	APPROVED	SCALE: 1:2	REV NO	DATE	DESCRIPTION	BY	CHECKED	TOLERANCE UNLESS NOTED
		UNIT: mm(in.)						.0 ±0.20(, 012)
DRAWN NAME	DATE	CAD NO						.00 ±0.20(, 008)
	89.05.11	3921 1-1						.00 ±0.10(, 004)

DWG NAME PNIH4-WS

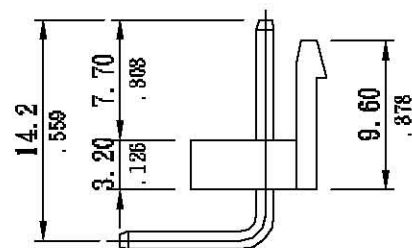
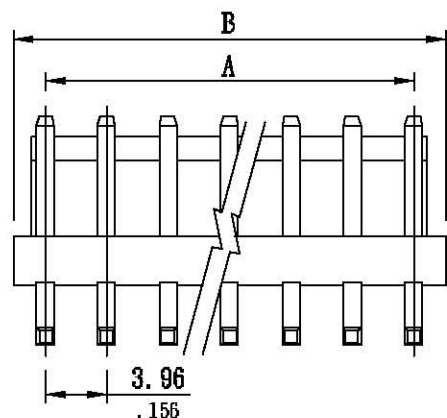
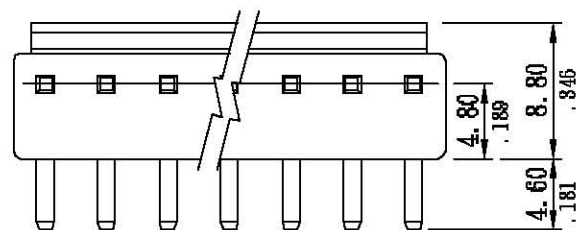
3.96mm(.156") WAFER 90°

MATERIAL

Insulator: Nylon 66 UL 94V-0
 Color: White
 Contact: Brass 1.14mm(.045") square wire pins
 Plating: Tin plated

SPECIFICATIONS

Temperature range: -25°C ~ +85°C
 Current rating: 7.0A
 Voltage rating: 250V AC
 Dielectric withstand voltage: 1500V AC
 Insulation resistance: 1000 MΩ min.
 Contact resistance: 0.02Ω max.



Dimensional Information

Circuits	Dim. A	Dim. B	Circuits	Dim. A	Dim. B
2	3.96(0.156)	7.92(0.312)	9	31.68(1.247)	35.86(1.412)
3	7.92(0.312)	11.92(0.469)	10	35.64(1.403)	39.90(1.571)
4	11.88(0.468)	15.84(0.624)	11	39.60(1.559)	43.84(1.726)
5	15.84(0.624)	19.84(0.781)	12	43.56(1.715)	47.92(1.887)
6	19.80(0.780)	23.80(0.937)	13	47.52(1.871)	51.72(2.036)
7	23.76(0.935)	27.88(1.098)	14	51.48(2.027)	55.92(2.202)
8	27.72(1.091)	31.74(1.250)			

長榮有限公司 Chang Enn Co., Ltd.
 Site URL: <http://www.pc-connector.com>

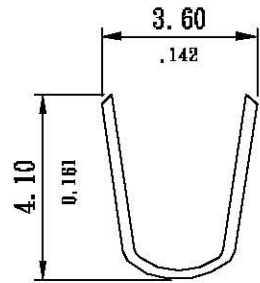
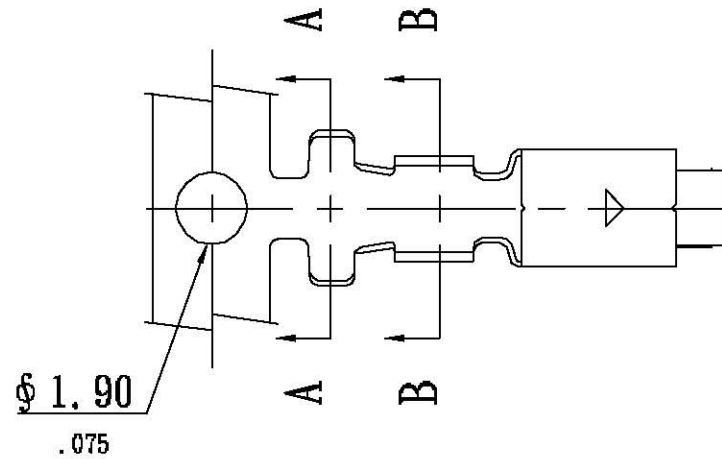
CHECKED	APPROVED	SCALE: 1:2	REV NO	DATE	DESCRIPTION	BY	CHECKED	TOLERANCE UNLESS NOTED
		UNIT: mm(.in.)						.3 ±.03(.012)
DRAWN NAME	DATE	CAD NO						.30 ±.03(.012)
	89.05.12	3921 1-2						.0025(.10(.004))

DWG NAME PNIH4-WR

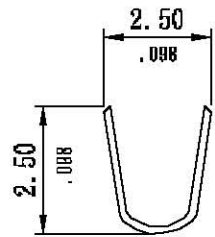
TERMINAL

SPECIFICATIONS

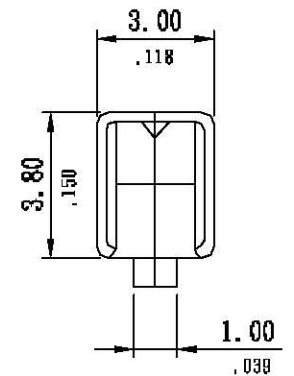
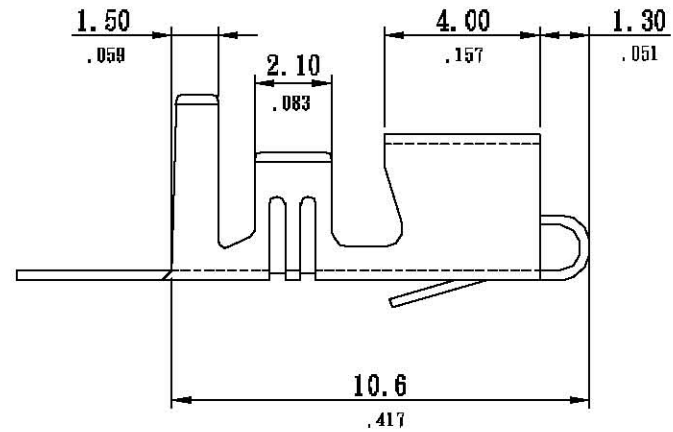
Material : Brass
Thickness : 0.25mm
Plating : Tin plated
Applicable wire : AWG18 ~ AWG24
Insulation O. D. : 2.80mm max



SECTION: A-A



SECTION: B-B



長榮有限公司 Chang Enn Co., Ltd.
 Site URL: <http://www.pc-connector.com>

DWG NAME PNIH4-T

CHECKED	APPROVED	SCALE: 1:5	REV NO	DATE	DESCRIPTION	BY	CHECKED	TOLERANCE UNLESS NOTED	
		UNIT: mm(in.)							.3 ±0.20(.012)
DRAWN NAME	DATE	CAD NO							.30 ±0.20(.008)
	90.05.15	3923-T							.30 ±0.10(.004)