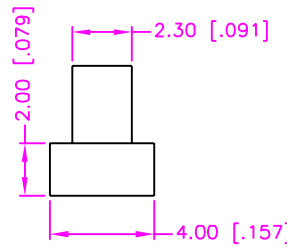
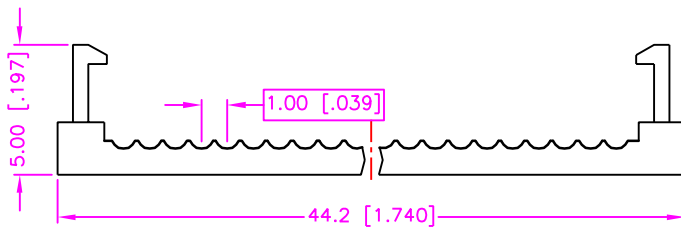
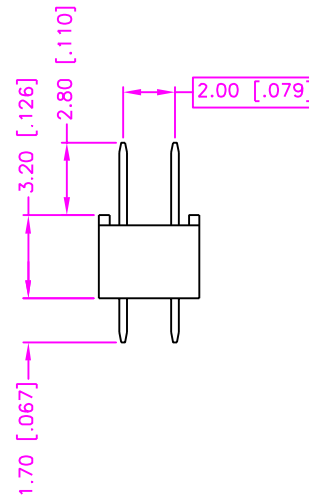
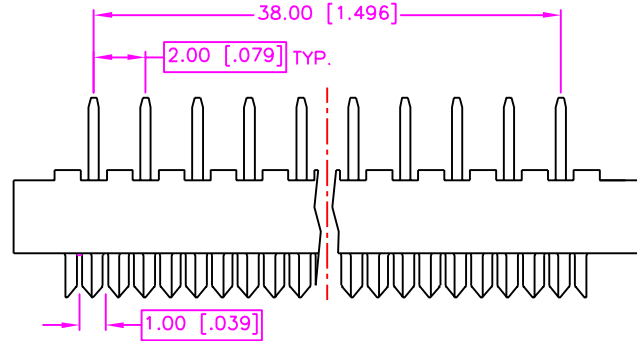
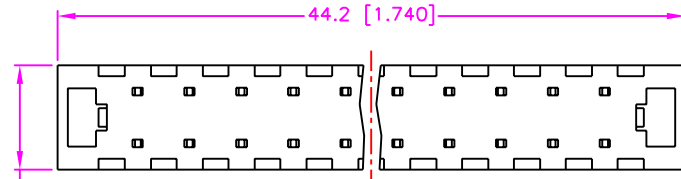


REV.	DESCRIPTION	DATE
—	RELEASE	Jun. 28, 2001
1		
2		



### MATERIALS

1. HOUSING : P.B.T. (UL 94V-0), BLACK.
2. TERMINAL : PHOSPHOR BRONZE, TIN PLATING.  
(t=0.30mm)

### SPECIFICATION

1. CURRENT RATING : 1 AMP. MAX.
2. DIELECTRIC WITHSTANDING VOLTAGE :  
800V AC R.M.S. FOR ONE MINUTE.
3. INSULATION RESISTANCE : 1000M OHMS MIN.  
AT 500V DC.
4. OPERATING TEMPERATURE : -55°C TO +105°C.

TOLERANCE .0=±.30[.012] .00=±.20 [.008] .000=±.XXX .0000=±. ANG.=±3'		DRAWER	Chang Enn Co., Ltd.
UNITS : mm [inch]		CHECK	
SCALE NONE		APP'D	NAME IDC CABLE CONNECTOR 2.00mm PITCH TRANSITION PLUG, 40PINS
SIZE A4		PRODUCT SPEC.	DRAW NO. PNH03
SHEET 1 OF 1		REV. A	