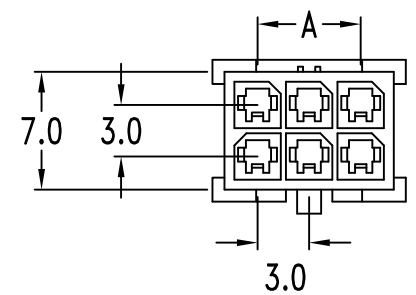


REV	ECN NO.	DESCRIPTION	DATE	APP'D
C/D		RELEASE TO PRODUCTION		Paul

Features:

- Available in 2 thru 24 circuits
- Material: UL 94V-0 Nylon 66
- Accepts 4312-MT Terminal
- Mates with 4312-2xxHME Housing
- Standard color: Black
- Recommended panel thickness: 1.57mm
- RoHS



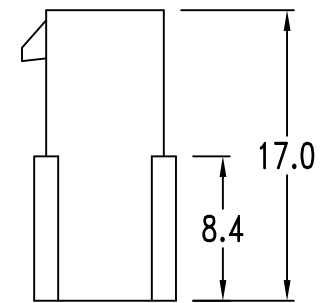
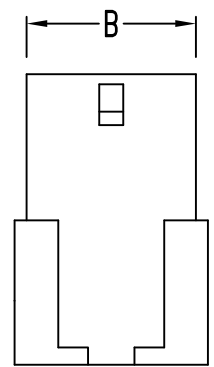
Specifications:

- Current rating:

Wire size	# 20	# 22	# 24	# 26	# 28	# 30
Ampere	5 A	5 A	4 A	3 A	2 A	1 A

- Voltage rating: 250V AC(RMS) or DC
- Insulation resistance: 1000MΩ Min.
- Dielectric strength: 1500V AC/minute
- Temperature rise: 30°C Max.
(carry rated current load)

PANEL OPENING



Dimensional Information

Circuits	Dim. A	Dim. B	Dim. C	Dim. D	Circuits	Dim. A	Dim. B	Dim. C	Dim. D
2		4.0	4.21	7.90	14	18.0	22.0	22.20	25.88
4	3.0	7.0	7.21	10.90	16	21.0	25.0	25.20	28.88
6	6.0	10.0	10.21	13.89	18	24.0	28.0	28.20	31.88
8	9.0	13.0	13.21	16.89	20	27.0	31.0	31.22	34.87
10	12.0	16.0	16.21	19.89	22	30.0	34.0	34.22	37.87
12	15.0	19.0	19.21	22.89	24	33.0	37.0	37.22	40.87


Order Information

P N : 4 3 1 2 - 2 x x H F M

Serial Type:

No. of Contact:
02~24 PIN

M: Without Mtg. Ears
F: Female
H: Housing

TOLERANCE	APPROVALS	DATE	 易昕企業有限公司 LEAMAX ENTERPRISE CO., LED.
	.000 ± 0.08 (mm)	DRAWN Daniel	
.00 ± 0.25 (mm)	CHK'D Huang	01-04-15	TITLE: .118*(3.00mm) Dual Row Plug Housing
.0 ± 0.4 (mm)	APP'D Chen	25-05-15	DWG NO.4312-HFB
	UNTS mm	SCALE 1:1	SIZE: A4
			SHEET 1 OF 1
			REV. C/D