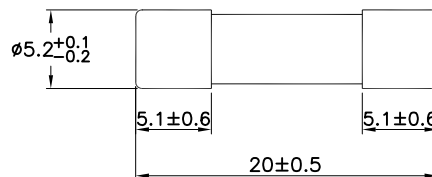


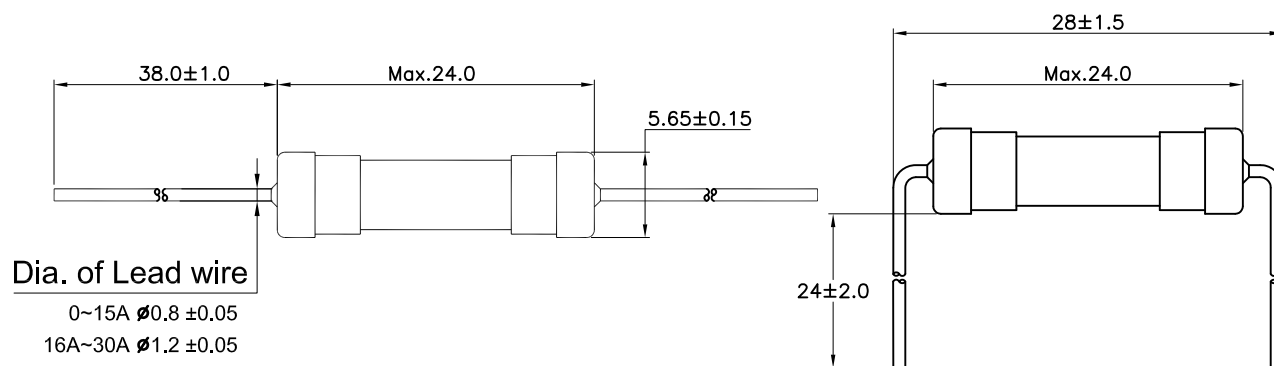
# Dimensions in mm

## MMC52



## MMC52-PA

## MMC52-PR



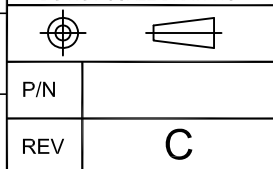
Rated Current	Breaking capacity	Rated Voltage
100mA	@125V/AC 10KA @250V/AC 35A	125V/250V
125mA		125V/250V
160mA		125V/250V
200mA		125V/250V
250mA		125V/250V
300mA		125V/250V
315mA		125V/250V
400mA		125V/250V
500mA		125V/250V
600mA		125V/250V
630mA	125V/250V	
700mA	125V/250V	
800mA	125V/250V	
1A	@125V/AC 10KA @250V/AC 100A	125V/250V
1.25A		125V/250V
1.5A		125V/250V
1.6A		125V/250V
2A		125V/250V
2.5A		125V/250V
3A		125V/250V
3.15A		125V/250V
3.5A		125V/250V
4A		125V/250V
5A	@125V/AC 10KA @250V/AC 200A	125V/250V
6A		125V/250V
6.3A		125V/250V
7A		125V/250V
8A		125V/250V
10A	@125V/AC 10KA	125V
12A		125V
13A		125V
15A	@32V/AC,DC 1000A	32V
16A		32V
20A		32V
25A		32V
30A		32V

Test Specification according to Standard UL 248-1,14

### Electrical Characteristic

Rated Current	1.0 I <sub>n</sub>	1.35 I <sub>n</sub>	2 I <sub>n</sub>	
	Min.	Max.	Max.	Min.
I <sub>n</sub>				
100mA-30A	4 h	3600 S	120 S	3 S

UNLESS OTHERWISE SPECIFIED  
DIMENSIONS ARE IN MM  
TOLERANCE  
DECIMALS ANGULAR  
X ± 0.5 ± 2°  
XX ± 0.25  
DO NOT SCALE DRAWING



CUSTOMER NO.
DRAWN BY Jason
CHECKED BY
APPROVED BY 鄭文和
DATE 2011.3.8
SCALE

<b>JENN FENG ELECTRIC INDUSTRIAL CO., LTD.</b>
TITLE Miniature Cartridge Fuse5.2X20mm Slow Blow Type
PART NO. MMC52 MMC52-PA / PR
DRAWING NO. AA05012501