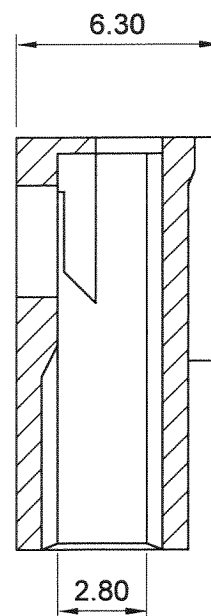
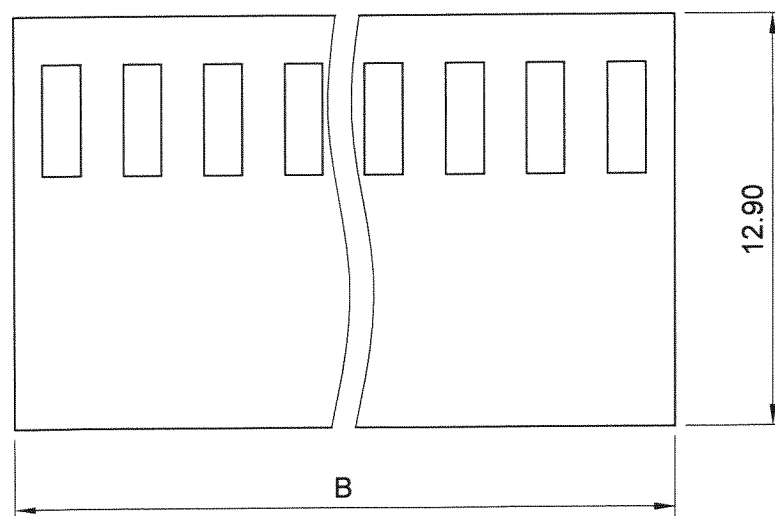
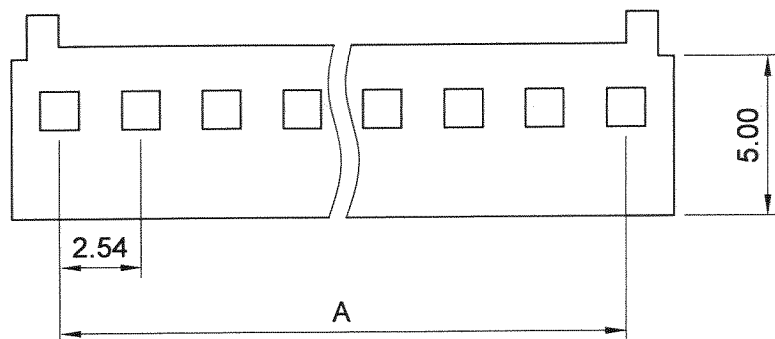


RoHS
Compliant
2002/95/EC



SPECIFICATIONS

CURRENT RATING : 3A AC, DC

VOLTAGE RATING : 250 AC MAXIMUM

OPERATING TEMP : -25°C ~ + 85°C

CONTACT RESISTANCE : 20 mΩ MAX

INSULATION RESISTANCE : 1000 MΩ MIN

TERMINAL MATERIAL : BRASS/ TIN-PLATED/ GOLD-PLATED

MATERIAL : NYLON 66, UL94V-2

POLES	DIMENSION mm	
	A	B
2	2.54	5.64
3	5.08	8.16
4	7.62	10.72
5	10.16	13.30
6	12.70	15.78
7	15.24	18.40
8	17.78	20.80
9	20.32	23.50
10	22.86	26.00
11	25.40	28.50
12	27.94	31.00
13	30.48	33.50
14	32.02	36.00
15	35.56	38.50
16	38.10	41.20
17	40.64	43.60
18	43.18	46.32
19	45.72	48.80
20	48.26	51.34

JAWS 兆旭股份有限公司
JAWS CO., LTD.
7F-1, NO.31, Lane 169, Kang Ning Street,
Hsichih, Taipei Hsien, Taiwan.
TEL: 886-2-2692-2898
FAX: 886-2-2692-2618
Http://www.jaws.com.tw

THIRD ANGLE
PROJECTION

DESIGN UNITS
mm INCH

TITLE:
2.54mm WIRE-TO-BOARD HOUSING

GENERAL TOLERANCES:

±0.30

DRAWN	游熾瑩	DATE	97/09/23
CHECK	郭坤學	DATE	97.9.23
APPROVE	陳世官	DATE	97.9.24

SIZE: A4
SCALE: FREE
SHEET: 1/1
CPN NO.:
DAN NO.: S9709-045

PARTS NO.: 250E-xxP
DWG NO.: JAWS-SOP-250E001
REV. 01