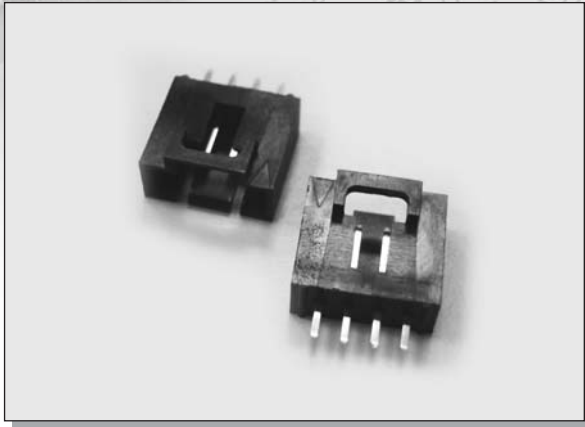


# C-TEK 2.54MM PITCH MOLEX WIRE TO BOARD



## MATERIAL

HOUSING : PBT 94V-0.

CONTACT : BRASS.

## SPECIFICATION

CURRENT RATING : 3.5A AC / DC.

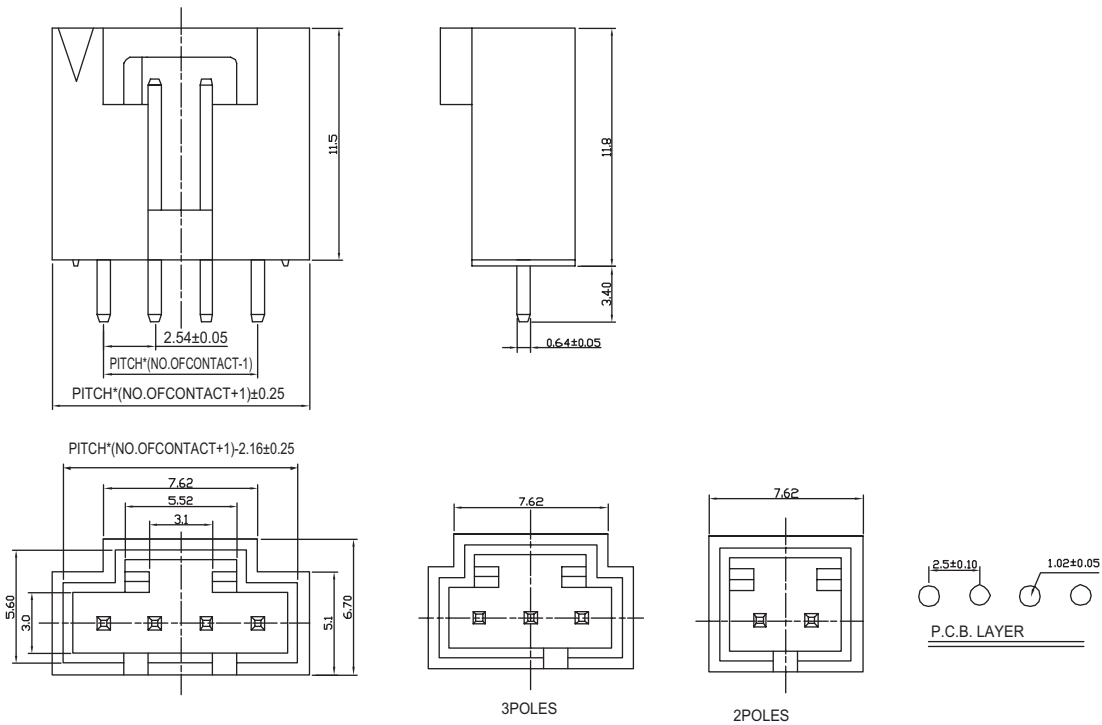
VOLTAGE RATING : 250V AC / DC.

CONTACT RESISTANCE : 1000V AC / MIN.

OPERATING TEMPERATURE : -25°C TO +85°C

INSULATION RESISTANCE : 1000 MEGOHMS MIN.

## DIMENSIONS



## HOW TO ORDER

SERIES NO.	CONTACT NO.	CONTACT TYPE	PLATING	COLOR
<b>3007</b>	<b>4</b> 2 - 18	<b>R</b> R: R/A DIP S: STRAIGHT DIP	<b>T</b> G: GOLD PLASH OVER NICKEL PLATED T: TIN PLATED	<b>B</b> B: BLACK G: GREEN U: BLUE R: RED