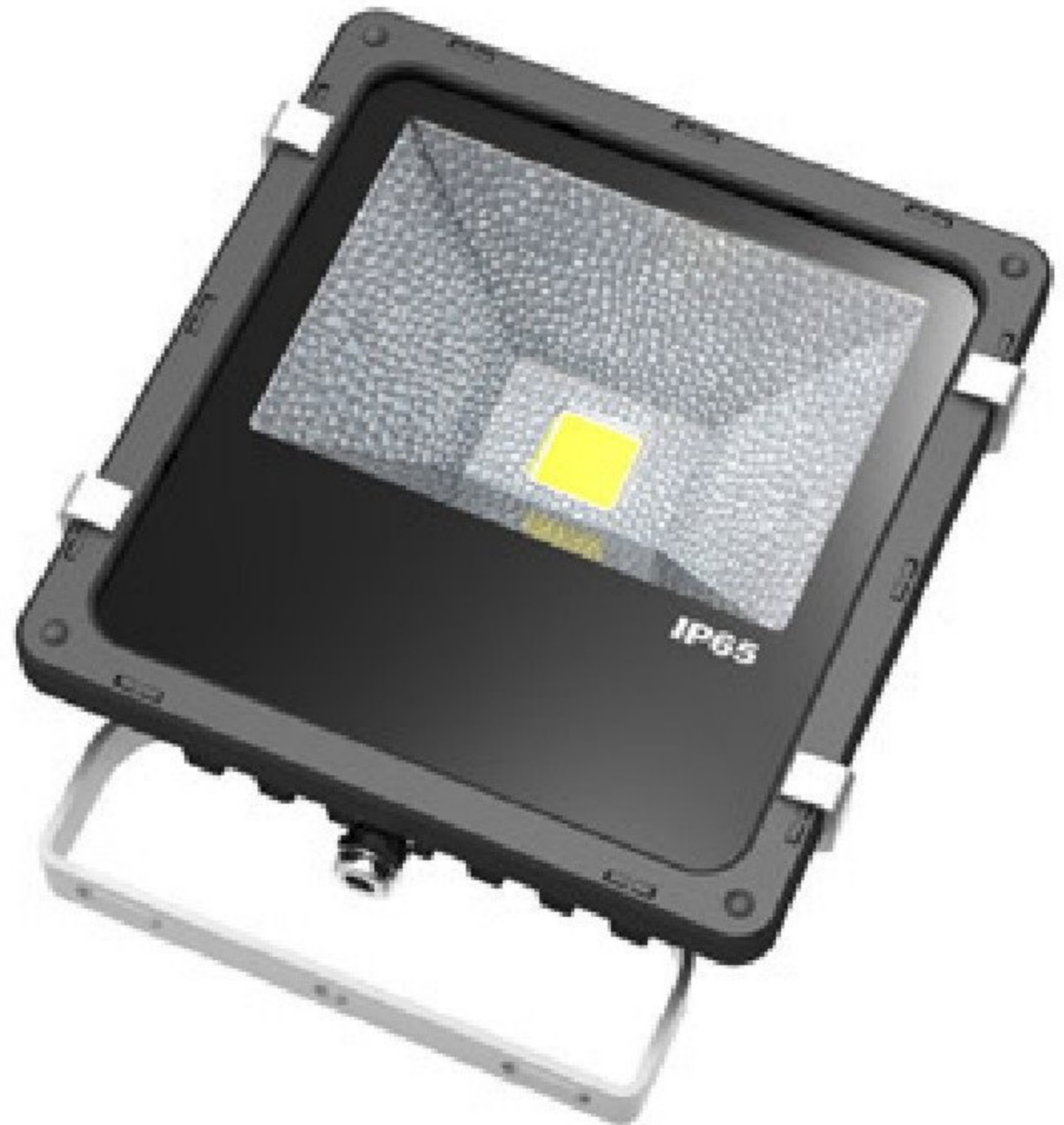
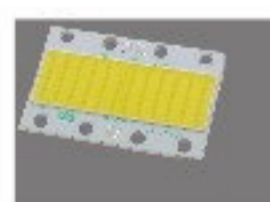


CSWSPL-30W

CS Wide Spot Light Series



Features



1. Features a high-power COB LED light-source using PI base MCPCB with excellent durability and stability at high temperature.



2. LED light source performed excellent light quality in color.



3. Combine the high-efficiency heat conductive LED module and luminaire to make the luminaire the perfect heat-sink itself.

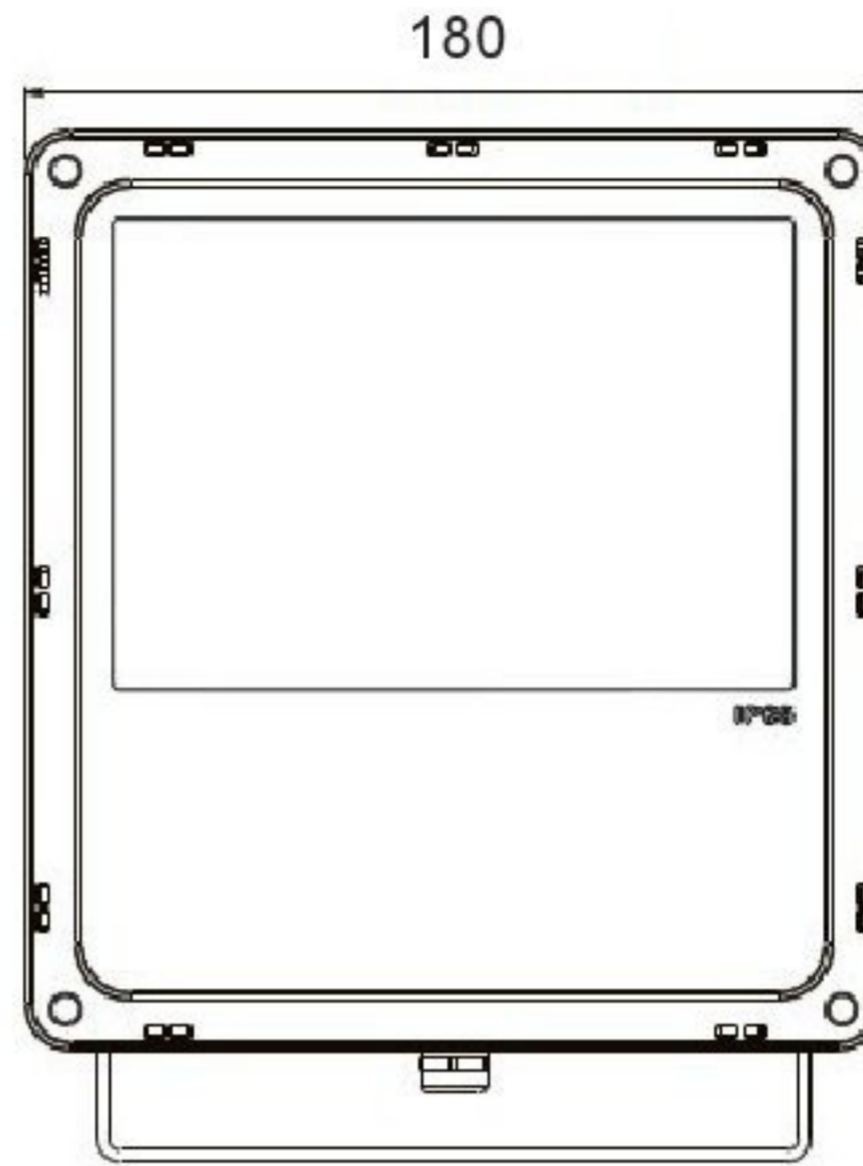
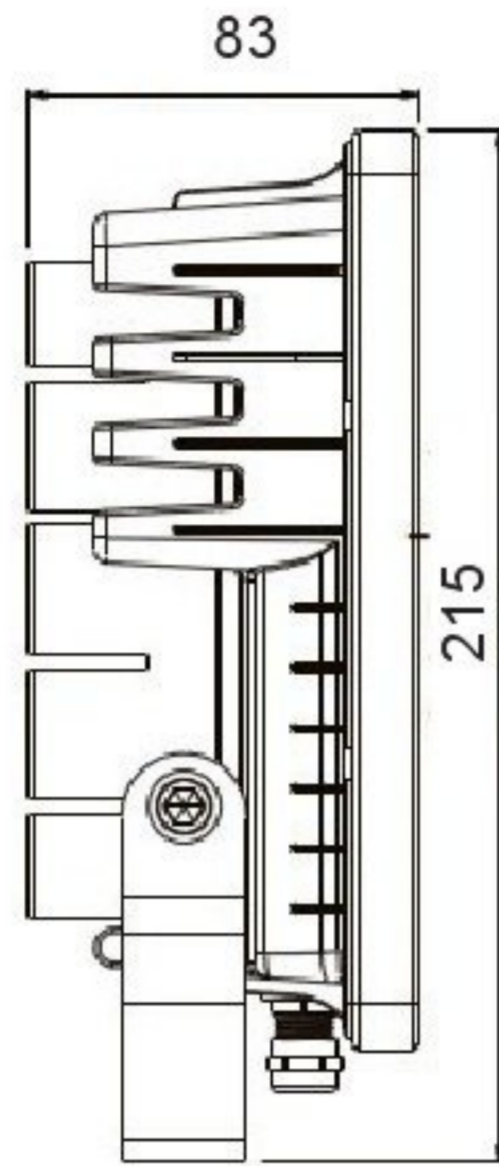


4. All the specification of LED module can be customized.



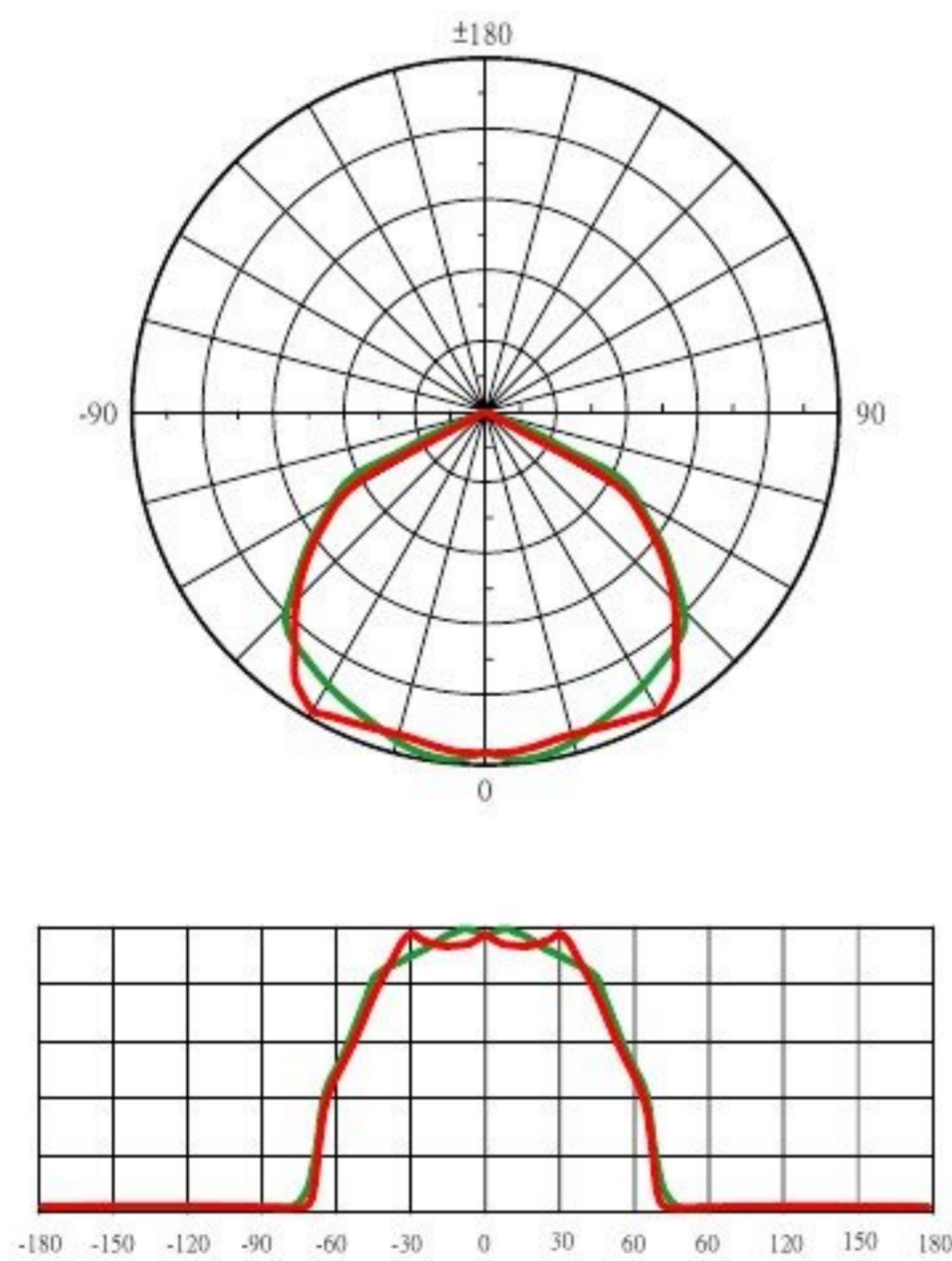
5. Energy saving and long life time with high efficacy light-source and power inside.

Product Dimension



Unit: mm
Tolerance: 5mm

Photometric Data



Height	illuminance	Diameter
1. m	898.04 lx	145.76 cm
3. m	99.30 lx	437.55 cm
6. m	24.98 lx	875.14 cm
9. m	11.08 lx	1305.73 cm

Height illuminance Beam Angle: 115° Diameter

- Notes :
- 1. Angle has $\pm 5^\circ$ tolerance.
 - 2. Flux is measured with an accuracy of $\pm 10\%$.
 - 3. Flux may decay 10% under thermal balance condition.
 - 4. Some of data are calculated from reference measurement result.

Specification

Items	Value	Unit	Remarks
Power	30	W	Total
Input Voltage	90 - 264	VAC	
Color Temperature	2800 - 6500	K	Customizable
Luminous Efficacy (Light Source)	> 110	lm/W	@ 6500K
Luminous Efficacy (Total)	> 80	lm/W	@ 6500K with luminaire and power
Color Rendering Index	> 70, Max. 90	---	Customizable
Color Difference Δuv	+0.004 ~ -0.004		
Operating Temperature	-30 ~ 40	°C	
Weight	1.47	Kg	
Warranty	2 years warranty		

Power consumption and efficacy has 10% tolerance.
Higher CRI or lower CCT will brings lower efficacy.

Package Information

- Weight : 1.78 Kg

