

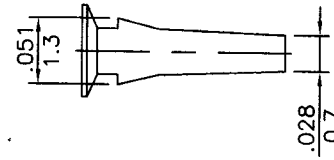
.100"(2.54mm) pitch male crimp terminal



CT328B Series

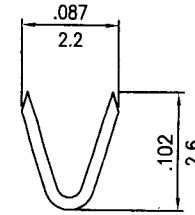
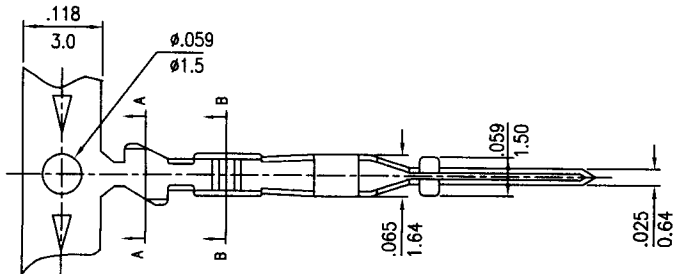
- * Material: Brass
- * Finished: Tin-plated 60u" or gold-plated
- * Used in CH328, CH330 series housings
- * Wire range: AWG#22~#28
- * Insulation O.D: 1.70mm(max)
- * Thickness: 0.2mm
- * Q'TY: 10,000 pcs/reel

Polarizing Plug

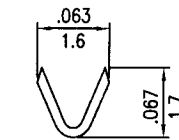
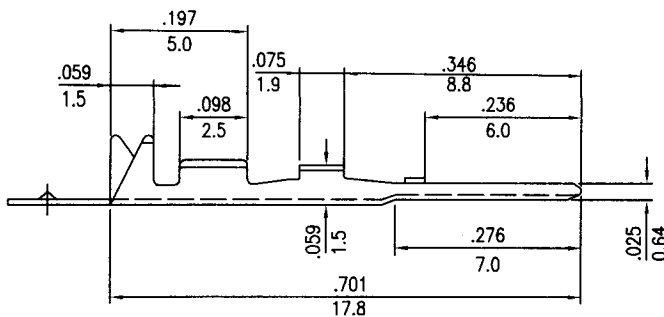


P/N : CK328X

inches
mm



A-A SECTION



B-B SECTION

.100"(2.54mm) pitch Wire to Board Connectors

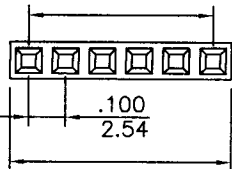
CH328 Series

- * Poles: 1-40
- * Material: NORYL UL 94V-1 BLACK
- * Suitable CT328 or CT328B series terminal
- * Mates with CW328 series Header

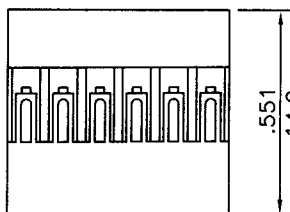
CH330 Series

- * Poles: 4-80
- * Material: NORYL UL 94-V1 ,BLACK
- * Suitable CT328 or CT328B series terminal
- * Mates with CH330 FOR CW330 series

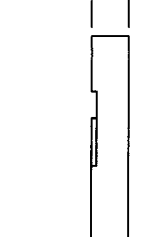
(NO. OF CONTACTS-1)X2.54



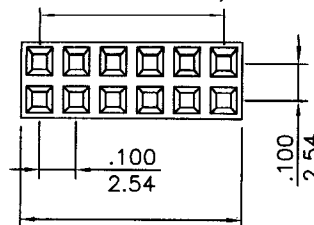
(NO. OF CONTACTS)X2.54+0.2



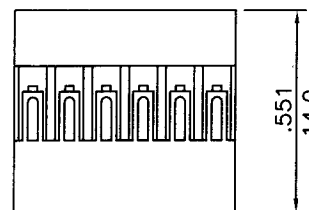
.098
2.5



(NO. OF CONTACTS-1)X2.54



(NO. OF CONTACTS)X2.54+0.2



.201
5.1

