

# .118"(3.0mm) Pitch Single row Wire-to-Wire Connectors

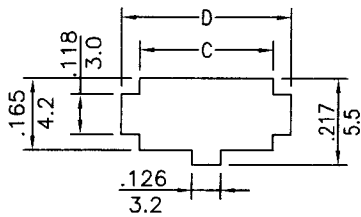
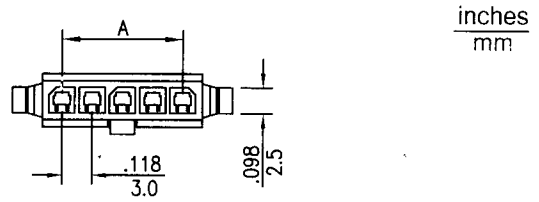


## CH3020S Series

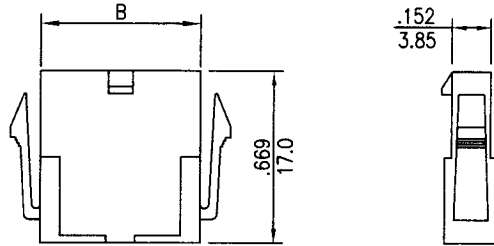
- \* Poles:2-12
- \* Material:Polyester, UL94V-0 BLACK
- \* Suitable CT3020T series terminal
- \* Mates with CH3025S-XX series housings

### Specifications

- \* Current rating: 5A AC, DC
- \* Voltage rating: 250V AC, DC
- \* Temperature range: -25°C~+85°C
- \* Insulation resistance: 1,000MΩ min.
- \* Withstand voltage: 1,500V AC/minute



panel hole dimensions

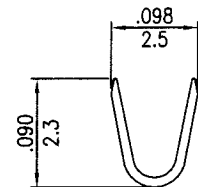
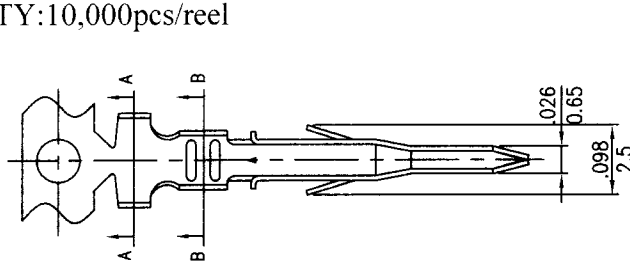


CIRCUITS	PART NO.	DIMENSION in.(mm)			
		A	B	C	D
2	CH3020S-02	0.118(3.0)	0.268(6.8)	0.283(7.2)	0.429(10.9)
3	CH3020S-03	0.236(6.0)	0.386(9.8)	0.402(10.2)	0.547(13.9)
4	CH3020S-04	0.354(9.0)	0.504(12.8)	0.520(13.2)	0.666(16.9)
5	CH3020S-05	0.472(12.0)	0.622(15.8)	0.638(16.2)	0.784(19.9)
6	CH3020S-06	0.591(15.0)	0.740(18.8)	0.756(19.2)	0.902(22.9)
7	CH3020S-07	0.709(18.0)	0.858(21.8)	0.874(22.2)	1.020(25.9)
8	CH3020S-08	0.827(21.0)	0.976(24.8)	0.992(25.2)	1.138(28.9)
9	CH3020S-09	0.945(24.0)	1.094(27.8)	1.110(28.2)	1.256(31.9)
10	CH3020S-10	1.063(27.0)	1.213(30.8)	1.228(31.2)	1.374(34.9)
11	CH3020S-11	1.181(30.0)	1.331(33.8)	1.346(34.2)	1.492(37.9)
12	CH3020S-12	1.299(33.0)	1.449(36.8)	1.465(37.2)	1.610(40.9)

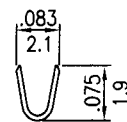
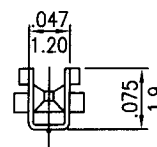
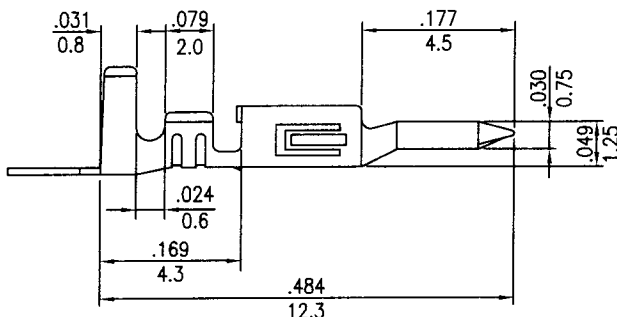
# .118"(3.0mm) pitch crimp terminal

## CT3020T Series

- \* Material:Phosphor bronze
- \* Finished:Tin-plated
- \* Used in CH3020S-XX series housings
- \* Wire range:AWG#22~#28
- \* Thickness:0.20mm
- \* Q'TY:10,000pcs/reel



A-A SECTION



B-B SECTION