

.118"(3.0mm) Pitch Dual row Wire-to-Wire Connectors

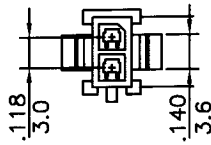
- * Part No: CH3020X-2X1
- * Material: Polyester, UL94V-0
- * Suitable CT3020 series terminal
- * Mates with CH3025 series

Specifications

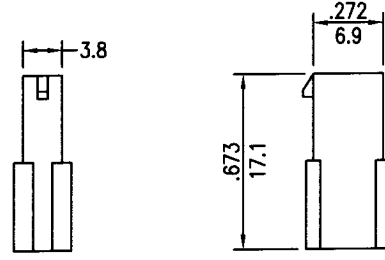
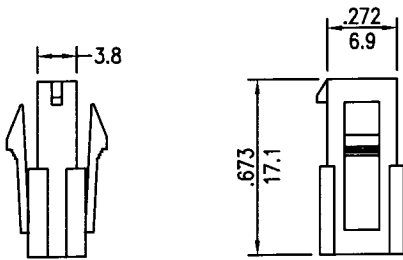
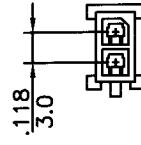
- * Current rating: 3A AC, DC
- * Voltage rating: 250V AC, DC
- * Temperature range: -25°C~+85°C
- * Insulation resistance: 1,000M Ω min.
- * Withstand voltage: 1,500V AC/minute

inches
mm

CH3020-2X1



CH3020N-2X1

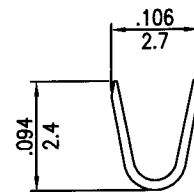
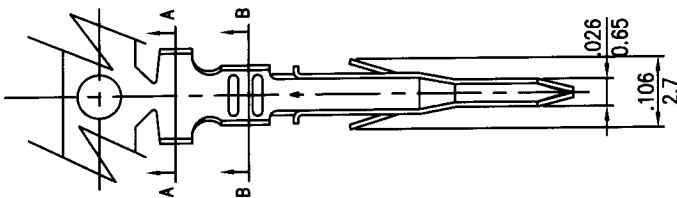


.118"(3.0mm) pitch crimp terminal

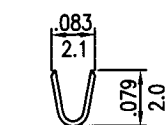
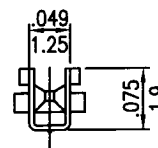
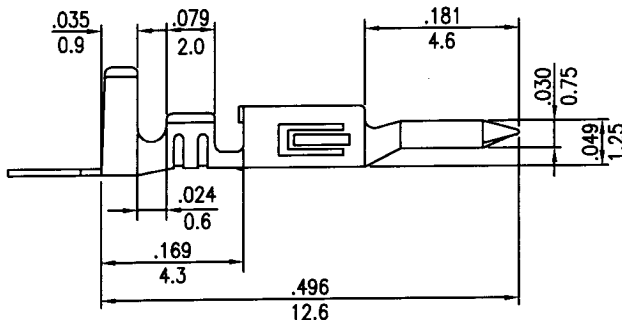
CT3020 Series

- * Material: Phosphor bronze
- * Finished: Tin-plated 60u"
- * Used in CH3020 series housings
- * Wire range: AWG#26~#30 H: AWG#20~#24
- * Thickness: 0.20mm
- * Q'TY: 5,000pcs/reel

inches
mm



A-A SECTION



B-B SECTION