

REV	ECN. NO.	APPD.
A	DC04039	T. K MENG 8/7/2004

NOTES:

- 1.DIMENSION SHALL BE INTERPRETED PER ANSI Y14.5M-1994
- 2.THE RETENTION FORCE IS 0.25 kg MIN PER CONTACT
- 3.THE INSERTION FORCE IS 0.12kg MAX.PER CONTACT AND THE WITHDRAWAL FORCE IS 0.02 kg MIN PER CONTACT BASED ON THE 0.40±0.01mm THICKNESS PIN GAUGE

△ PRODUCT NO. MATRIX: S500 - NN-N-NNN

CODE:

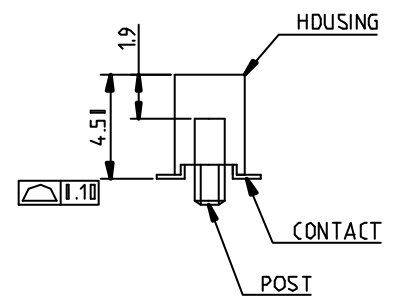
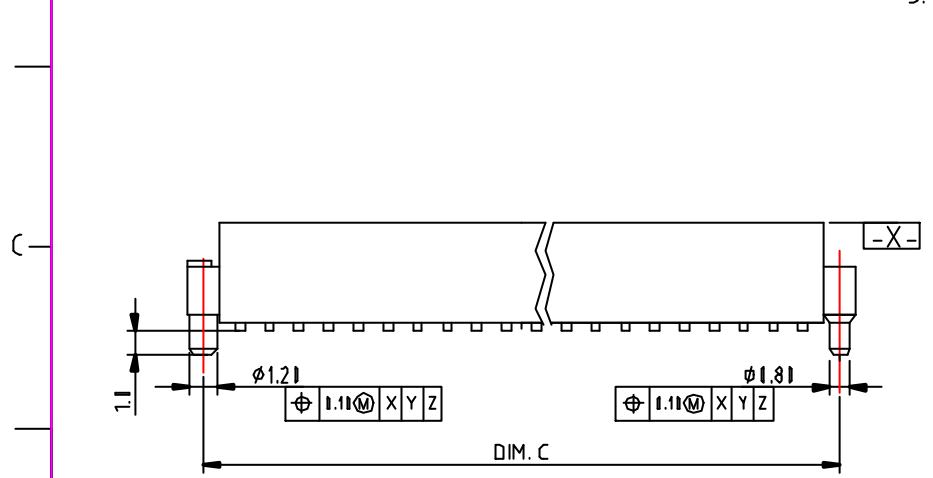
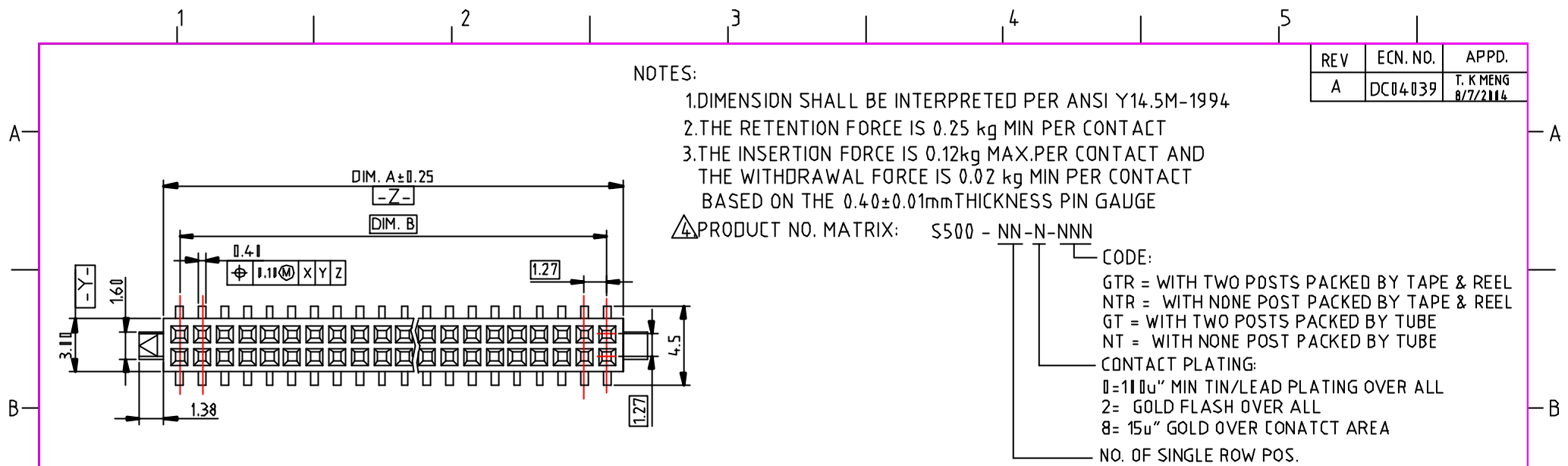
- GTR = WITH TWO POSTS PACKED BY TAPE & REEL
- NTR = WITH NONE POST PACKED BY TAPE & REEL
- GT = WITH TWO POSTS PACKED BY TUBE
- NT = WITH NONE POST PACKED BY TUBE

CONTACT PLATING:

- 0= 11μ" MIN TIN/LEAD PLATING OVER ALL
- 2= GOLD FLASH OVER ALL
- 8= 15μ" GOLD OVER CONTACT AREA

NO. OF SINGLE ROW POS.

5. OPERATION TEMPERATURE : -40°C - 105°C



PART NO.	NO OF POS.	DIM.A	DIM.B	DIM.C
S500-50-x-xxx	50/100	64.00	62.23	65.28
S500-45-x-xxx	45/90	57.65	55.88	58.93
S500-40-x-xxx	40/80	51.30	49.53	52.58
S500-35-x-xxx	35/70	44.95	43.18	46.23
S500-34-x-xxx	34/68	43.68	41.91	44.96
S500-30-x-xxx	30/60	38.60	36.83	39.88
S500-25-x-xxx	25/50	32.25	30.48	33.53
S500-22-x-xxx	22/44	28.44	26.67	29.72
S500-20-x-xxx	20/40	25.90	24.13	27.18
S500-15-x-xxx	15/30	19.55	17.78	20.83
S500-14-x-xxx	14/28	18.28	16.51	19.56
S500-12-x-xxx	12/24	15.74	13.97	17.02
S500-11-x-xxx	10/20	13.20	11.43	14.48
S500-08-x-xxx	8/16	11.66	8.89	11.94
S500-05-x-xxx	5/10	6.85	5.08	8.13

X.±	.X± 0.25	.XX± 0.21	NAME-INTENDED USE-> SOCKET, SMT TYPE 1.27mmx1.27mm PITCH	CTL CHARTER INCORPORATION
X°±	.X°±	.XX°±		
UNITS:	mm	DATE: 8/1/2004	PART NO.-INTENDED USE-> S500 SERIES	TITLE: CUSTOMER DRAWING
MAT'L			APPD: T.K MENG	DWG NO. 011-0002-277
			CHKD: GUOCHAO YAN	SCALE SHEET REV N/A 1/1 A
			DR: TANG HAI QING	