

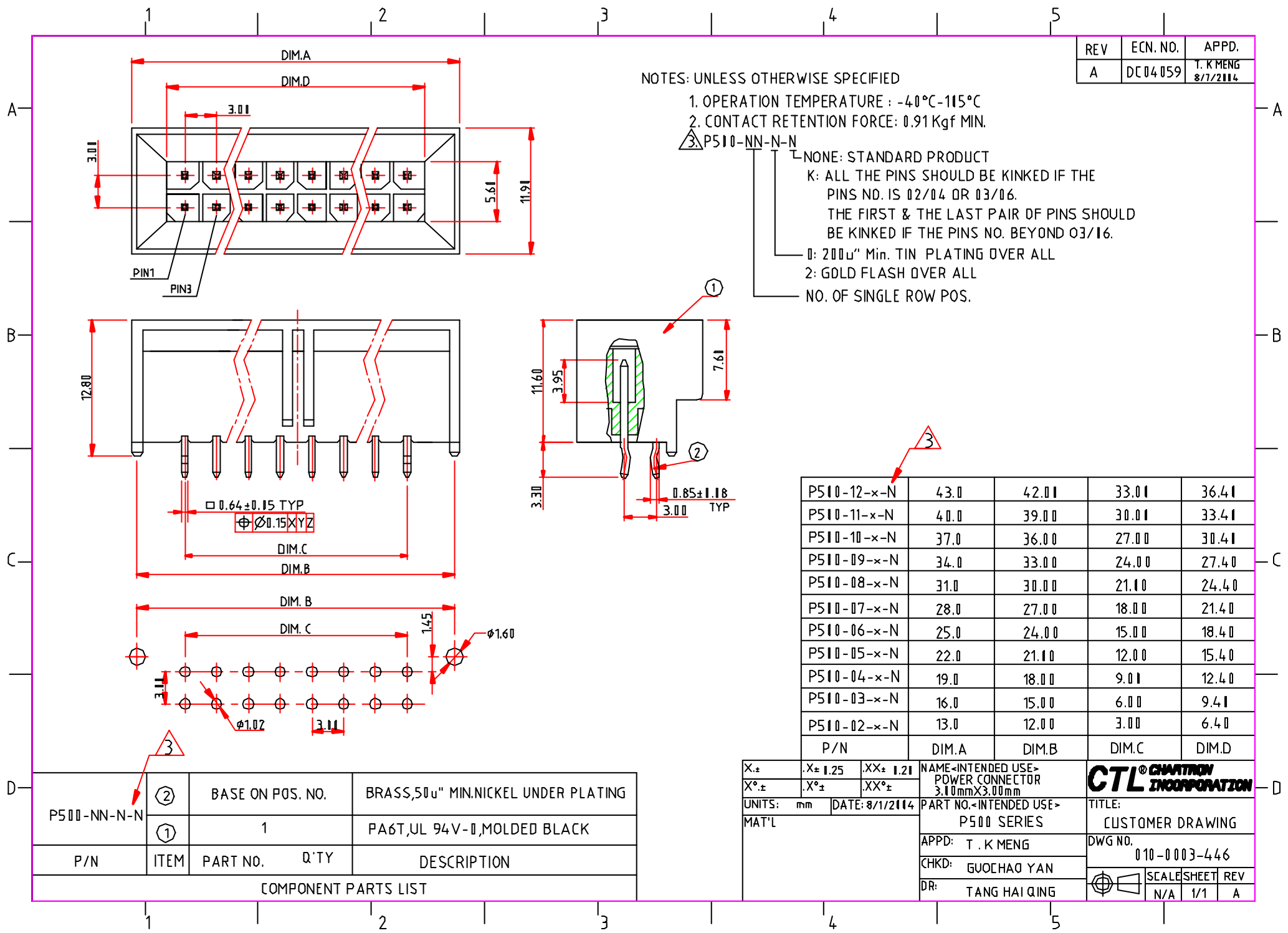
REV	ECN. NO.	APPD.
A	DC04059	T. KMENG 8/1/2014

NOTES: UNLESS OTHERWISE SPECIFIED

- OPERATION TEMPERATURE : -40°C-115°C
- CONTACT RETENTION FORCE: 0.91 Kgf MIN.

③ P510-NN-N-N

- NONE: STANDARD PRODUCT
- K: ALL THE PINS SHOULD BE KINKED IF THE PINS NO. IS 02/04 OR 03/06. THE FIRST & THE LAST PAIR OF PINS SHOULD BE KINKED IF THE PINS NO. BEYOND 03/16.
- ①: 200u" Min. TIN PLATING OVER ALL
- 2: GOLD FLASH OVER ALL
- NO. OF SINGLE ROW POS.



P510-12-x-N	43.0	42.00	33.00	36.40
P510-11-x-N	40.0	39.00	30.00	33.40
P510-10-x-N	37.0	36.00	27.00	30.40
P510-09-x-N	34.0	33.00	24.00	27.40
P510-08-x-N	31.0	30.00	21.00	24.40
P510-07-x-N	28.0	27.00	18.00	21.40
P510-06-x-N	25.0	24.00	15.00	18.40
P510-05-x-N	22.0	21.00	12.00	15.40
P510-04-x-N	19.0	18.00	9.00	12.40
P510-03-x-N	16.0	15.00	6.00	9.40
P510-02-x-N	13.0	12.00	3.00	6.40
P/N	DIM.A	DIM.B	DIM.C	DIM.D

P/N	ITEM	PART NO.	Q'TY	DESCRIPTION
P510-NN-N-N	②	BASE ON POS. NO.		BRASS,50u" MIN.NICKEL UNDER PLATING
	①	1		PA6T,UL 94V-0,MOLDED BLACK

COMPONENT PARTS LIST

X.±	.X± 1.25	.XX± 1.21	NAME-INTENDED USE-> POWER CONNECTOR 3.10mmX3.00mm	<b>CTL</b> CHATRON INCORPORATION
X°±	.X°±	.XX°±		
UNITS:	mm	DATE: 8/1/2014	PART NO.-INTENDED USE-> P500 SERIES	TITLE: CUSTOMER DRAWING
MAT'L			APPD: T. K MENG	DWG NO. 010-0003-446
			CHKD: GUOCHAO YAN	SCALE SHEET REV N/A 1/1 A
			DR: TANG HAI QING	