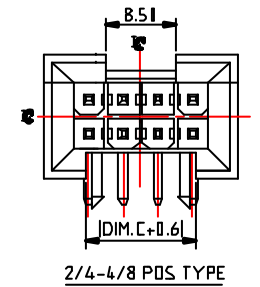
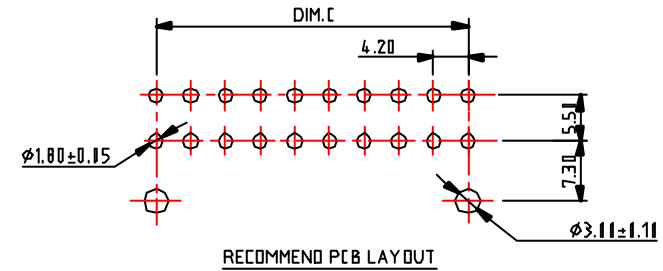
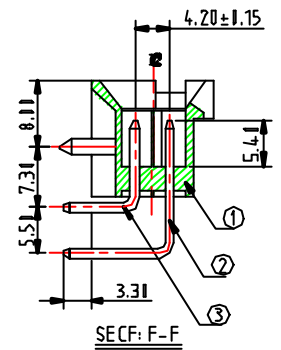
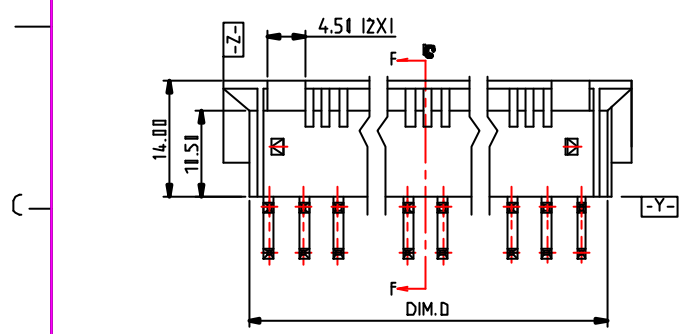
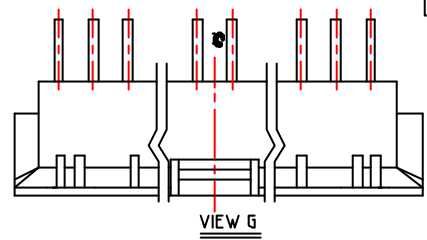
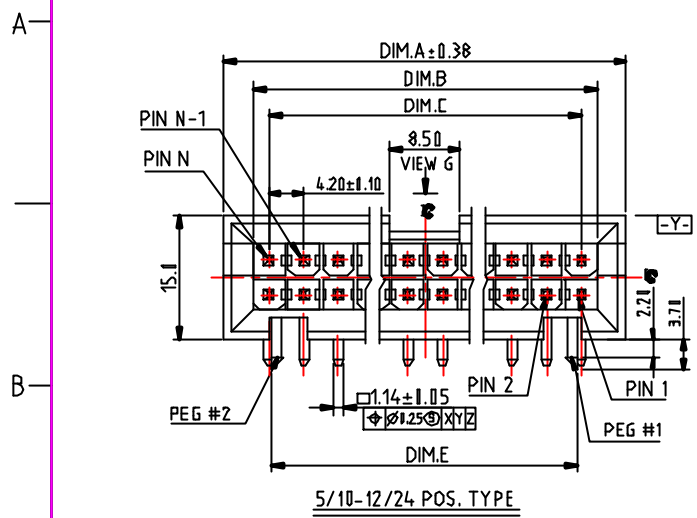


REV	ECN. NO.	APPD.
A	DC 04 046	T. KMENG 8/7/2004

NOTE:
 1. OPERATION TEMPERATURE : -40°C-115°C
 2. DIMENSIONS SHALL BE INTERPRETED PER ANSI Y14.5M-1994
 3. CONTACT RETENTION FORCE : 1.36 kgf MIN. PER CONTACT.

△ PROD. NO. P210-NN-N-NN
 G2: WITH PEG#1 & PEG #2
 CONTACT PLATING
 0=110u" MIN. TIL/LEAD PLATING OVER ALL
 2=GOLD FLASH OVER ALL
 8=15u" MIN. GOLD
 NO. OF SINGLE ROW POS.



PART NO.	ND OF POS.	DIM.A	DIM.B	DIM.C	DIM.D	DIM.E
P210-12-x-□	12/24	57.08	50.01	46.20	51.2	45.40
P210-11-x-□	11/22	52.88	45.80	42.00	47.0	41.20
P210-10-x-□	10/20	48.68	41.60	37.80	42.8	37.00
P210-09-x-□	9/18	44.48	37.40	33.61	38.6	32.80
P210-08-x-□	8/16	41.28	33.20	29.40	34.4	28.60
P210-07-x-□	7/14	36.18	29.01	25.21	31.2	24.40
P210-06-x-□	6/12	31.88	24.80	21.00	26.1	20.21
P210-05-x-□	5/10	27.68	20.61	16.80	21.8	16.00
P210-04-x-□	4/8	23.48	16.40	12.60	17.6	11.80
P210-03-x-□	3/6	19.28	12.20	8.40	13.4	7.61
P210-02-x-□	2/4	15.08	8.00	4.20	9.2	3.41

③	BASE ON SINGLE ROW POSITION	CONTACT, BRASS, 50u" MIN. NICKEL UNDER PLATING
②	BASE ON SINGLE ROW POSITION	CONTACT, BRASS, 50u" MIN. NICKEL UNDER PLATING
①	1	HOUSING, NYLON 6.6 UL94V-0, COLOR WHITE
ITEM	Q' TY	DESCRIPTION

X.±	.X± 1.38	.XX± 0.25	NAME-INTENDED USE-> POWER CONN	CTL CHATRON INCORPORATION
X°.±	.X°.±	.XX°.±		
UNITS:	mm	DATE: 8/1/2004	PART NO.-INTENDED USE-> P210 SERIES	TITLE: CUSTOMER DRAWING
MAT'L			APPD: T.K MENG	DWG NO. 010-0012-439
			CHKD: GUOCHAO YAN	SCALE SHEET REV N/A 1/1 A
			DR: TANG HAI QING	