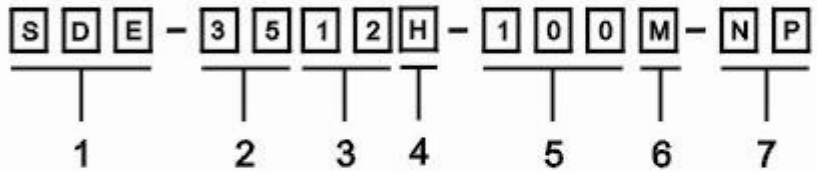




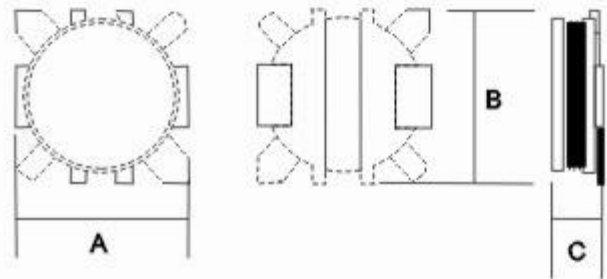
SMD POWER INDUCTORS SDE TYPE

PRODUCT IDENTIFICATION



1. PRODUCT SYMBOL
2. OUTSIDE DIA : mm
3. BODY HEIGHT : mm
4. HIGH CURRENT
5. INDUCTANCE : μH
6. TOLERANCE : K \pm 10% , L \pm 15% , M \pm 20%
7. Meet ROHS Regulations of Prohibited 6 Poisonous Materials

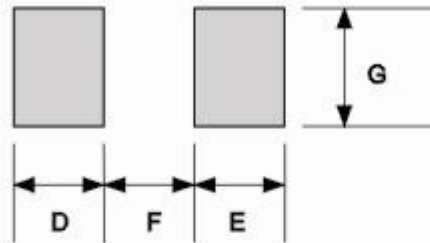
SHAPES & DIMENSION FOR SDE SERIES (mm)



FEATURE

- Miniature size
- Available on tape and reel for automatic insertion
- Lead free part available

RECOMMENDED PATTERN (mm)



PART NO.	A	B	C	D,E	F	G
SDE 2610	2.80 \pm 0.2	2.60 \pm 0.2	1.00max.	1.20	1.0	1.0
SDE 2810H	3.00 \pm 0.2	3.00 \pm 0.2	1.00max.	1.20	1.0	1.0
SDE 3014	3.20 \pm 0.3	3.20 \pm 0.3	1.40max.	1.20	1.40	1.40
SDE 3512	3.70 \pm 0.3	3.70 \pm 0.3	1.20max.	1.45	1.00	1.20
SDE 3515	3.70 \pm 0.3	3.70 \pm 0.3	1.50max.	1.45	1.00	1.20
SDE 3518	3.70 \pm 0.3	3.70 \pm 0.3	1.80max.	1.45	1.00	1.20
SDE 5410	5.60 \pm 0.3	5.60 \pm 0.3	1.05max.	1.75	2.50	2.50
SDE 5412	5.60 \pm 0.3	5.60 \pm 0.3	1.20max.	1.75	2.50	2.50
SDE 5419	5.60 \pm 0.3	5.60 \pm 0.3	1.90max.	1.75	2.50	2.50
SDE 7012	7.20 \pm 0.3	7.20 \pm 0.3	1.20max.	2.25	3.50	3.00
SDE 7015	7.20 \pm 0.3	7.20 \pm 0.3	1.50max.	2.25	3.50	3.00
SDE 7018	7.20 \pm 0.3	7.20 \pm 0.3	1.80max.	2.25	3.50	3.00
SDE 7020	7.20 \pm 0.3	7.20 \pm 0.3	2.00max.	2.25	3.50	3.00

SMD POWER INDUCTORS

SDE TYPE



ELECTRICAL SPECIFICATION

L(μ H)	RDC(OHM) \pm 20%		IDC(A)Max.	
	SDE 2610	SDE 2810H	SDE 2610	SDE 2810H
1.0	0.092	0.061	1.40	1.15
1.5		0.074		1.00
2.2	0.179	0.110	1.00	0.80
3.3	0.219	0.210	0.85	0.65
4.7	0.282	0.240	0.70	0.53
6.8	0.453	0.290	0.61	0.45
10	0.667	0.480	0.45	0.39
15	0.857	0.710	0.40	0.32
22	1.511	1.200	0.33	0.27

L(μ H)	RDC(OHM) \pm 20%				IDC(A)Max.			
	SDE 3014	SDE 3512	SDE 3515	SDE 3518	SDE 3014	SDE 3512	SDE 3515	SDE 3518
1.0	0.088			0.029	2.10			2.80
1.5	0.120				2.00			
2.2	0.153	0.095	0.072	0.052	1.60	1.00	1.90	1.95
3.3	0.193	0.141	0.098	0.078	1.40	0.90	1.70	1.53
4.7	0.290	0.198	0.148	0.105	1.20	0.80	1.40	1.40
5.6		0.221				0.78		
6.8	0.356	0.261	0.202	0.156	0.92	0.70	1.20	1.13
8.2	0.495				0.90			
10	0.547	0.378	0.286	0.241	0.80	0.55	0.90	0.90
15	0.696	0.596	0.419	0.335	0.68	0.50	0.70	0.75
22	0.942	0.749	0.622	0.450	0.56	0.40	0.60	0.65
33	1.264		0.980	0.740	0.51		0.50	0.50
47		1.763	1.456	0.941		0.20	0.40	0.38
100	4.042				0.28			
220			6.252	4.435			0.21	0.16



SMD POWER INDUCTORS SDE TYPE

ELECTRICAL SPECIFICATION

L(μH)	RDC(OHM) ± 20%			IDC(A)Max.		
	SDE 5410	SDE 5412	SDE 5419	SDE 5410	SDE 5412	SDE 5419
2.2		0.072	0.043		1.40	3.70
3.3	0.125	0.086	0.057	1.30	1.18	2.90
4.7	0.163	0.119	0.076	1.10	0.90	2.70
6.8	0.229	0.166	0.113	0.90	0.73	2.20
8.2			0.132			1.90
10	0.337	0.230	0.153	0.80	0.62	1.50
15	0.489	0.340	0.231	0.65	0.50	1.40
22	0.734	0.459	0.312	0.52	0.41	1.15
33	1.055	0.640	0.478	0.42	0.39	0.97
47	1.506	0.899	0.703	0.36	0.32	0.81

L(μH)	RDC(OHM) ± 20%				IDC(A)Max.			
	SDE 7012	SDE 7015	SDE 7018	SDE 7020	SDE 7012	SDE 7015	SDE 7018	SDE 7020
2.2		0.042		0.042		2.50		4.60
3.3		0.051		0.058		2.00		4.00
4.7	0.130	0.071	0.058	0.080	1.42	1.80	2.50	3.50
6.8	0.189	0.121	0.084	0.100	1.11	1.40	2.00	2.70
10	0.202	0.163	0.124	0.155	0.95	1.20	1.70	2.00
15	0.343	0.221	0.189	0.212	0.75	0.95	1.30	1.50
22	0.488	0.304	0.272	0.255	0.60	0.75	1.15	1.30
27			0.322				1.05	
33	0.711	0.484	0.385	0.417	0.50	0.62	0.95	1.20
39			0.476				0.87	
47	0.872	0.619		0.577	0.45	0.50		1.00

Operating Temperature : -40°C~ +85°C
 Test Freq. : 100KHz/0.1V
 Inductance drop ≤ 10% Typ. At IDC